

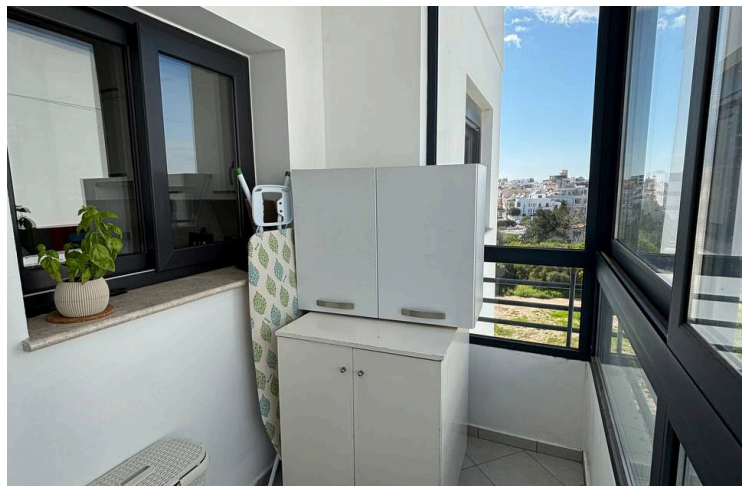
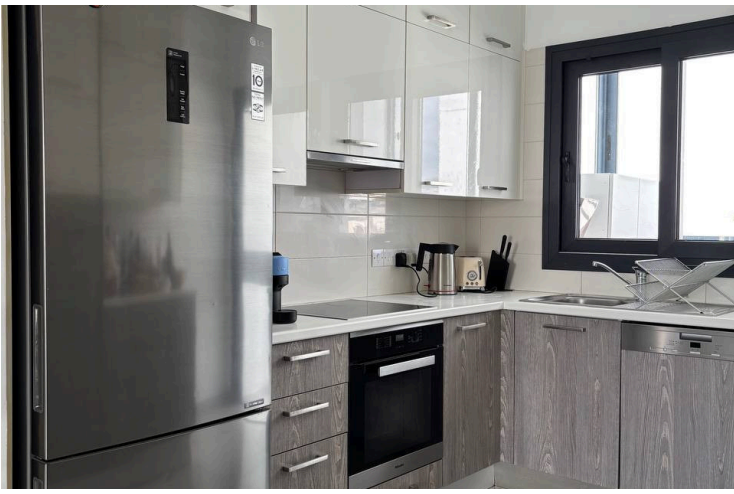
8185322

MODERN DESIGN 2 BEDROOM FULLY FURNISHED APARTMENT WITH COMMON POOL IN MESA GEITONIA

 Mesa Geitonia, Limassol

€1,800 /month





Overview

Specifications

Bedrooms

 2

Bathrooms

 2

Covered

 76 m²

Type **Apartment**

Toilets **2**

Covered veranda **16 m²**

Furnished **Fully furnished**

Structure **Concrete**

Energy efficiency rating  **A+**

Description

Discover modern, comfortable living in this beautifully presented 2-bedroom, 2-bathroom apartment located in the sought-after area of Mesa Geitonia, just moments from Jumbo Linopetra.

This immaculate property is in excellent condition throughout and has been thoughtfully furnished with brand-new furniture and fitted with high-quality electrical appliances, ensuring a move-in-ready experience from day one.

The apartment boasts two generous verandas — one of which is elegantly enclosed with glass walls, offering a versatile space perfect for relaxing year-round regardless of the weather. Additional highlights include a private underground parking space, with the added convenience of a large open area directly opposite the building for extra parking.

Residents will also enjoy access to an array of premium shared amenities, including a sparkling communal swimming pool, a private park exclusively for block residents, and a dedicated private storage room.

Whether you're looking for a peaceful retreat or a vibrant home close to everything you need, this apartment truly has it all.

*Key Features:**

- 2 Bedrooms | 2 Bathrooms
- New furniture & quality appliances
- Two verandas (one glass-enclosed)
- Underground parking + extra parking opposite
- Communal swimming pool
- Private residents' park



Additional information

Facilities

Aircondition, Split system

Gated complex

Solar water heater

Childrens playground

Parking, Underground

Storage

Elevator

Pool, Communal

Features

Balcony, back

CCTV

Combined kitchen and dining area

Easy access to highway

Energy efficient doors/windows

Internet

Modern design

Near bus route

Pipe-in-pipe plumbing system

Thermal insulation

Balcony, front

Central TV system

Connected to electric mains

Easy access to main roads

Fitted wardrobes

Kitchen appliances

Municipal water/sewage

Open plan

Pressurized water system

Veranda, back

Bright

Ceramic tiles

Double glazing

En suite bathroom

Garbage disposal

Luxury specifications

Near amenities

Openings in opposite sides

Sound insulation

Veranda, front

Distances

Amenities

 2 km

Airport

 65 km

Sea

 4 km

Public transport

 200 m


Schools

 100 m

Contact us



Sofia Geralis

 (+357) 99408353

 sgerali@vivorealty.com.cy

