

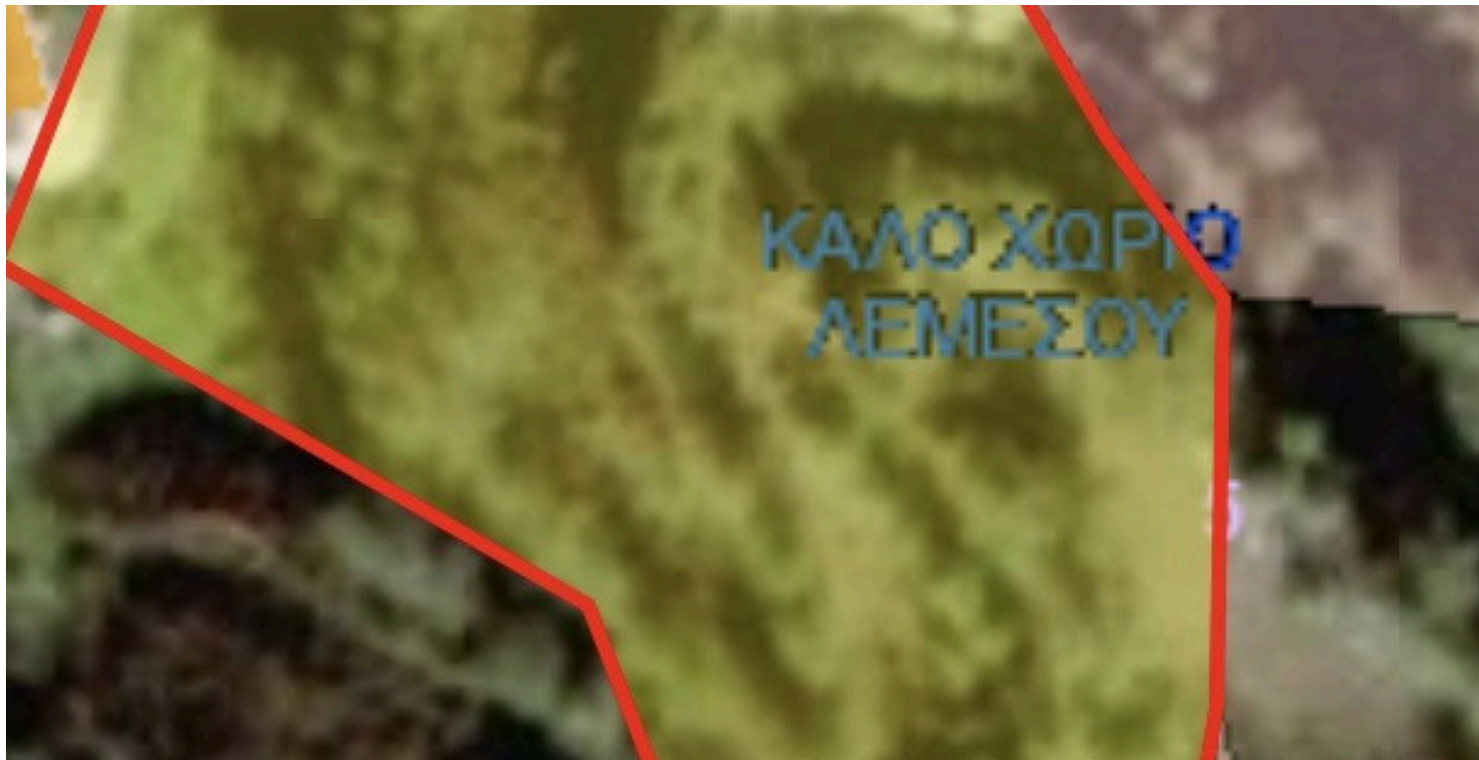
8184993

RESIDENTIAL LAND OF 5273 M2 IN KALO CHORIO LEMESOU

 Kalo Chorio, Limassol

€300,000 +VAT





Overview

Specifications

Area

 5273 m²

Type

Development Land

Title deed

Yes

Description

Discover an exceptional opportunity to build your dream home in the charming village of Kalo Chorio, Limassol. This generous 5,273 m² plot offers the perfect canvas for creating a luxurious Mediterranean residence in one of Cyprus's most sought-after locations.

Property Highlights:

Plot Size: 5,273 m²

Building Density: 40%

Coverage: 25%

Floors: 2 levels

Maximum Height: 8.3 meters

Development Potential:

This expansive plot allows for the construction of a substantial two-story residence with over 2,000 m² of total building space. The generous land area provides ample room for landscaped gardens, outdoor living spaces, a private pool, and parking, while maintaining privacy and tranquility.

Location:

Nestled in the peaceful village of Kalo Chorio, this property offers the perfect blend of rural serenity and urban convenience. Enjoy authentic Cypriot village life while remaining just 30 minutes from Limassol's amenities, beaches, international schools, and highway connections.

Ideal For:

This exceptional plot is perfect for discerning buyers seeking to create a bespoke family villa or a luxury estate 30 minutes from Limassol.



Additional information

Features

Quiet area

Village view

Planning zones

Zone	Cover factor	Build factor	Max height	Max floors	Affected percentage
H4	25%	40%	8.3 m	2	100%

Contact us



Sofia Geralis

 (+357) 99408353

 sgerali@vivorealty.com.cy

