

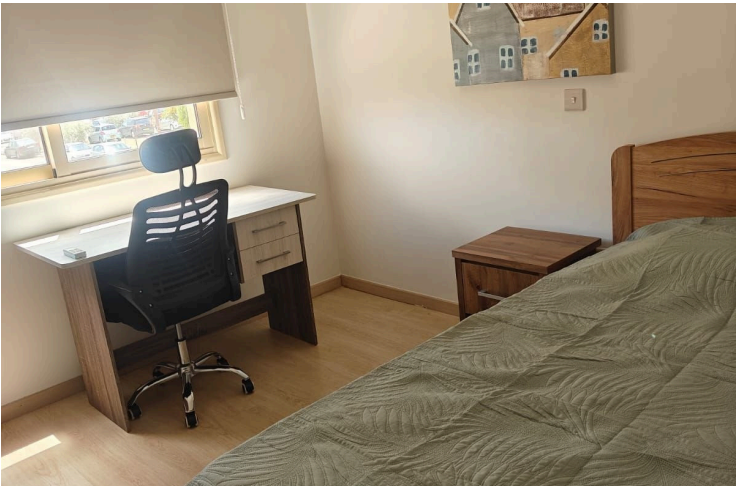
8182199

LOVELY 3 BEDROOM APARTMENT FULLY FURNISHED IN PETROU & PAVLOU

 Petrou & Pavlou, Limassol

€1,800 /month ~~€1,900~~





Overview

Specifications

Bedrooms

 3


Bathrooms

 1

Covered

 105 m²

Type	Apartment
Showers	1
Toilets	2
Status	Key ready
Year of construction	2012

Furnished	Fully furnished
Structure	Concrete
Facade	Concrete
Energy efficiency rating	 A

Description

Discover this exquisite, contemporary apartment offering immediate occupancy with brand-new furnishings throughout. Positioned on the first floor in the highly sought-after Petrou & Pavlou area, this residence provides seamless access to essential amenities and quality schools.

The thoughtfully designed interior features three generously proportioned bedrooms, including a master suite with private shower. The stylish full bathroom complements the living space, while the separate kitchen comes fully equipped with premium new appliances. The open-concept lounge and dining area create an inviting social hub for entertaining and daily living.

Outdoor enjoyment comes naturally with two expansive verandas—one covered, one open to the sun—plus an additional intimate covered terrace adjoining the kitchen. Modern comforts abound with luxurious underfloor heating, convenient storage solutions, and secure covered parking completing this exceptional ready-to-move-in property.

The monthly rent includes the common expenses.

2 months deposit required by the owner.



Additional information

Facilities

Aircondition, Split system

Parking, Covered

Elevator

Solar water heater

Heating, Underfloor

Storage

Features

Balcony, front

Central TV system

Double glazing

En suite shower

Granite countertops

Municipal water/sewage

Pressurized water system

Veranda

Bright

Ceramic tiles

Easy access to highway

Fitted wardrobes

Heart of city center

Near amenities

Shower

Veranda, front

CCTV

Connected to electric mains

Easy access to main roads

Garbage disposal

Kitchen appliances

Near bus route

Sound insulation

Veranda, large

Distances

Amenities

 200 m

Airport

 65 km

Sea

 5 km

Public transport

 200 m


Schools

 200 m

Contact us



Sofia Geralis

 (+357) 99408353

 sgerali@vivorealty.com.cy

