

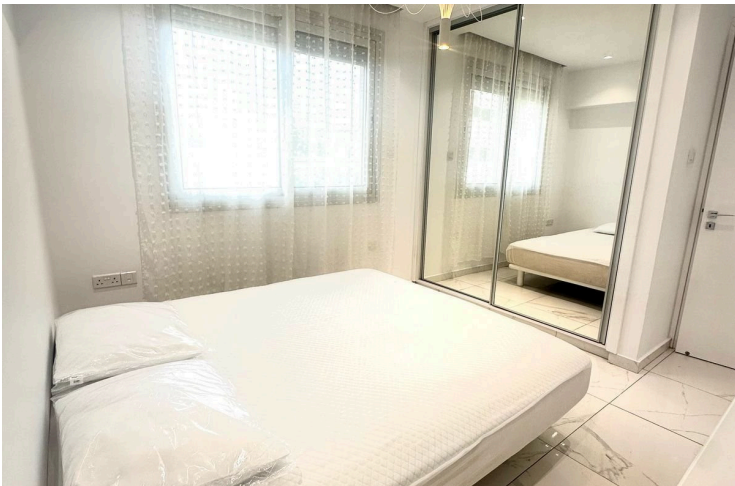
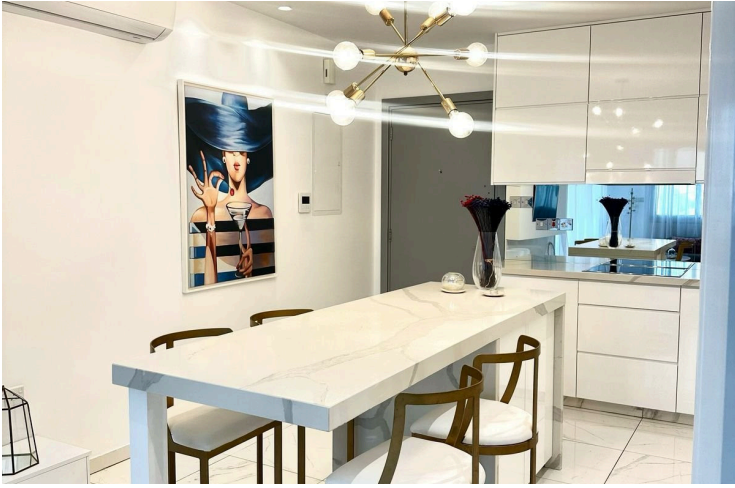
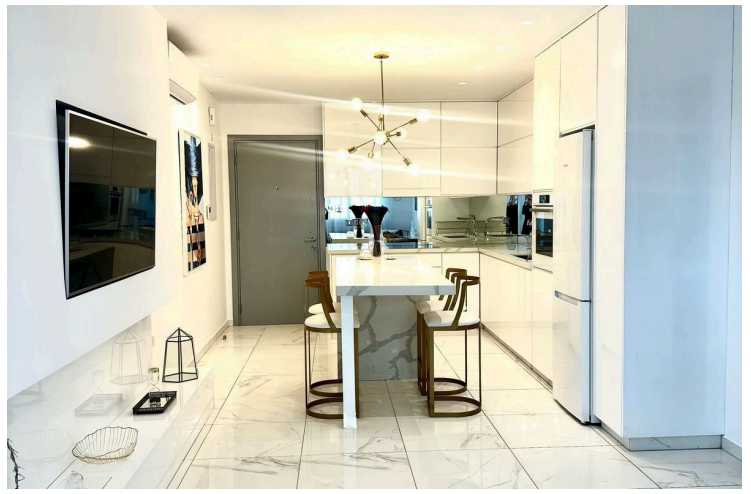
8182100

# LUXURY 2 BEDROOM FULLY FURNISHED APARTMENT IN NEA EKALI

 Ekali, Limassol

**€1,850** /month ~~€1,900~~





# Overview

## Specifications


Bedrooms

 2

Covered

 72 m<sup>2</sup>

Type	<b>Apartment</b>
Showers	<b>1</b>
Toilets	<b>1</b>
Status	<b>Key ready</b>
Year of construction	<b>2020</b>

Furnished	<b>Fully furnished</b>
Structure	<b>Concrete</b>
Facade	<b>Concrete</b>
Communal charge frequency	<b>Monthly</b>
Energy efficiency rating	 <b>B+</b>

## Description

Experience upscale living in this stunning two-bedroom apartment, nestled on a picturesque hill in Nea Ekali, near the Arxi Adeiwn (Driving Licensing Authority) and adjacent to the beautiful Polemidia National Park (1 minute walk). Enjoy breathtaking views of Limassol Bay and the vibrant city!

Key features include:

- Second-floor location in a charming three-story building with friendly neighbors
- Spacious 72 sqm interior with an additional 17 sqm covered balcony, perfect for relaxation
- Open-plan design blending a stylish kitchen, cozy living area and veranda
- Fully furnished with elegant custom furniture, marble finishes, and top-of-the-line Bosch electric appliances, including a Sony smart TV
- Two private parking spaces (1 covered and the other one semi-covered), solar panel system, and electric water heating
- Air conditioning, heating, and electric shutters
- Dogs are welcome!

Located in the desirable Nea Ekali area, this property enjoys easy access to the north side of the Limassol motorway, placing you just a 10-minute drive from the city center, Marina, Old Town, and Port. Everything you need is within reach, including public and private schools (such as The Island, Pascal, Heritage, and Grammar School), bakeries, pharmacies, supermarkets, cafes, restaurants, parks, gyms, and public transportation.

The rent includes common expenses.  
2 Deposits are required by the owner.



# Additional information

## Facilities

Aircondition, Split system

Elevator

Parking, Covered

Solar water heater

Storage

## Features

Balcony, front

Bright

CCTV

City view

Combined kitchen and dining area

Connected to electric mains

Double glazing

Easy access to main roads

Fitted wardrobes

Internet

Kitchen appliances

Kitchen island

Luxury specifications

Marble flooring

Modern design

Municipal water/sewage

Open plan

Panoramic view

Pets allowed

Pipe-in-pipe plumbing system

Pressurized water system

Quiet area

Sea view

Shower

Veranda, front

Veranda, large

## Distances

Amenities



1 km

Airport



68 km

Sea



6 km

Public transport



1 km

Schools




1 km

## Contact us



**Sofia Geralis**

 (+357) 99408353

 sgerali@vivorealty.com.cy

