

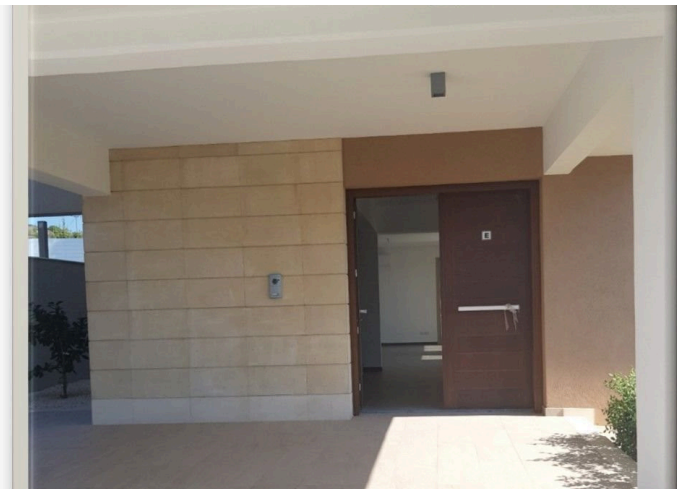
8181834

NEW 4BEDROOM VILLA WITH SWIMMING POOL CLOSE TO PARKLANE HOTEL IN LIMASSOL

 Pyrgos Tourist Area, Limassol

€1,090,000





Overview

Specifications

Bedrooms

 4


Bathrooms

 1

Covered

 203 m²

Type	Detached Villa
Showers	1
Toilets	3
Plot	350 m²
Status	Key ready

Year of construction	2018
Title deed	Yes
Furnished	Unfurnished
Structure	Concrete
Energy efficiency rating	 A

Description

Experience refined living in this exceptional 4-bedroom villa, perfectly positioned between the prestigious Parklane Hotel and St Raphael Resort. This exclusive property offers the perfect blend of privacy and convenience in a gated community of just 4 villas.

? KEY HIGHLIGHTS:

- Title deed ready
- Panoramic sea views
- High-tech €300,000 soundproof barrier under installation
- Large private pool
- Prime location near 5-star hotels
- Comprehensive underfloor heating system
- Full air conditioning throughout

? INTERIOR FEATURES:

- 4 generously sized bedrooms
- 2 full bathrooms plus guest toilet
- Expansive open-plan kitchen and living areas
- Built-in wardrobes throughout
- High-quality finishes

? LOCATION BENEFITS:

- Secure gated complex



Floor plans

VILLA E

FIRST FLOOR



VILLA TYPE	E
BEDROOMS	4
PARKING	1
INTERNAL COVERED m ²	203
COVERED VERANDA M ²	43.5
TOTAL COVERED m ²	246.5
UNCOVERED VERANDA m ²	87
POOL m ²	30
PLOT SIZE m ²	350

VILLA E

GROUND FLOOR

VILLA TYPE	E
BEDROOMS	4
PARKING	1
INTERNAL COVERED m ²	203
COVERED VERANDA M ²	43.5
TOTAL COVERED m ²	246.5
UNCOVERED VERANDA m ²	87
POOL m ²	30
PLOT SIZE m ²	350



Additional information

Facilities

Aircondition, Provision

Parking, Covered

Gated complex

Pool, Private

Heating, Underfloor

Solar water heater

Features

Alarm system

Bathroom underfloor heating

Cul de sac

Easy access to main roads

Guest WC

Near bus route

Shower

Balcony

Bright

Double glazing

En suite shower

Internal stairs

Rental potential

Walking distance to beach

Bath

Connected to electric mains

Easy access to highway

Fitted wardrobes

Modern design

Sea view

Distances

Amenities

 200 m

Airport

 65 km

Sea

 200 m

Public transport

 200 m

Contact us



Sofia Geralis

 (+357) 99408353

 sgerali@vivorealty.com.cy

