



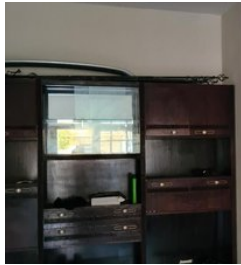
**VIVO**  
REALTY



**EXCLUSIVE CORNER PLOT OF 307 M2 IN THE  
CENTER OF TOWN**

 [Limassol, Katholiki](#)

**8181064**



<b>Price</b>	€490,000	<b>Type</b>	Building Plot
<b>Plot</b>	307 m <sup>2</sup>	<b>Area</b>	Limassol, Katholiki

---

## Description

Lovely corner plot with existing building in the center of town within walking distance to all necessary amenities, schools and the University of Limasol.

Suitable for a small block of student apartments as the density is 140%, coverage of 50% over 4 floors with height of 17 meters.



### Sofia Geralis

Property Consultant

✉ [sgerali@vivorealty.com.cy](mailto:sgerali@vivorealty.com.cy)

☎ (+357) 99408353

## Facilities

Aircondition, Split system  
Solar water heater

Parking, Uncovered

## Features

Easy access to main roads  
Municipal water/sewage  
Corner  
Veranda, front  
Near bus route

Connected to electric mains  
Balcony, front  
Mosaic tiles  
Distressed property  
Near amenities

## Distances

<b>Amenities</b>	100 m
<b>Sea</b>	2 km
<b>Schools</b>	100 m

<b>Airport</b>	65 km
<b>Public Transport</b>	100 m