

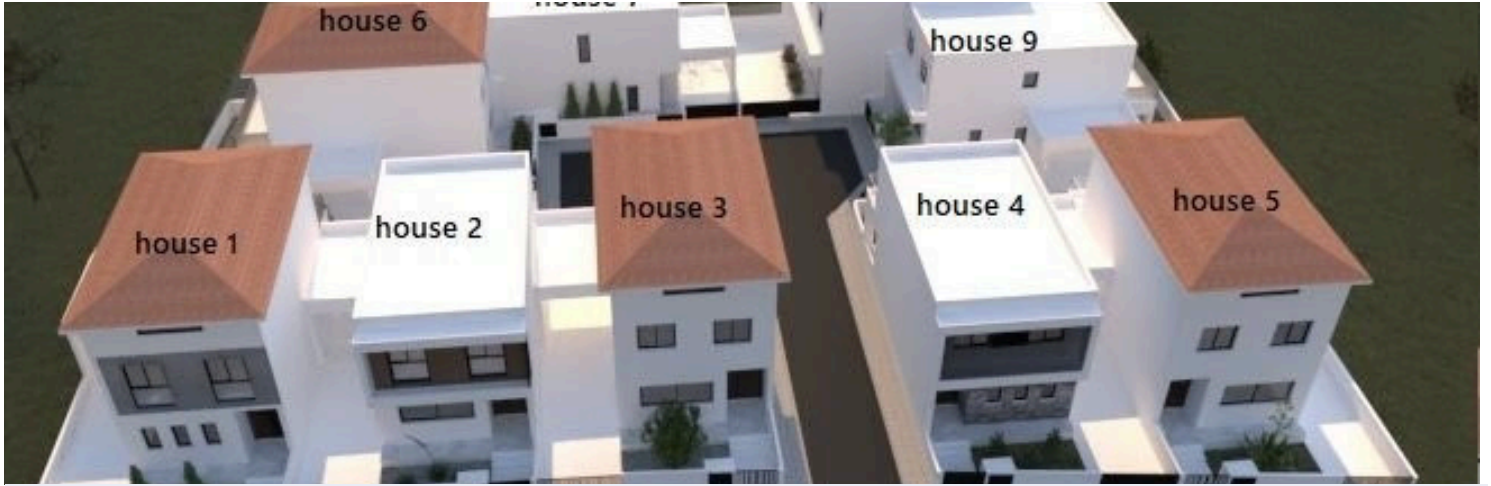
8180974

3 BEDROOM HOUSE UNDER CONSTRUCTION IN ERIMI

 Erimi, Limassol

€420,000 +VAT





Overview

Specifications

Bedrooms

 3

Bathrooms

 1

Covered

 179 m²

Type **Semi-Detached Villa**

Showers **1**

Toilets **3**

Plot **255 m²**

Status **Under construction**

Year of construction **2024**

Furnished **Unfurnished**

Structure **Concrete**

Energy efficiency rating  **A**

Description

Three bedroom house in a new stunning residential development located in Erimi, Limassol, offers a unique gated complex of 15 houses. Its prime location provides residents with easy access to the city center and major highways.

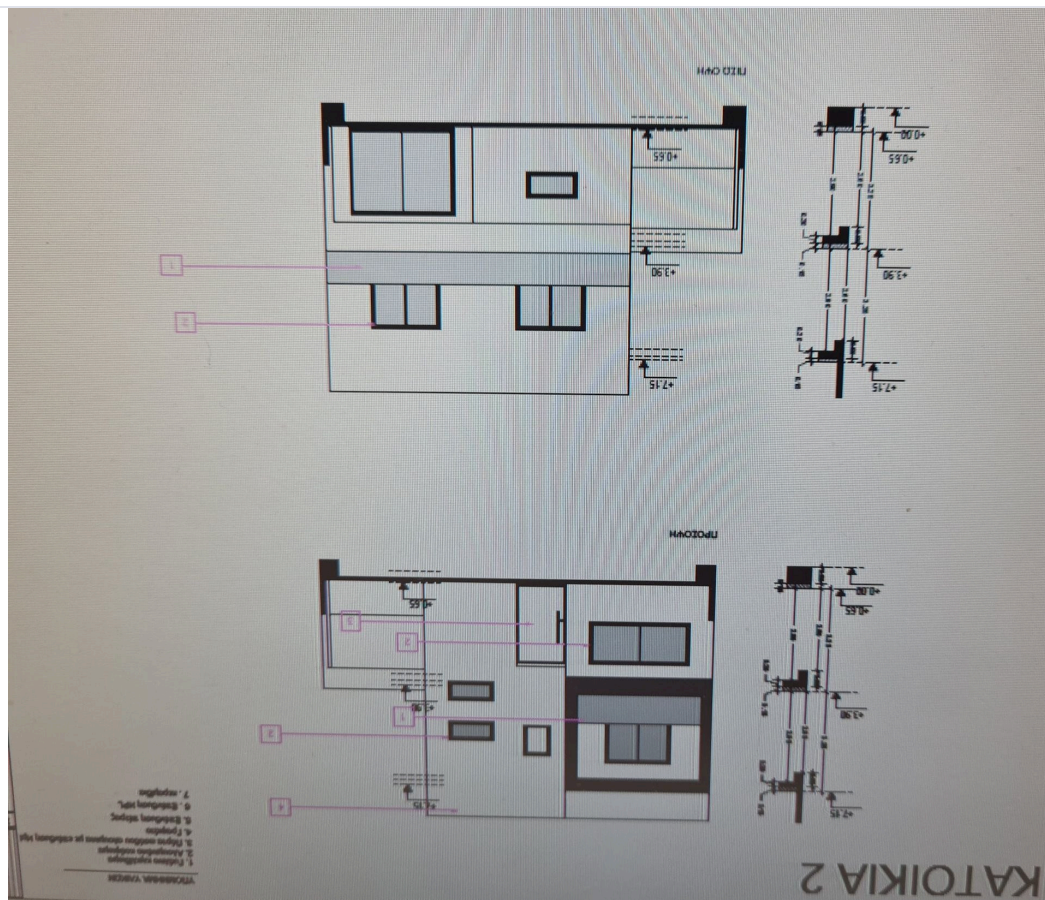
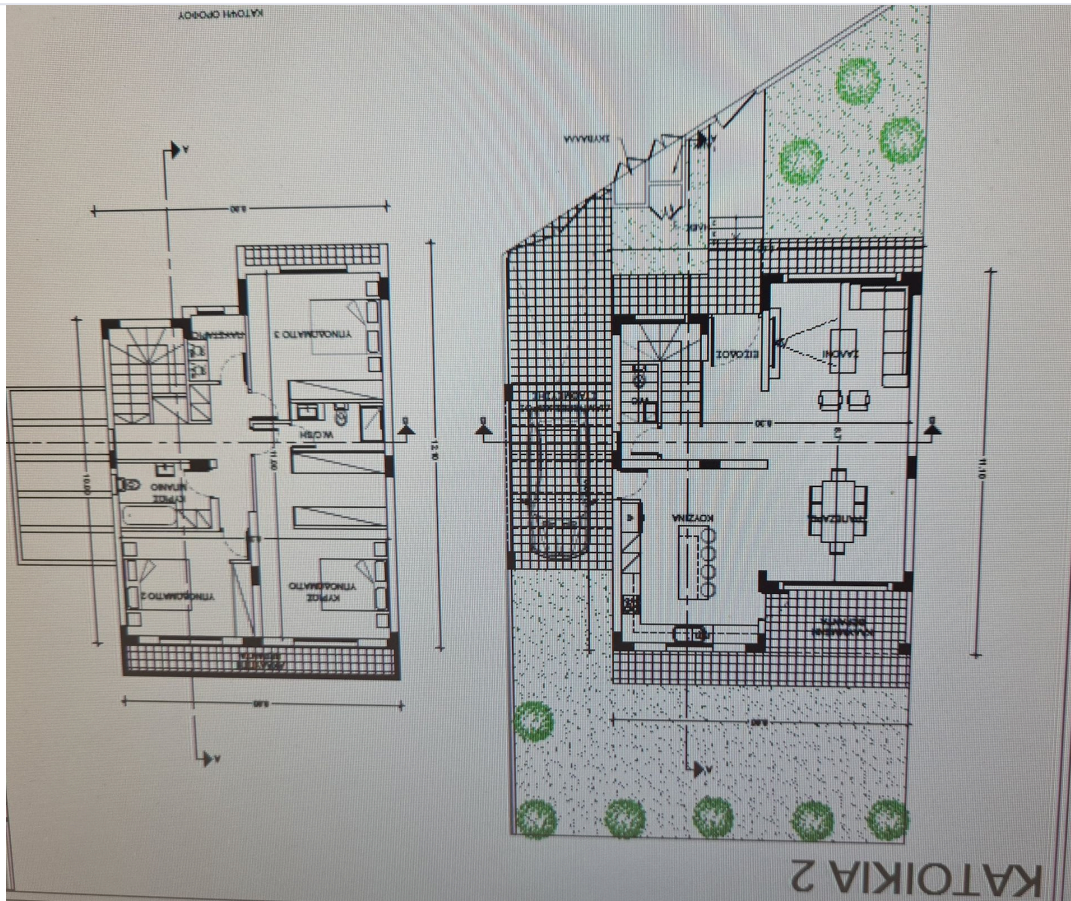
The specific complex offers fifteen houses, providing even more variety for prospective homeowners. These houses provide a more spacious and private living experience. With well-designed layouts, each house offers ample living space, ideal for families or individuals seeking a larger property. The houses feature tastefully designed interiors, ensuring a comfortable and stylish environment for residents to enjoy.

In addition to the exceptional living spaces, the complex prides itself on its thoughtful and practical common areas. Each apartment building and house complex features common areas that are designed to be both functional and practical. These spaces are a great place for residents to relax, socialize, or simply enjoy the beautifully landscaped surroundings.

Delivery 12 -15 months from signing



Floor plans



Additional information

Facilities

Aircondition, Provision

Heating, Provision

Elevator

Parking, Covered

Gated complex

Solar water heater

Features

Bright

Combined kitchen and dining area

Double glazing

Elevated

Fitted wardrobes

Granite countertops

Internet

Luxury specifications

Near amenities

Pressurized water system

Sound insulation

Tile flooring

Central sound system

Connected to electric mains

Easy access to highway

En suite shower

Garbage disposal

Guest WC

Investment opportunity

Modern design

Open plan

Quiet area

Spacious rooms

Under stairs storage

Ceramic tiles

Country view

Easy access to main roads

Entrance gate, automated

Garden

Internal stairs

Laminate flooring

Municipal water/sewage

Openings in opposite sides

Rental potential

Thermal insulation

Village view

Distances

Amenities

 200 m

Airport

 65 km

Sea

 3 km

Public transport

 500 m

Schools

 500 m

Contact us



Sofia Geralis

 (+357) 99408353

 sgerali@vivorealty.com.cy

