



VIVO
REALTY

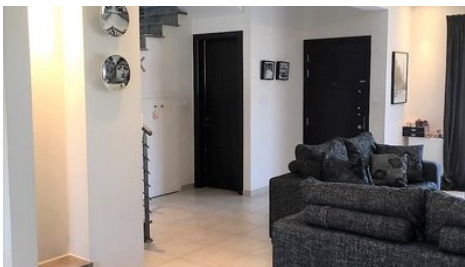
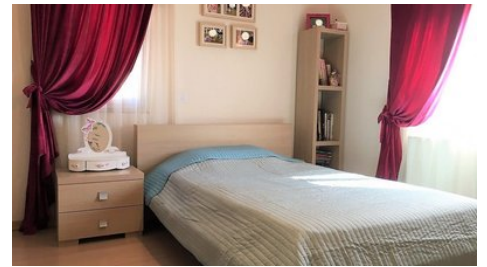


LOVELY RESALE FULLY FURNISHED 3 BEDROOM SEMI DETACHED HOUSE IN PANTHEA

 [Limassol, Panthea](#)

8180647





| | | | |
|-----------------------------|--------------------|---------------------------------|---------------------|
| Price | €490,000 | Type | Semi-Detached Villa |
| Bedrooms | 3 | Bathrooms | 1 |
| Covered | 147 m ² | Plot | 170 m ² |
| Year of Construction | 2008 | Title deed | Yes |
| Status | Resale | Energy efficiency rating | B+ |
| Area | Limassol, Panthea | | |

Description

Lovely three bedroom semi detached house in excellent condition, situated in a quite neighborhood of Panthea area with easy access to main roads and the motorway.

Total covered indoor area of 148 sq.m., built on the plot of 170 sq.m., fully furnished and equipped as seen on photos by electrical appliances AEG, A/C's, Gas heating system, covered parking for two cars, 3 WC's, 2 bathrooms.

Another advantage of the property is the permit to build one extra floor due to the increased density.



Sofia Geralis

Property Consultant

✉ sgerali@vivorealty.com.cy

☎ (+357) 99408353

Facilities

Aircondition, Split system

Parking, Covered

Solar water heater

Heating, Central

Storage

Features

Gas heaters

Central TV system

Easy access to highway

Connected to electric mains

Balcony, front

Fitted wardrobes

Pressurized water system

Bright

Double glazing

Quiet Area

En suite Shower

Near amenities

Shower

Easy access to main roads

Combined kitchen and dining area

Municipal water/sewage

Balcony

Garbage disposal

Internal stairs

Open plan

Guest WC

Rental Potential

Near bus route

Kitchen appliances

Distances

Amenities 500 m

Sea 5 km

Schools 2 km

Airport 65 km

Public Transport 500 m

