

8180512

# 2 BEDROOM MODERN APARTMENT IN KOLOSSI

 Kolossi, Limassol

**€215,000** +VAT





# Overview

## Specifications

Bedrooms

 2


Bathrooms

 1

Covered

 79 m<sup>2</sup>

Type	Apartment
Showers	1
Toilets	2
Covered veranda	13.5 m <sup>2</sup>
Roof garden	67.3 m <sup>2</sup>

Covered parking	15 m <sup>2</sup>
Status	Under construction
Furnished	Unfurnished
Structure	Concrete
Energy efficiency rating	 A

## Description

New modern and stunning residential development located in Kolossi, Limassol, offers a unique combination of five apartment buildings and nineteen houses. Its prime location provides residents with easy access to the city center and major highways.

The five apartment buildings are thoughtfully designed to offer a range of housing options. Each building boasts modern architecture, ensuring a stylish and contemporary living experience. With one to three-bedroom flats available, residents can enjoy the utmost comfort and functionality. The apartments also feature covered verandas, perfect for relaxing and taking in the beautiful surroundings. Additionally, residents will have the convenience of covered parking space, ensuring their vehicles are safe and protected.

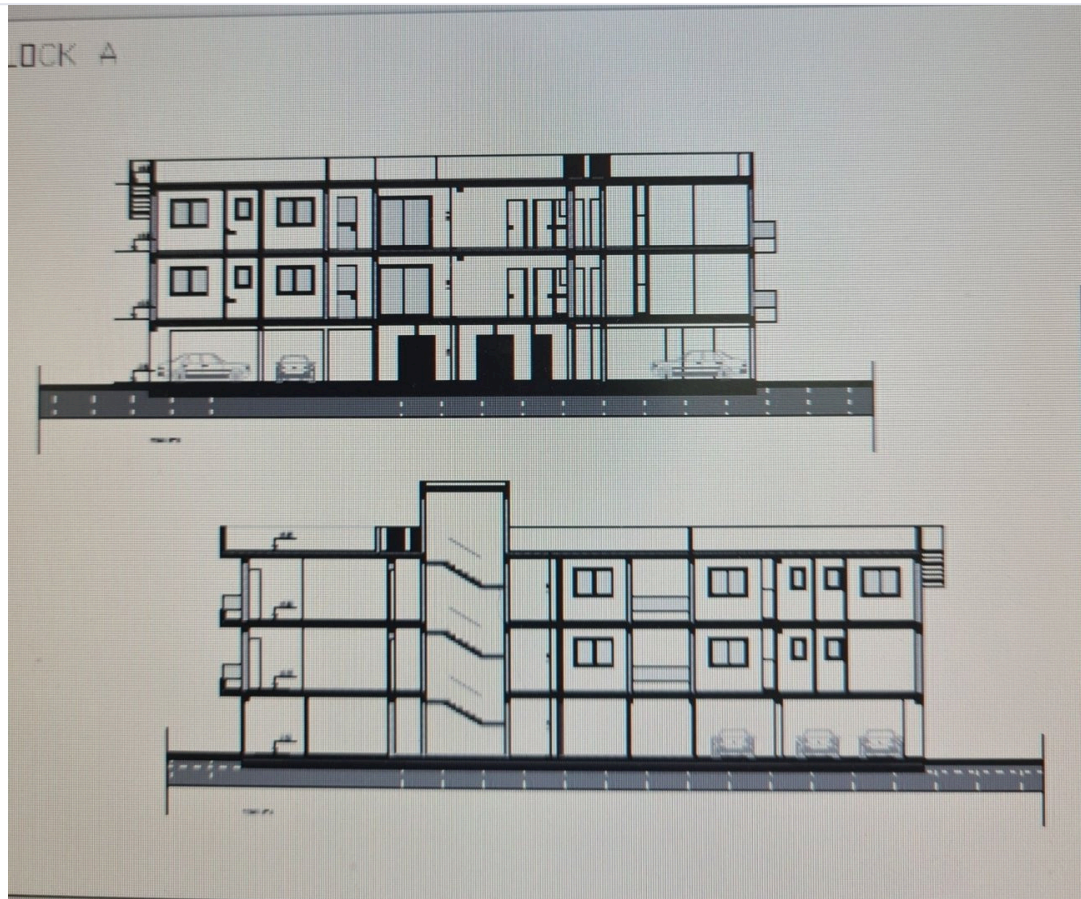
In addition to the exceptional living spaces, the project prides itself on its thoughtful and practical common areas. Each apartment building and house complex features common areas that are designed to be both functional and practical. These spaces are a great place for residents to relax, socialize, or simply enjoy the beautifully landscaped surroundings.

The project is the perfect residential development for those seeking a modern and convenient living experience in Kolossi, Limassol. With a range of options available, residents will find their perfect home within this impressive development.

Expected delivery December 2025



# Floor plans



# Additional information

## Facilities

Aircondition, Provision

Heating, Provision

Storage

Elevator

Parking, Covered

Gated complex

Solar water heater

## Features

24-hour security

Bright

Combined kitchen and dining area

Double glazing

Entrance gate, automated

Guest WC

Municipal water/sewage

Quiet area

Shower

Veranda, back

Alarm system (provision)

CCTV

Connected to electric mains

Easy access to highway

Fitted wardrobes

Internet

Open plan

Rental potential

Sound insulation

Balcony

Central TV system

Country view

Easy access to main roads

Garbage disposal

Investment opportunity

Pressurized water system

Roof garden

Tile flooring

## Distances

Amenities



1 km

Airport



68 km

Sea



4 km

Public transport



1 km

Schools



1 km

Resort




4 km

## Contact us



**Sofia Geralis**

 (+357) 99408353

 sgerali@vivorealty.com.cy