

8180170

# OFF PLAN 2 BEDROOM APARTMENT IN KATO POLEMIDIA

 Kato Polemidia, Limassol

**€220,000** +VAT





# Overview

## Specifications

Bedrooms

 2


Bathrooms

 1

Covered

 78.6 m<sup>2</sup>

Type	Apartment
Toilets	2
Status	Off plan
Year of construction	2023

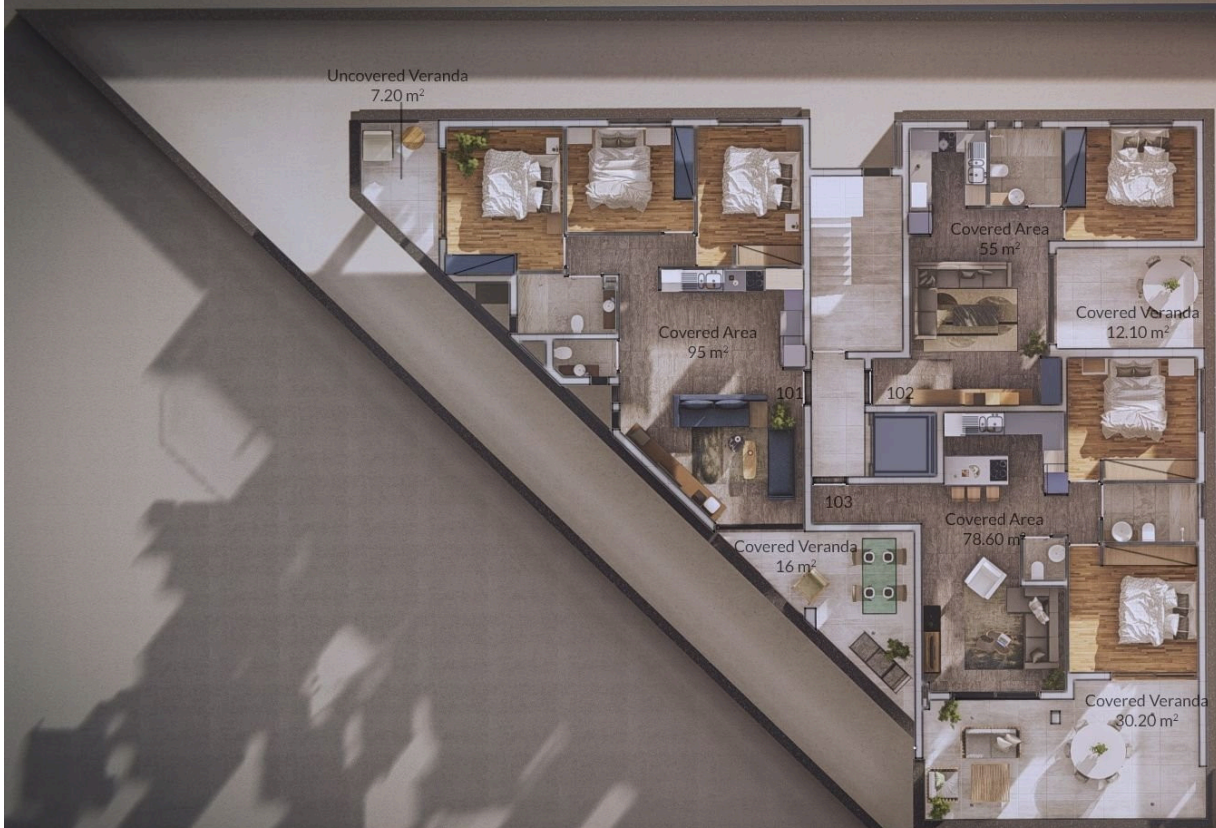
Furnished	Unfurnished
Structure	Concrete
Energy efficiency rating	 A

## Description

A unique residential building in the vibrant Polemidia area in Limassol. With its distinctive wooden facade and stunning swimming-pool the building exudes warmth and elegance, blending harmoniously with the surrounding natural environment. Situated just one minute away from the highway, our prime location ensures easy access to the city and beyond. Step into a world of contemporary living, where modern design meets timeless charm. The spacious apartments offer a perfect balance of comfort and style, while our meticulously crafted interiors create a welcoming ambiance.

Starting Construction early 2024 . Expected Delivery Summer 2025

# Floor plans



# Additional information

## Facilities

Aircondition, Provision

Parking, Covered

Elevator

Solar water heater

Gated complex

Storage

## Features

Balcony

Central TV system

Connected to electric mains

Easy access to main roads

Guest WC

Near bus route

Quiet area

Bright

Ceramic tiles

Double glazing

Fitted wardrobes

Investment opportunity

Open plan

Rental potential

CCTV

Combined kitchen and dining area

Easy access to highway

Garbage disposal

Near amenities

Pressurized water system

## Distances

Amenities



200 m

Airport



65 km

Sea



4 km

Schools




500 m

## Contact us



**Sofia Geralis**

 (+357) 99408353

 sgerali@vivorealty.com.cy