

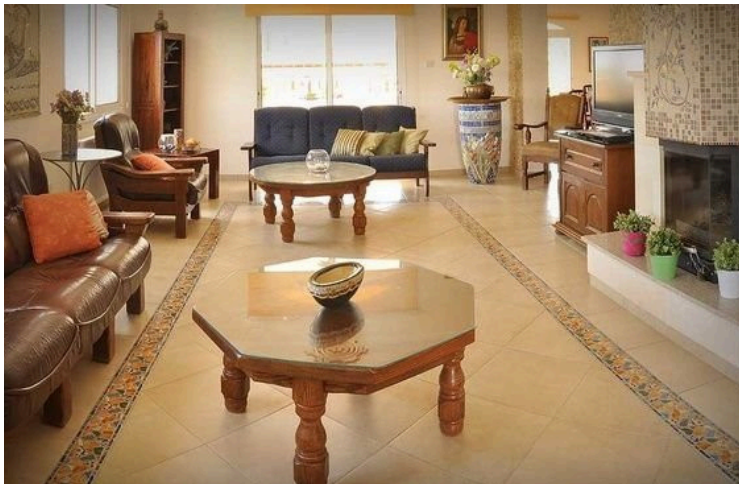
8180001

SPACIOUS 3 STOREY RESIDENTIAL BUILDING IN KOLOSSI

 Kolossi, Limassol

€5,800 +VAT /month





Overview

Specifications

Bedrooms

 **6**


Bathrooms

 **2**

Covered

 **640 m²**

Type	House
Showers	5
Toilets	8
Plot	1200 m²
Status	Used

Year of construction	2012
Furnished	Fully furnished
Structure	Concrete
Energy efficiency rating	 B+

Description

1. The building is built on two corner plots totaling 1,200 square meters, with three floors of 940 square meters each and separate entrances.
2. Available for rent are two floors with separate entrances, consisting of a total of 6 bedrooms with en-suite bathrooms, two sitting and dining areas, and two kitchens.
3. The building features 6 bathrooms, double walls, reinforced double-glazed windows, and stone columns for the verandas.
4. It has a large exclusive swimming pool (50 square meters), an external bathroom and shower for the pool area, and a beautiful garden with a BBQ area.
5. All rooms and areas are equipped with air conditioning and central heating systems.
6. The building has an alarm system, wheelchair access, a housekeeper or maid room with a bathroom, a storage area, and a large room that can be used as a hobby room, gym, or workshop.

So, in summary, it is a luxurious residential building in a prime location, with two floors available for rent, offering spacious living spaces, modern amenities, and shared access to the swimming pool, garden, and other common areas.



Floor plans

Villa Aretousa Ground Floor



Villa Aretousa - Middle Floor



Additional information

Facilities

Aircondition, Split system

Landscaped garden

Pergola

Childrens playground

Outdoor shower

Pool, Private

Heating, Central

Parking, Uncovered

Features

Alarm system

Barbeque

Ceramic tiles

Corner

Double glazing

En suite bathroom

Fitted wardrobes

Garden, large

Handicap accessible

Municipal water/sewage

Open plan

Pressurized water system

Shower

Veranda, large

Balcony, front

Bright

Combined kitchen and dining area

Country view

Easy access to highway

En suite shower

Garbage disposal

Ground floor bedroom

Internet

Near amenities

Openings in opposite sides

Quiet area

Sound insulation

Village view

Bar

Central TV system

Connected to electric mains

Cul de sac

Easy access to main roads

Entrance gate

Garden

Guest WC

Kitchen appliances

Next to green area

Pool bar

Sea view

Spacious rooms

Distances

Amenities



500 m

Airport



68 km

Sea



4 km

Schools




500 m



Contact us



Sofia Geralis

 (+357) 99408353

 sgerali@vivorealty.com.cy

