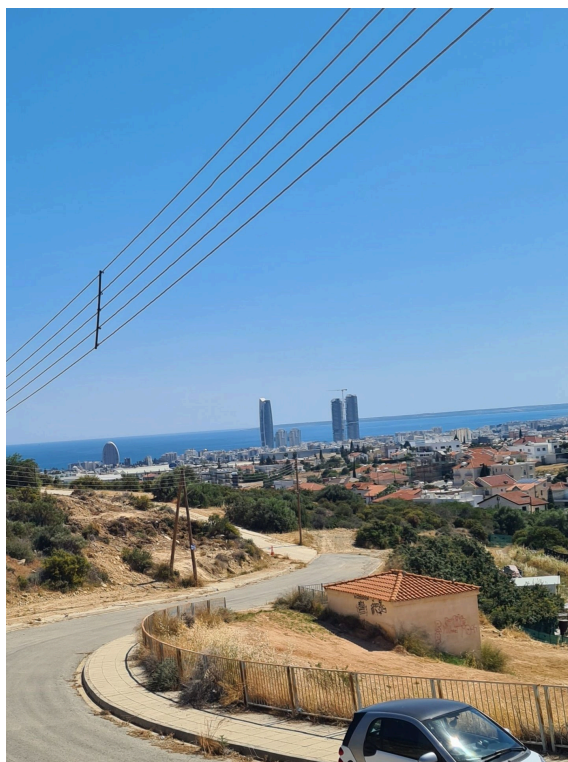




**VIVO**  
REALTY

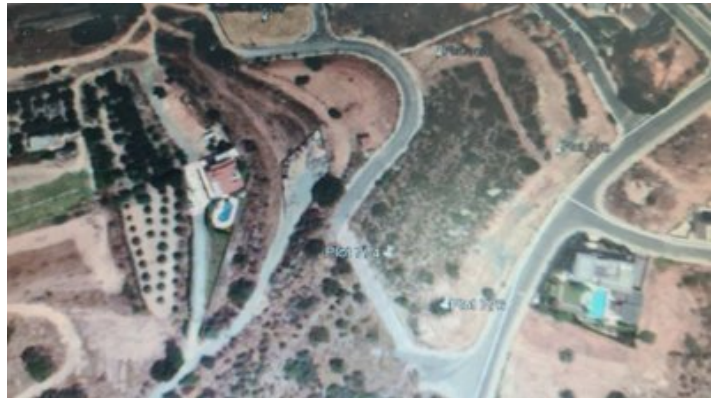


## RESIDENTIAL PLOT OF 666 M2 IN MERSINIES AREA -PANIOTIS HILL

 [Limassol, Paniotis Hills](#)

8179975





<b>Price</b>	€600,000 +VAT	<b>Type</b>	Building Plot
<b>Plot</b>	666 m <sup>2</sup>	<b>Area</b>	Limassol, Paniotis Hills

---

## Description

This is a Residential plot of 666 m2 in Mersinies area - Paniotis Hill with mountain, sea and city view. Mersinies is one of the most prestigious areas of Limassol with all amenities close by, easy access to the motor way and city center.



### Sofia Geralis

Property Consultant

✉ sgerali@vivorealty.com.cy

☎ (+357) 99408353

## Features

City view

Sea view

Near bus route

Near amenities

## Distances

**Amenities**

2 km

**Airport**

68 km

**Sea**

4 km

**Public Transport**

500 m

**Schools**

2 km

## Zones

Zone	Cover factor	Build factor	Max height	Max floors	Affected percentage
Com					
Res	35%	60%	0 m	2	