



**VIVO**  
REALTY

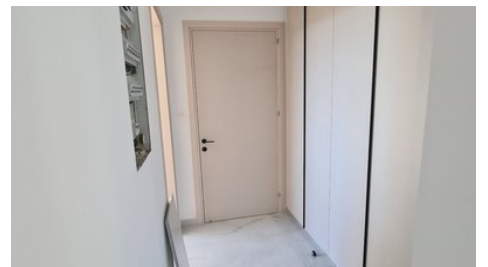
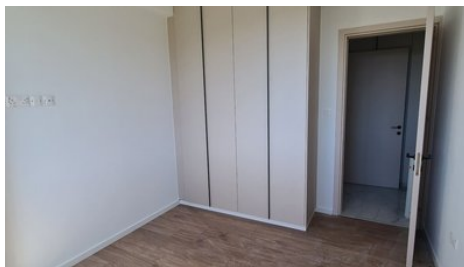
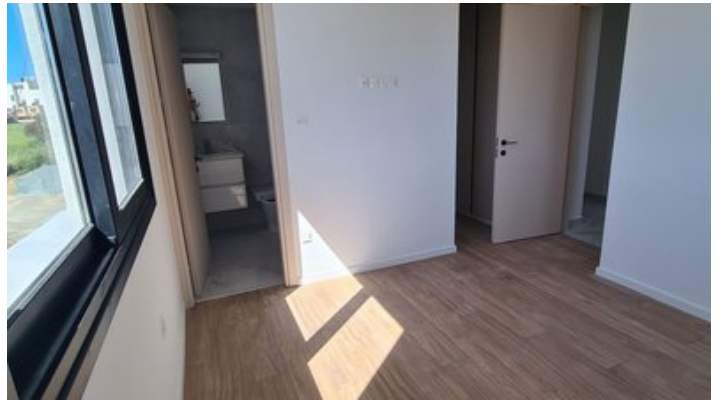


## KEY READY THREE BEDROOM MODERN DESIGN APARTMENT IN TSIFLIKOUDIA AREA

 [Limassol, Tsiflikoudia Limassol](#)

8179933





<b>Price</b>	€430,000 +VAT	<b>Type</b>	Apartment
<b>Bedrooms</b>	3	<b>Bathrooms</b>	1
<b>Covered</b>	103.1 m <sup>2</sup>	<b>Covered veranda</b>	22.57 m <sup>2</sup>
<b>Year of Construction</b>	2023	<b>Status</b>	Key ready
<b>Energy efficiency rating</b>	A	<b>Floor</b>	3 / 4
<b>Area</b>	Limassol, Tsiflikoudia Limassol		

## Description

A modern design complex of only 7 apartments in Tsiflikoudia area close to the Limassol Marina.

It comprises of two and three bedroom apartments. It's an ideal investment for a family seeking a permanent residence on the outskirts of town, with easy and quick access to the motorway. The top floor apartments enjoy a splendid view from their large verandas.

The apartments have large rooms, comfortable verandas and the building is located in a very quiet area. In the surrounding area there are all the necessary amenities, such as parks and schools.

Expected delivery February 2024



### Sofia Geralis

Property Consultant

✉ [sgerali@vivorealty.com.cy](mailto:sgerali@vivorealty.com.cy)

☎ (+357) 99408353

## Facilities

Aircondition, Provision

Elevator

Solar water heater

Parking, Covered

Storage

---

## Features

Sound insulation

Easy access to main roads

Connected to electric mains

Fitted wardrobes

Pressurized water system

Bright

Rental Potential

Walking distance to beach

Near amenities

Thermal insulation

Combined kitchen and dining area

Balcony

Garbage disposal

Investment opportunity

CCTV

En suite Shower

Near bus route

Internet

---

## Distances

**Amenities** 200 m

**Sea** 1 km

**Schools** 300 m

**Airport** 65 km

**Public Transport** 200 m

**Resort** 4 km

## Floor plans

