



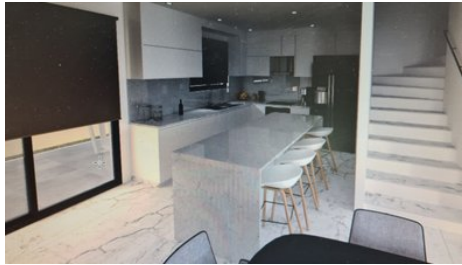
**VIVO**  
REALTY



## OFF PLAN LINKED DETACHED 3 BEDROOM HOUSE No 9 IN KOLOSSI

 **Limassol, Kolossi**

**8179224**



|                          |                    |                                 |                      |
|--------------------------|--------------------|---------------------------------|----------------------|
| <b>Price</b>             | €310,000 +VAT      | <b>Type</b>                     | Semi-Detached Villa  |
| <b>Bedrooms</b>          | 3                  | <b>Bathrooms</b>                | 1                    |
| <b>Covered</b>           | 132 m <sup>2</sup> | <b>Covered veranda</b>          | 17 m <sup>2</sup>    |
| <b>Uncovered veranda</b> | 11 m <sup>2</sup>  | <b>Covered parking</b>          | 18.26 m <sup>2</sup> |
| <b>Plot</b>              | 172 m <sup>2</sup> | <b>Year of Construction</b>     | 2022                 |
| <b>Status</b>            | Off plan           | <b>Energy efficiency rating</b> | A                    |
| <b>Area</b>              | Limassol, Kolossi  |                                 |                      |

---

## Description

Project of 9 houses off plan in Kolossi area, with inn 12 minutes drive from city center and easy access to the high way

Spacious living areas of 132 m2 in total, open plan kitchen, living room, covered garage.

Estimated delivery: 10-12 months from signing



### Sofia Geralis

Property Consultant

✉ [sgerali@vivorealty.com.cy](mailto:sgerali@vivorealty.com.cy)

☎ (+357) 99408353

## Facilities

Aircondition, Provision  
 Parking, Covered

Heating, Provision  
 Solar water heater

---

## Features

Shower  
 Sound insulation  
 Easy access to highway  
 Connected to electric mains  
 Under stairs storage  
 Attic  
 Ceramic tiles  
 Guest WC  
 Quiet Area  
 En suite Shower

Central TV system  
 Easy access to main roads  
 Combined kitchen and dining area  
 Fitted wardrobes  
 Pressurized water system  
 Open plan  
 Double glazing  
 Veranda  
 Rental Potential

---

## Distances

**Amenities** 200 m  
**Sea** 5 km  
**Schools** 500 m

**Airport** 65 km  
**Public Transport** 500 m

## Floor plans

