

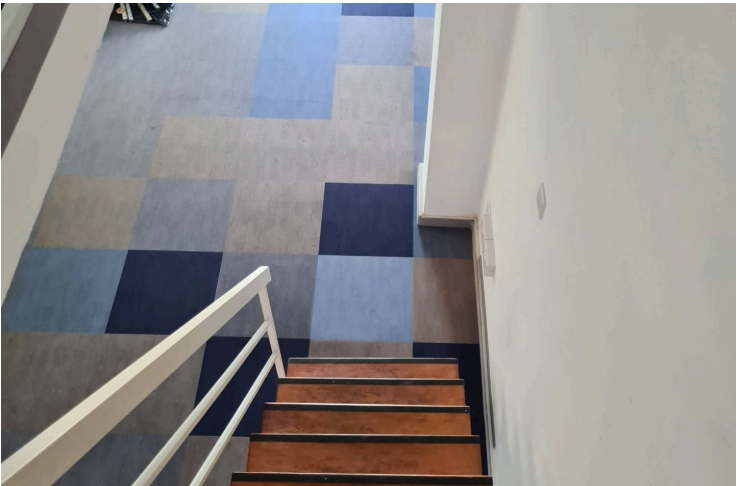
8179127

GROUND FLOOR OFFICE SPACE OF 165 M2 IN THE CITY CENTER

📍 Limassol, City Center, Limassol

€2,500 /month





Overview

Specifications

Covered

 110 m²

Type	Office
Toilets	2
Status	Key ready

Furnished	Fully furnished
Energy efficiency rating	 B

Description

A ground floor office space of 165 m2 located in Nikou Pattichi str in the heart of the city center. Open space of 110 m2 the ground floor with 2 w/c and vertical Venetian blinds in all windows. Two stair cases leading to open space of 55 m2 mezzanine, a/c unit and fitted book case.

2 Deposits and 1 Rent are required from the owner.

Additional information

Facilities

Aircondition, Split system

Parking, Uncovered

Features

Connected to electric mains

Easy access to highway

Easy access to main roads

Excellent condition

Heart of city center

Internal stairs

Internet

Main road

Municipal water/sewage

Near amenities

Near bus route

Near public transport

Painted

Distances

Amenities

 100 m

Airport

 65 km

Sea

 4 km

Schools

 500 m

Contact us



Sofia Geralis

 (+357) 99408353

 sgerali@vivorealty.com.cy