

8178312

3 BEDROOM MODERN DESIGN LINKED DETACHED CORNER HOUSE UNDER CONSTRUCTION IN PALODIA

 Palodia, Limassol

€349,000 +VAT





Overview

Specifications

Bedrooms

 3


Bathrooms

 1

Covered

 132.96 m²

Type	Link-Detached Villa
Showers	1
Toilets	3
Plot	220 m ²
Status	Under construction

Year of construction	2022
Furnished	Unfurnished
Structure	Concrete
Energy efficiency rating	 A

Description

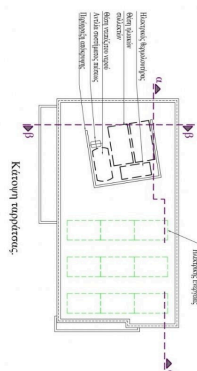
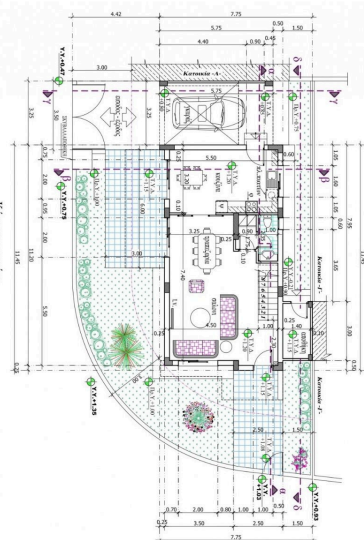
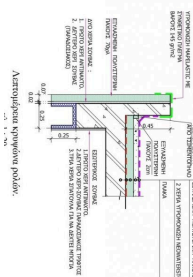
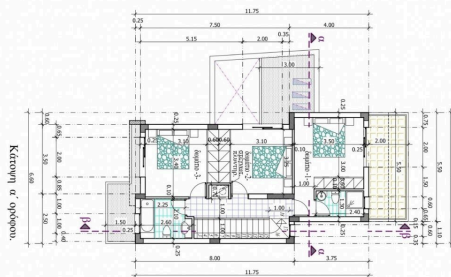
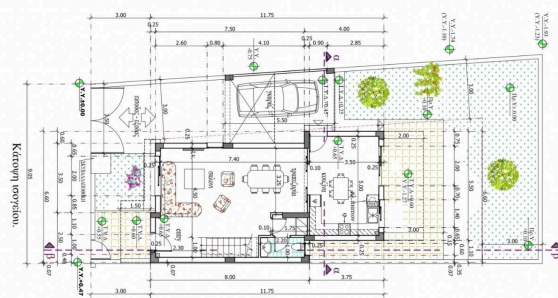
A minimal modern design complex of 3 linked detached houses located in Palodia village.

Palodia is just 8 minutes drive from the roundabouts of Agia Fyla and Polemidia.

This corner house of 3 bedrooms the main with en - suite shower, open plan kitchen, quest w/c, dining & lounge area, full bathroom and spacious covered veranda. and covered parking.

Expected delivery September 2023.

Floor plans



Architectural floor plan.

1:20

Additional information

Facilities

Aircondition, Provision

Solar water heater

Heating, Provision

Storage

Parking, Covered

Features

Central TV system

Connected to electric mains

En suite shower

Internal stairs

Near bus route

Shower

Ceramic tiles

Double glazing

Fitted wardrobes

Modern design

Open plan

Thermal insulation

Combined kitchen and dining area

Easy access to main roads

Guest WC

Near amenities

Pressurized water system

Veranda, large

Distances

Amenities



200 m

Airport



65 km

Sea



8 km

Schools



300 m

Contact us



Sofia Geralis

 (+357) 99408353

 sgerali@vivorealty.com.cy