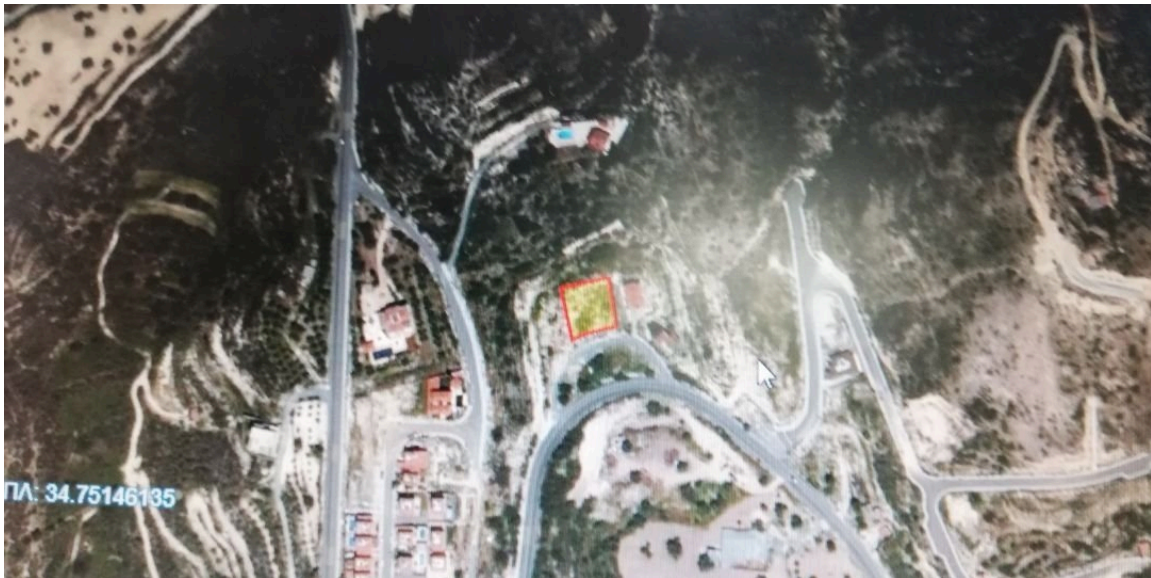




VIVO
REALTY



RESIDENTIAL PLOT OF 865 M2 IN PALODEIA

 [Limassol, Palodia](#)

8175440

Price	€200,000 +VAT	Type	Building Plot
Plot	865 m ²	Area	Limassol, Palodia

Description

Residential plot of 865 m2 in Palodia village with all the necessary services (water, electricity, telephone).

Palodia is a village located just 7KM north of Limassol city center. The village is built on an altitude of 250 meters and it is near the villages of Spitalas, Paramytha and Fasoula



Sofia Geralis

Property Consultant

✉ sgerali@vivorealty.com.cy

☎ (+357) 99408353

Features

Connected to electric mains

Mountain view

Distances

Amenities

500 m

Airport

65 km

Sea

10 km

Public Transport

600 m

Zones

Zone	Cover factor	Build factor	Max height	Max floors	Affected percentage
Com					
Res	25%	40%	8.3 m	2	