

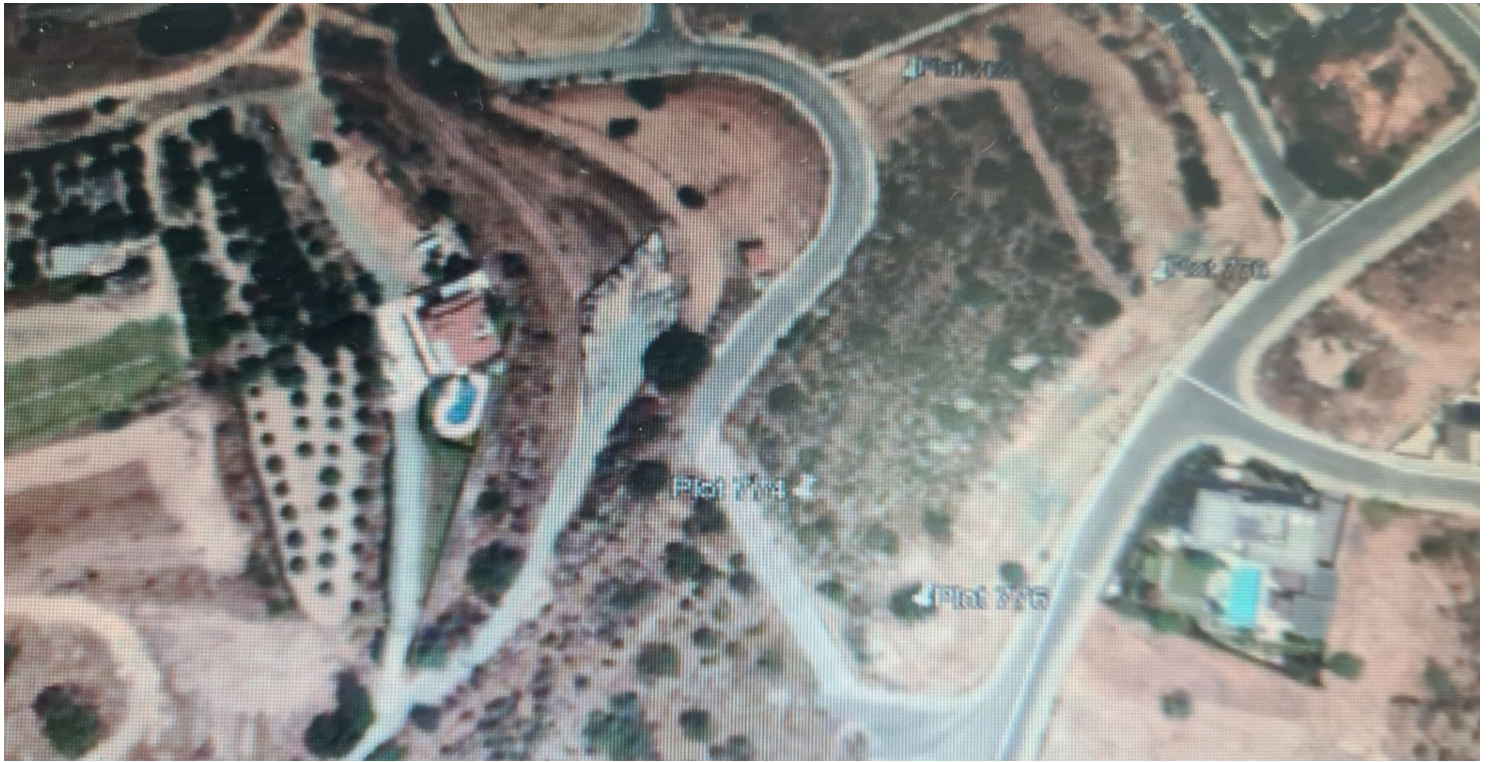
8175102

RESIDENTIAL PLOT OF 627 M2 IN MERSINIES AREA -PANIOTIS HILL

 Paniotis Hills, Limassol

€670,000 +VAT





Overview

Specifications

Area

 627 m²

Type

Building Plot

Description

This is a Residential plot of 627 m2 in Mersinies area - Paniotis Hill with mountain, sea and city view.

Mersinies is one of the most prestigious areas of Limassol with all amenities close by, easy access to the motor way and city center.



Additional information

Features

City view

Near amenities

Near bus route

Sea view

Distances

Amenities

 2 km

Airport

 68 km

Sea

 4 km

Public transport

 500 m

Schools

 2 km


Planning zones

Zone	Cover factor	Build factor	Max height	Max floors	Affected percentage
Res	35%	60%	0 m	2	-

Contact us



Sofia Geralis

 (+357) 99408353

 sgerali@vivorealty.com.cy

