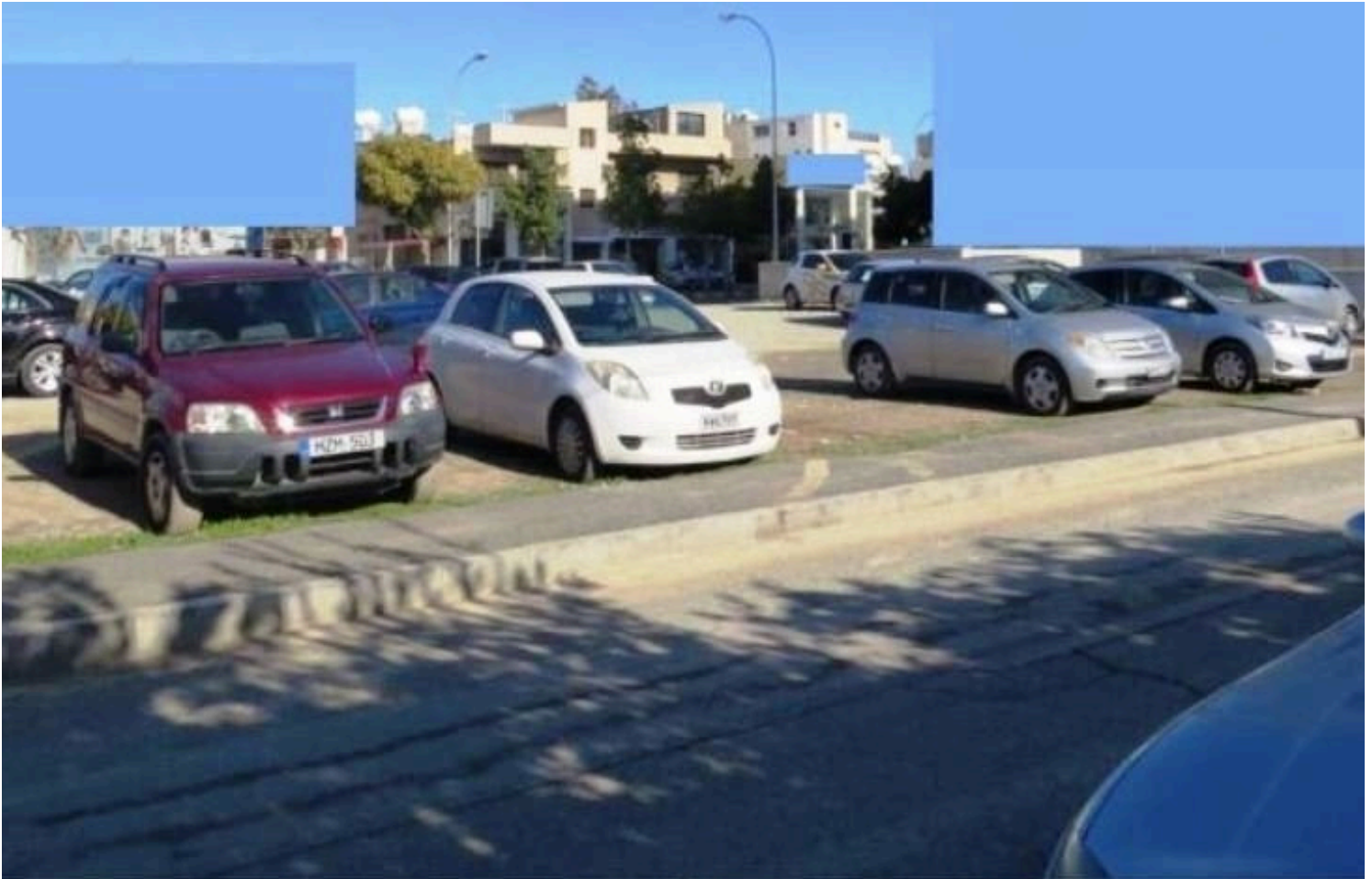


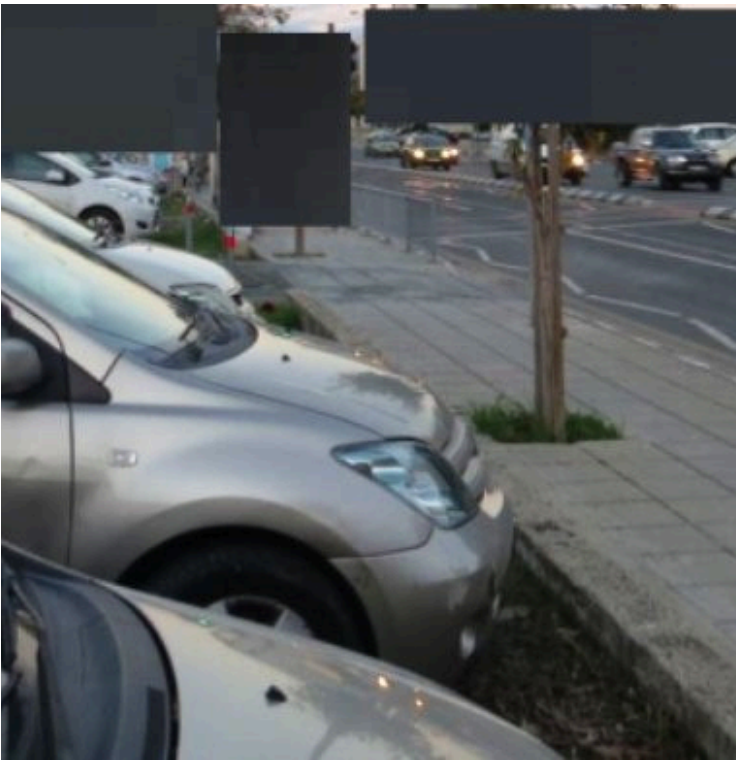
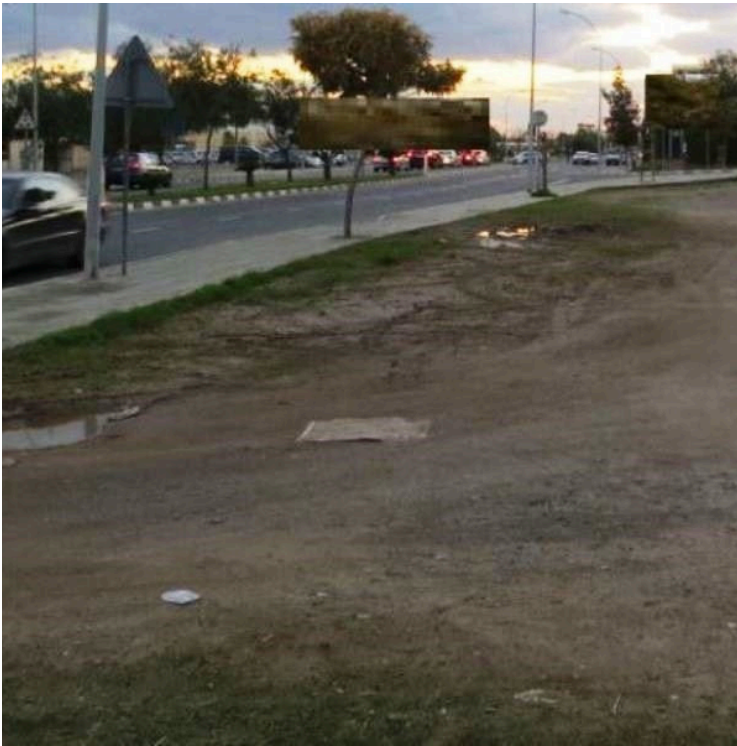
8172626

COMMERCIAL PLOT FOR SALE IN SPYROU KYPRIANOOU AVENUE

📍 Limassol, Limassol

€1,800,000 +VAT





Overview

Specifications

Area

 1066 m²

Type

Building Plot

Description

Commercial plot of 1066 square meters in Spyrou Kyprianou Avenue with building density of 140%, coverage of 50% with height of 17 meters over 4 floors. Situated in the heart of Limassol with easy access to the motor way. Suitable for office spaces or commercial shops.

Additional information

Features

Investment opportunity

Contact us



Sofia Geralis

 (+357) 99408353

 sgerali@vivorealty.com.cy