

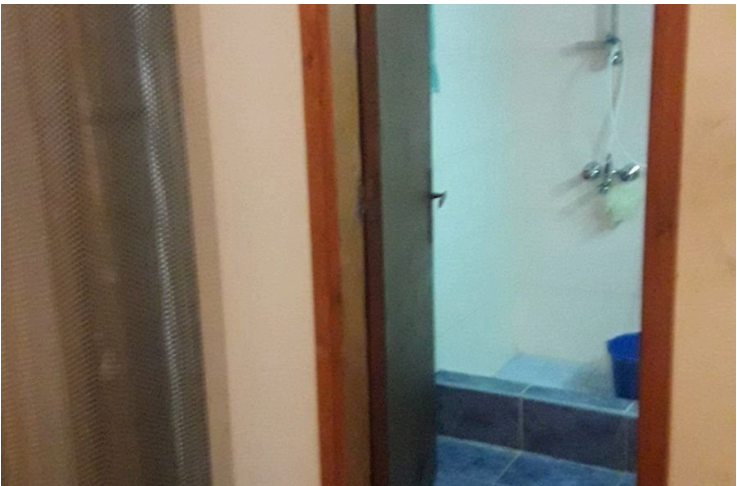
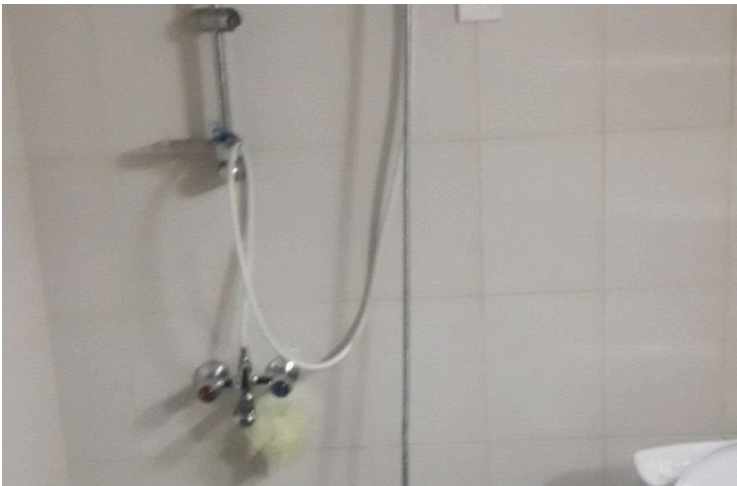
8168714

DOUBLE STOREY VILLAGE STYLE STONE HOUSE IN PELENDRI

 Pelentri, Limassol

€100,000 ~~€120,000~~





Overview

Specifications

Bedrooms



Bathrooms



Type

Semi-Detached Villa

Status

Resale

Title deed

Yes

Energy efficiency rating



Description

This is a traditional village style renovated stone house in Pelendri. Its a double storey renovated house with separate entrance. Each floor consists of one bedroom , bathroom, sitting area and kitchen.

Located below the Troodos Mountains, in the region of Pitsilia. It is located on a barren hillside, at an altitude of 800 meters above sea level, 40 kilometers from the city of Limassol. Adjacent to the Trimiklini villages Saittas, Potamitissa and Amiandos.



Additional information

Facilities

Parking, Uncovered

Solar photovoltaic panels

Features

Guest WC


Indoor fireplace

Internet

Contact us



Sofia Geralis

 (+357) 99408353

 sgerali@vivorealty.com.cy

