



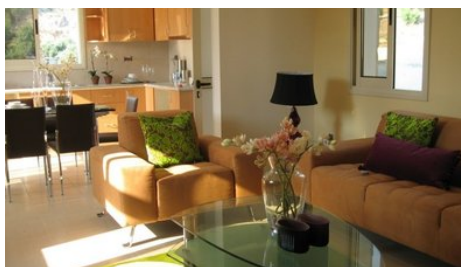
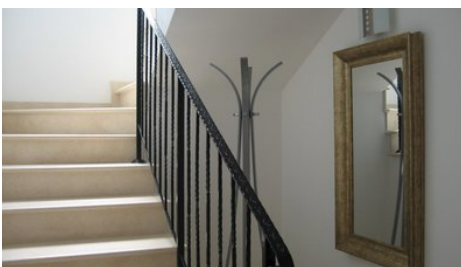
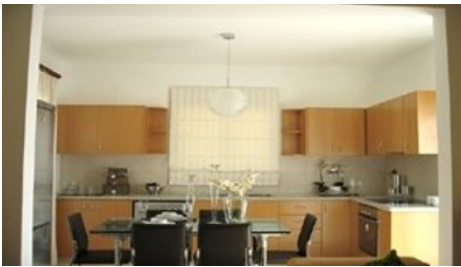
**VIVO**  
REALTY



## RESALE 3 BEDROOM DETACHED HOUSE IN APSIU

 [Limassol, Apsiou](#)

8100322



<b>Price</b>	€190,000 €230,000	<b>Type</b>	Detached Villa
<b>Bedrooms</b>	3	<b>Bathrooms</b>	1
<b>Covered</b>	135 m <sup>2</sup>	<b>Plot</b>	342 m <sup>2</sup>
<b>Year of Construction</b>	2008	<b>Status</b>	Resale
<b>Area</b>	Limassol, Apsiou		

## Description

This is truly an amazing place with a clean environment, stunning views of the mountain scenery and all this combined with a calm and relaxing atmosphere of country living. Each house in the project called sonorous grapes. What makes each of them an individual and unique in its kind. Exterior architectural design of houses designed in traditional Cypriot style that successfully blends into the landscape. Great combination of stone, wooden pergolas and stylish modern interior.

The villa consist of 3 bedrooms, 2 bathrooms, fully equipped kitchen with appliances, spacious living room with fireplace. There is also a cozy gazebo, garden, private parking, small private pool, fully furnished. Bonus - Mercedes Benz E class!

### Location

The village is situated on the southern coast of Cyprus, 17km north of Limassol, at an altitude of 410 meters above sea level. Location of the village is ideal because it is located halfway toward two airports in Larnaca and Paphos. The landscape of the village and its surroundings varied: vineyards, passing in olive, almond groves, rugged hills near fertile valleys, parks pine trees with seating, springs and river Garyllis



**Sofia Geralis**  
 Property Consultant

✉ sgerali@vivorealty.com.cy

☎ (+357) 99408353

## Facilities

Pool, Private

Self contained annex

Solar photovoltaic panels

---

## Features

Fitted wardrobes

Water softener

Garden

Open plan

Double glazing

Guest WC

Veranda

Ground Floor Bedroom

Quiet Area

En suite Bathroom

Internet

Indoor Fireplace

Kitchen appliances

---

## Distances

**Sea**

15 km