

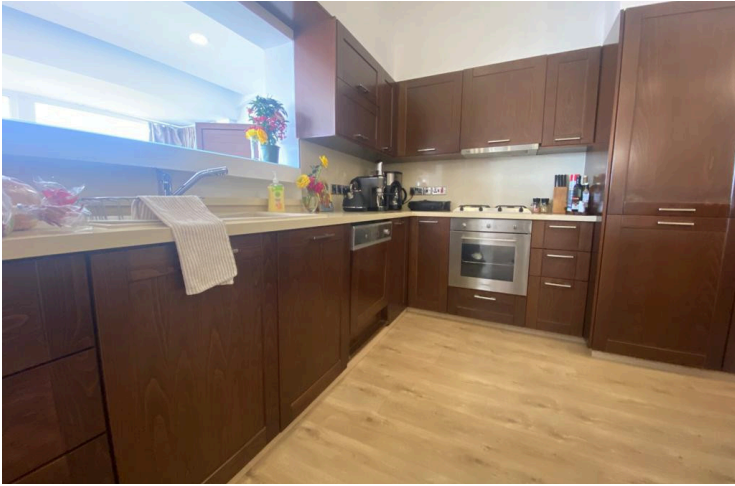
78185773

THREE BEDROOM APARTMENT IN PANTHEA - LIMASSOL

 Panthea, Limassol

€1,900 /month





Overview

Specifications

Bedrooms



3

Bathrooms



2

Covered



220 m²

Type	Apartment	Toilets	3
Showers	2	Furnished	Fully furnished

Description

Spacious and modern, this 220 sqm apartment in Panthea offers comfortable living in a quiet yet convenient location. The property features three generously sized bedrooms and two well-appointed bathrooms, making it an ideal choice for families or professionals seeking extra space.

This apartment comes fully furnished with tasteful décor, allowing you to settle in immediately without the need for additional purchases. The open-plan living and dining areas are bright and airy, providing the perfect setting for relaxation or entertaining guests. Large windows offer impressive views over the city, adding to a sense of openness and tranquility.

Located in Panthea, a highly sought-after residential area known for its peaceful surroundings and easy access to the city. Residents enjoy quick connectivity to the highway, simplifying commutes to work or leisure trips. All amenities, including supermarkets, schools, and shops, are close by, ensuring daily needs are always within reach.

This quality rental is presented by Vivo Realty. Contact us to arrange a viewing and experience all that this exceptional apartment has to offer.



Additional information

Facilities

Aircondition, Split system

Parking, Uncovered

Storage

Features

Balcony

Bright

City view

Easy access to highway

Easy access to main roads

Guest WC

Near amenities

Near bus route

Next to green area

Distances

Amenities

 300 m

Airport

 55 km

Public transport

 300 m

Contact us



Alex Dunaisky

 (+357) 96388790

 alexd@vivorealty.com.cy

