

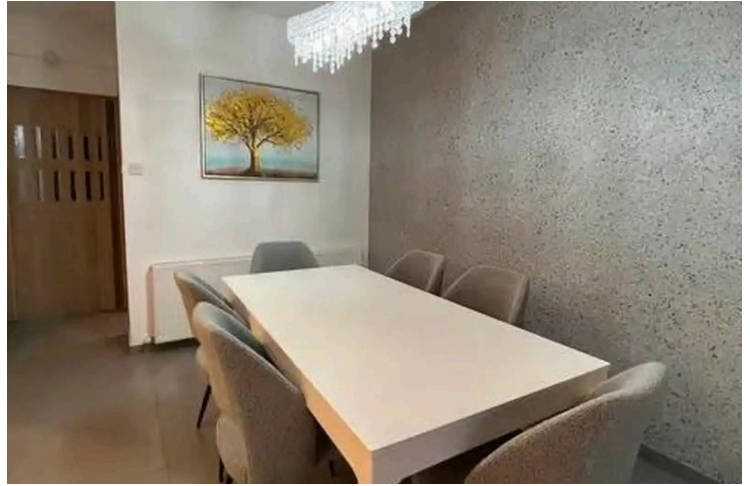
77185839

# 3 BEDROOM SEMI- DETACHED IN MESA GEITONIA

 Mesa Geitonia, Limassol

**€3,200** /month





# Overview

## Specifications

Bedrooms



3

Bathrooms



3

Covered

140 m<sup>2</sup>

Type	<b>Semi-Detached Villa</b>
Showers	<b>2</b>
Toilets	<b>3</b>
Plot	<b>280 m<sup>2</sup></b>

Status	<b>Key ready</b>
Year of construction	<b>2012</b>
Furnished	<b>Fully furnished</b>
Structure	<b>Concrete</b>

## Description

Welcome to this key-ready semi-detached villa available to rent in the highly sought-after area of Mesa Geitonia. With a generous internal space of 140 m<sup>2</sup>, this property offers a comfortable and modern living environment for families or professionals. Pets allowed.

Inside, the villa features three spacious bedrooms and three well-appointed bathrooms, all designed for maximum comfort. The home comes fully furnished with tasteful, high-quality furniture, making your move hassle-free. The central AC system ensures a pleasant indoor climate all year round.

Mesa Geitonia is a vibrant and convenient residential area well known for its peaceful atmosphere and easy access to city life. Here, you will find a range of amenities including schools, supermarkets, cafes, and parks within a short distance, making daily living easy and enjoyable. The location is highly connected, providing quick access to business centers and key transport links.

Built in 2012, this villa has been maintained to a high standard, offering both style and practicality. Don't miss the chance to live in comfort and convenience. Contact Vivo Realty today to arrange a viewing or to find out more about this outstanding property.



# Additional information

## Facilities

Aircondition, Central system

Heating, Central

Landscaped garden

Parking, Covered

Solar photovoltaic panels

Storage

## Features

Barbeque

Bath

Bright

Combined kitchen and dining area

Double glazing

Easy access to main roads

En suite bathroom

En suite shower

Garden

Granite flooring

Kitchen appliances

Kitchenette

Near amenities

Near bus route

Next to green area

Painted

Parquet flooring

Pets allowed

Shower

Spacious rooms

Suitable for work

Veranda

Veranda, back

Veranda, large

Walk-in closet

Walking distance to beach

## Distances

Amenities

 200 m

Sea

 200 m


Public transport

 200 m

## Contact us



**Filip Herba**

 (+357) 97744973

 fherba@vivorealty.com.cy

