

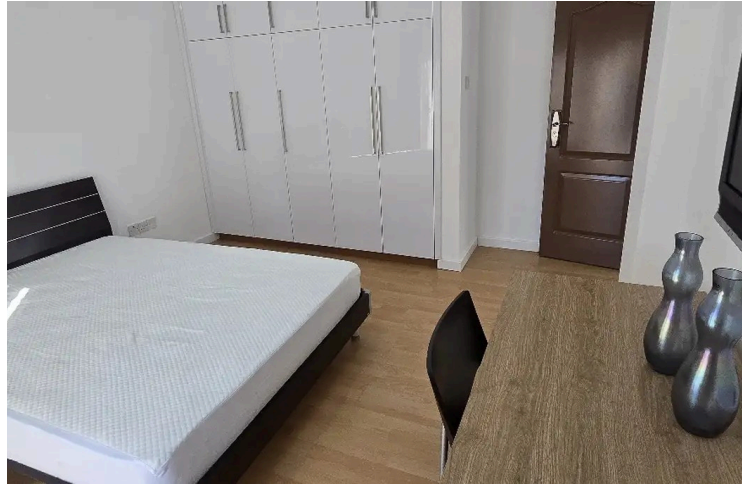
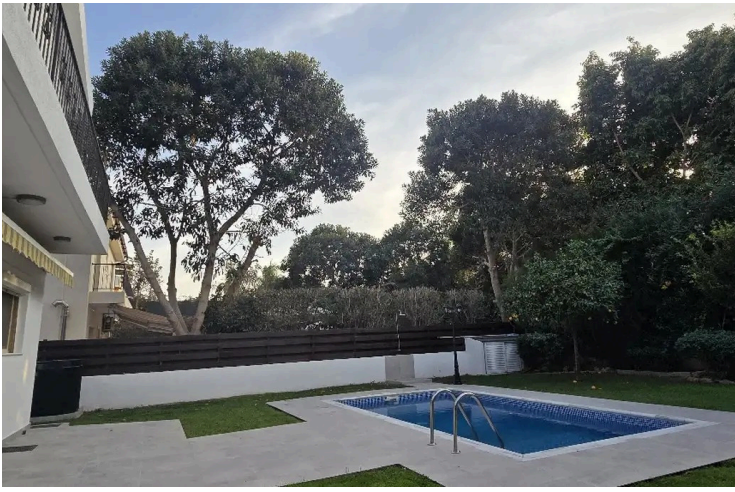
77185837

FOUR BEDROOM DETACHED VILLA IN POTAMOS GERMASOGEIAS

📍 Potamos Germasogeias, Limassol

€7,500 /month





Overview

Specifications

Bedrooms



4

Bathrooms




4

Covered



750 m²

Type	Detached Villa
Showers	3
Toilets	4
Plot	750 m²
Status	Key ready

Year of construction	2022
Furnished	Fully furnished
Structure	Concrete
Energy efficiency rating	 A

Description

Available for rent is a stunning, detached villa located in the sought-after area of Potamos Germasogeias. This modern home was built in 2022 and is key ready, providing a turnkey solution for comfortable living. The villa offers a generous internal space of 750 square meters, set on a large plot for extra privacy and outdoor enjoyment. Pets allowed.

The property features four spacious bedrooms and four bathrooms, all designed with quality and style in mind. The layout is open and filled with natural light, creating a welcoming atmosphere throughout. You will find the villa fully furnished with tasteful, modern décor, and equipped with a central air conditioning system to ensure a comfortable environment year-round.

Outdoors, residents can enjoy a private swimming pool surrounded by a peaceful garden, ideal for relaxing or entertaining guests. The villa is conveniently close to local amenities, including shops, restaurants, and leisure facilities. Potamos Germasogeias itself is a popular area known for its blend of vibrant urban living and relaxed residential feel, offering easy access to both the city and the sea.

This high-standard property boasts an energy efficiency rating of A, ensuring low running costs. To arrange a viewing or learn more, please contact Vivo Realty.



Additional information

Facilities

Aircondition, Central system

Pool, Private

Storage

Landscaped garden

Solar photovoltaic panels

Parking, Covered

Solar water heater

Features

Alarm system

Balcony, back

Double glazing

En suite shower

Granite flooring

Kitchen appliances

Modern design

Next to green area

Pets allowed

Quiet area

Spiral staircase

Veranda, back

Attic

Bath

Easy access to main roads

Entrance gate

High ceilings

Kitchenette

Near amenities

Painted

Play room

Separate dining area

Suitable for work

Walking distance to beach

Balcony

Bright

En suite bathroom

Garden

Indoor fireplace

Luxury specifications

Near bus route

Parquet flooring

Pressurized water system

Shower

Veranda

Distances

Amenities



200 m

Sea



300 m

Public transport




200 m

Contact us



Filip Herba

 (+357) 97744973

 fherba@vivorealty.com.cy

