

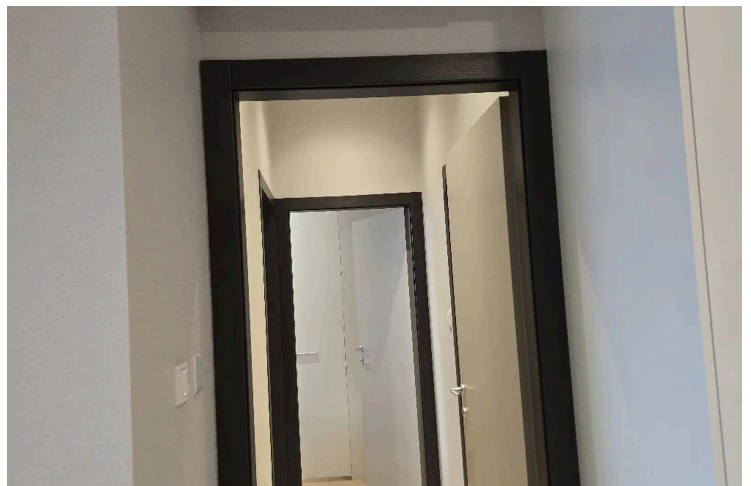
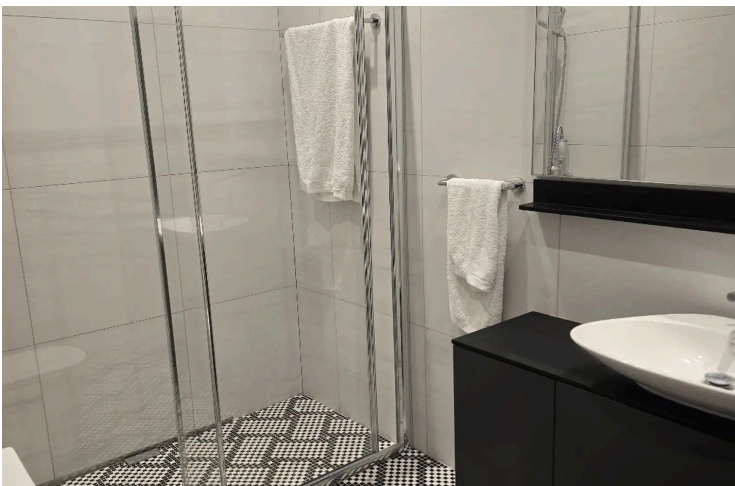
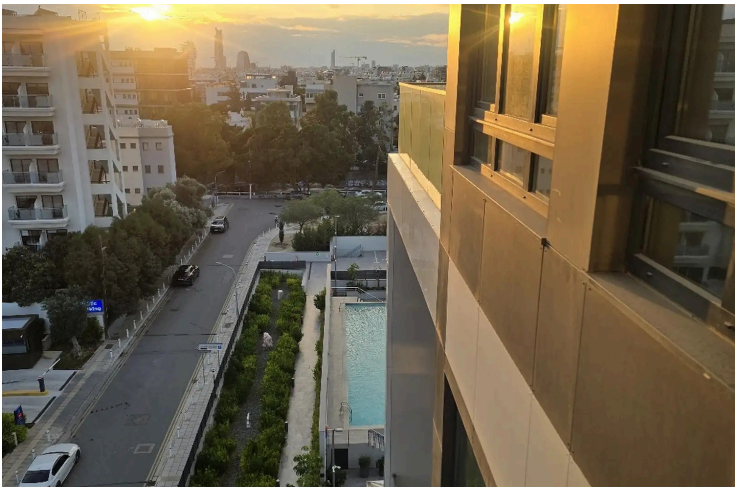
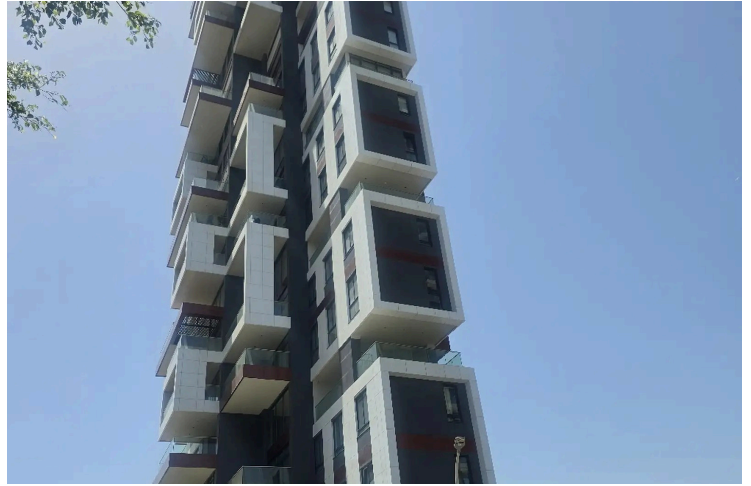
77185800

MODERN 2 BEDROOM APARTMENT IN POTAMOS GERMASOGEIAS

 Potamos Germasogeias, Limassol

€4,900 /month





Overview

Specifications

Bedrooms

 2


Bathrooms

 2

Covered

 96 m²

Type	Apartment
Showers	1
Toilets	2
Status	Key ready

Year of construction	2024
Furnished	Fully furnished
Structure	Concrete
Energy efficiency rating	 A

Description

This modern, key ready apartment is available for rent in the sought-after area of Potamos Germasogeias. With a spacious internal area of 96 m², the apartment offers two comfortable bedrooms and two stylish bathrooms, making it an excellent choice for couples or small families. Pets allowed.

Built in 2024, the property features a contemporary design and is fully furnished with high-quality pieces, allowing you to move in with ease. Enjoy year-round comfort thanks to the central air conditioning system and benefit from the energy efficiency class A, ensuring lower utility costs and a more sustainable living environment.

Residents can take advantage of convenient features such as an elevator and access to a communal swimming pool, perfect for relaxing or spending time with friends. The apartment's location in Potamos Germasogeias means you are close to a range of amenities including shops, restaurants, and parks, all within a short distance from your door.

Potamos Germasogeias is known for its vibrant atmosphere, safe streets, and proximity to both the sea and main city attractions, offering a perfect balance of relaxation and convenience.

This listing is presented by Vivo Realty. Contact us today to arrange a viewing.



Additional information

Facilities

Aircondition, Central system

Landscaped garden

Sauna

Elevator

Parking, Covered

Solar water heater

Gym

Pool, Communal

Storage

Features

Alarm system

Bright

Easy access to main roads

Kitchen appliances

Modern design

Next to green area

Pets allowed

Spacious rooms

Balcony

Combined kitchen and dining area

Garden

Kitchenette

Near amenities

Painted

Pressurized water system

Suitable for work

Balcony, back

Double glazing

Granite flooring

Luxury specifications

Near bus route

Parquet flooring

Shower

Walking distance to beach

Distances

Amenities

 200 m

Sea

 200 m


Public transport

 200 m

Contact us



Filip Herba

 (+357) 97744973

 fherba@vivorealty.com.cy

