

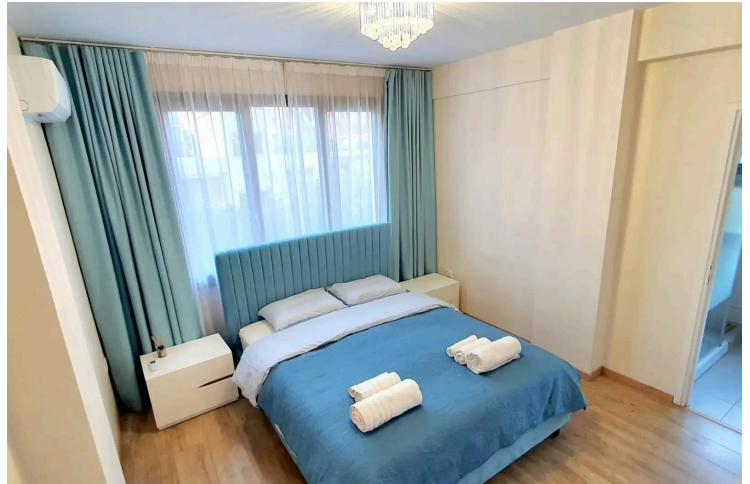
77185557

# SPACIOUS 2 BEDROOM APARTMENT IN NEAPOLIS

 Neapolis, Limassol

**€2,300** /month





# Overview

## Specifications

Bedrooms



2

Bathrooms



2

Covered



145 m<sup>2</sup>

Type	<b>Apartment</b>	Furnished	<b>Fully furnished</b>
Status	<b>Key ready</b>	Structure	<b>Concrete</b>
Year of construction	<b>1994</b>	Energy efficiency rating	<b>B+</b>

## Description

Available for rent is a spacious, key-ready apartment with 145 m<sup>2</sup> of internal space, situated on the second floor of a well-maintained seven-story building with elevator access. This fully furnished residence features two comfortable bedrooms and two modern bathrooms, offering a practical layout well-suited for families or professionals. It also includes dedicated office corner and spacious living room with Italian-made furnitures. Pets not allowed.

The apartment is designed to ensure comfort throughout the year with a central AC system and has been tastefully furnished to meet all your daily needs. Large living areas, a contemporary kitchen, and generous natural light create a welcoming atmosphere. Each bedroom is thoughtfully arranged to provide relaxing private spaces.

Located in the heart of Neapolis, this apartment provides quick access to a variety of amenities, including shops, restaurants, schools, and public transport. Neapolis is a vibrant urban district known for its lively character, well-kept streets, and proximity to the sea, making it a highly sought-after location for both locals and expatriates. Enjoy a lifestyle where everything is just a short walk away.

Don't miss the chance to live in one of the most popular neighborhoods. For more details or to arrange a viewing, contact Vivo Realty today.



# Additional information

## Facilities

Aircondition, Central system

Elevator

Parking, Uncovered

Solar photovoltaic panels

## Features

Balcony

Balcony, back

Bright

Combined kitchen and dining area

Double glazing

Easy access to main roads

Garden

Kitchen appliances

Kitchenette

Modern design

Near amenities

Near bus route

Next to green area

Office

Painted

Parquet flooring

Shower

Spacious rooms

Suitable for work

Walking distance to beach

## Distances

Amenities

 100 m

Sea

 100 m


Schools

 200 m

## Contact us



**Filip Herba**

 (+357) 97744973

 fherba@vivorealty.com.cy

