

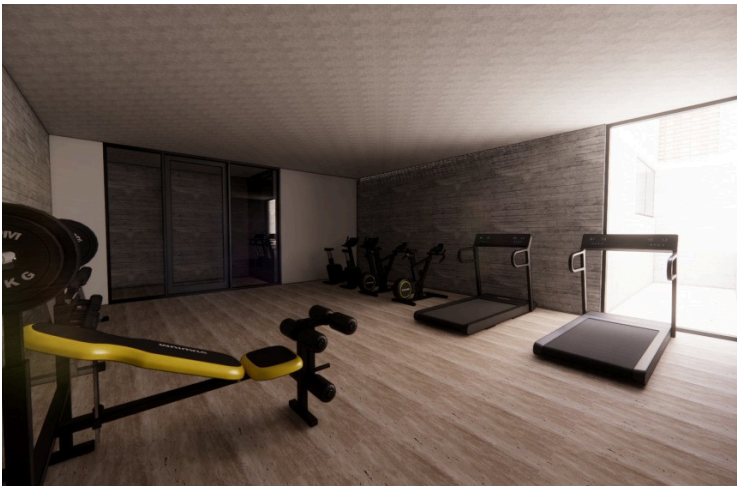
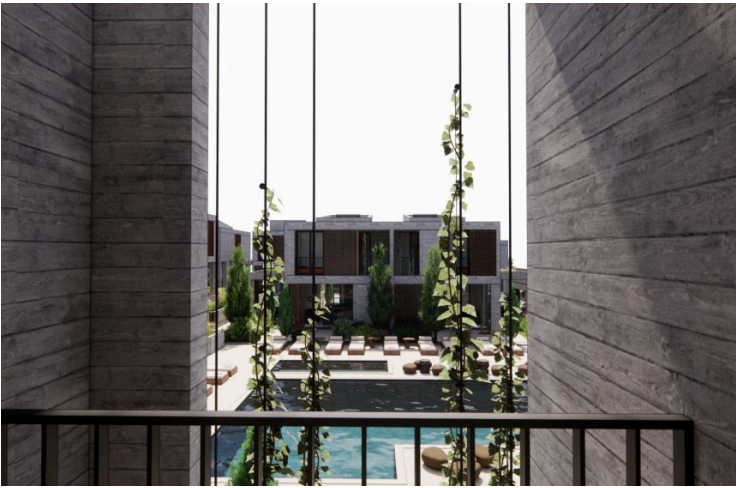
76184803

MODERN 1- BEDROOM APARTMENT IN EMBA

 Emba, Paphos

€290,000 +VAT





Overview

Specifications

Bedrooms

 1

Bathrooms

 1

Covered

 55 m²

Type **Apartment**

Showers **1**

Toilets **1**

Covered veranda **15 m²**

Status **Off plan**

Description

This new development in Emba represents a fresh chapter of contemporary residential design, combining bold architecture with urban style. Located along a central road but set slightly back from traffic, it offers the perfect balance of city convenience and peaceful living. The development also includes a selection of luxury villas, providing a variety of housing options in the same serene location.

2-Bedroom Apartment Features:

Spacious layout with 2 bedrooms and modern bathrooms

Open-plan living and dining area with abundant natural light

Fully equipped kitchen with high-quality finishes

Private balcony or veranda for outdoor relaxation

Access to allocated parking and communal amenities

Development Highlights:

Large communal swimming pool and kids' pool

Reception area, lobby, and sitting area for residents

Basement gym for an active lifestyle



Additional information

Facilities

Elevator

Gym

Parking, Covered

Pool, Communal

Sauna

Features

Entrance gate

Pool bar

Distances

Amenities



1.2 km

Airport



19 km

Sea



2.7 km

Schools




500 m

Contact us



Olga Dietrich

 (+357) 96701022

 o.dietrich@vivorealty.com.cy

