

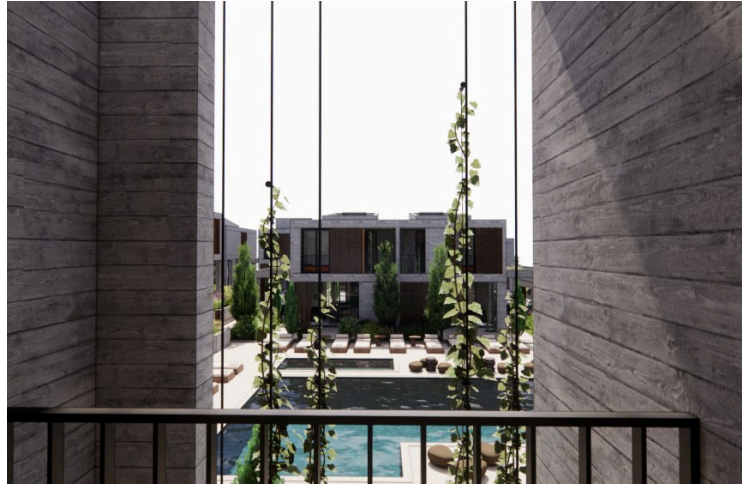
76184802

# STYLISH STUDIO BEDROOM APARTMENT IN EMBA

 Emba, Paphos

**€197,000** +VAT





# Overview

## Specifications

Bedrooms

 **Studio**

Bathrooms

 **1**

Covered

 **41 m<sup>2</sup>**

Type	<b>Apartment</b>
Showers	<b>1</b>
Toilets	<b>1</b>

Covered veranda	<b>12 m<sup>2</sup></b>
Status	<b>Off plan</b>

## Description

This new development in Emba represents a fresh chapter of contemporary residential design, combining bold architecture with urban style. Located along a central road but set slightly back from traffic, it offers the perfect balance of city convenience and peaceful living. The development also includes a selection of luxury villas, providing a variety of housing options in the same serene location.

### Studio Apartment Features:

Open-plan living and dining area with abundant natural light

Fully equipped kitchen with high-quality finishes

Private balcony or veranda for outdoor relaxation

Access to allocated parking and communal amenities

### Development Highlights:

Large communal swimming pool and kids' pool

Reception area, lobby, and sitting area for residents

Basement gym for an active lifestyle



# Additional information

## Facilities

Elevator

Gym

Parking, Covered

Pool, Communal

Sauna

## Features

Entrance gate

Pool bar

## Distances

Amenities

 1.2 km

Airport

 19 km

Sea

 2.7 km

Schools

 500 m

## Contact us



**Olga Dietrich**

 (+357) 96701022

 o.dietrich@vivorealty.com.cy

