



VIVO
REALTY

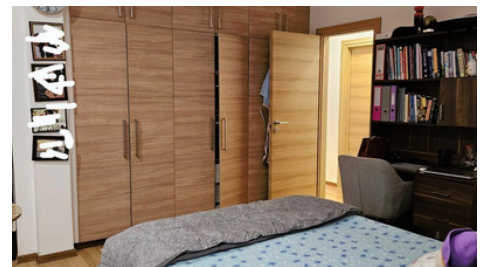
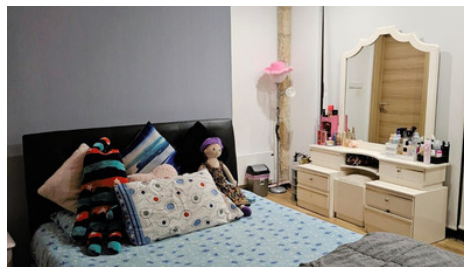


BEAUTIFUL FOUR BEDROOM VILLA FOR SALE IN SOUNI

 [Limassol, Souni-Zanakia](#)

70181601





Price	€500,000	Type	Detached Villa
Bedrooms	4	Bathrooms	3
Covered	162 m ²	Covered veranda	12 m ²
Uncovered veranda	22 m ²	Plot	505 m ²
Year of Construction	2021	Status	Resale
Energy efficiency rating	B+	Area	Limassol, Souni-Zanakia

Description

A beautiful four bedrooms Villa in a tranquil spot in Souni, with excellent mountain view, in a very quiet neighbourhood. It is close to amenities, Pharmacy and next to a park and green area.

It has a big beautiful garden with artificial grass all around and mature trees such as olive tree, banana tree, lemon tree, orange tree, carob tree, guava tree, pomegranate tree, moringa tree, curry leaves, roses and hibiscus. A big swimmingpool (3,6x7m), large veranda for relaxing and for children to play and even a water drilling.

The installation of a 5.3 kW photovoltaic system ensures for low electricity bills. The property is fully airconditioned and has electric heaters.

Ground floor:

There is a big open plan area with a kitchen and a dining area and a sitting area with a lovely bar. Also it offers a ground master bedroom with en suite shower. Addint to that there is a laundry/storage room and a quest WC.

First floor:

On this floor there are three bedrooms. Here you find the second master bedroom, which contains an en suite bathroom with bathtub.

Highlight of this room is that one of the walls is made of floor-to-ceiling windows, which makes the room very bright. Also on the other side there is access to a big balcony with view to the garden and pool area.

In addition there is a family bathroom.

The pool and garden area is fenced offering good privacy. It's a corner plot plus there is green area and a park on one side, so no direct neighbours.

For further informations and viewings, contact us.



Elena Lordjie
Property Consultant

✉ elord@vivorealty.com.cy

☎ (+357) 97744973

Facilities

Aircondition, Split system
Pool, Private
Landscaped garden
Solar photovoltaic panels

Heating, Central, Electric
Storage
Solar water heater

Features

Shower
Combined kitchen and dining area
Own water supply
Next to green area
Fitted wardrobes
Under stairs storage
Internal stairs
Corner
Mountain view
Double glazing
Veranda
Rental Potential
En suite Shower
Office
Kitchen appliances

Easy access to main roads
High ceilings
Connected to electric mains
Balcony
Entrance gate
Garden, large
Bright
Bar
Parquet flooring
Guest WC
Ground Floor Bedroom
En suite Bathroom
Modern design
Laundry room

Floor plans

