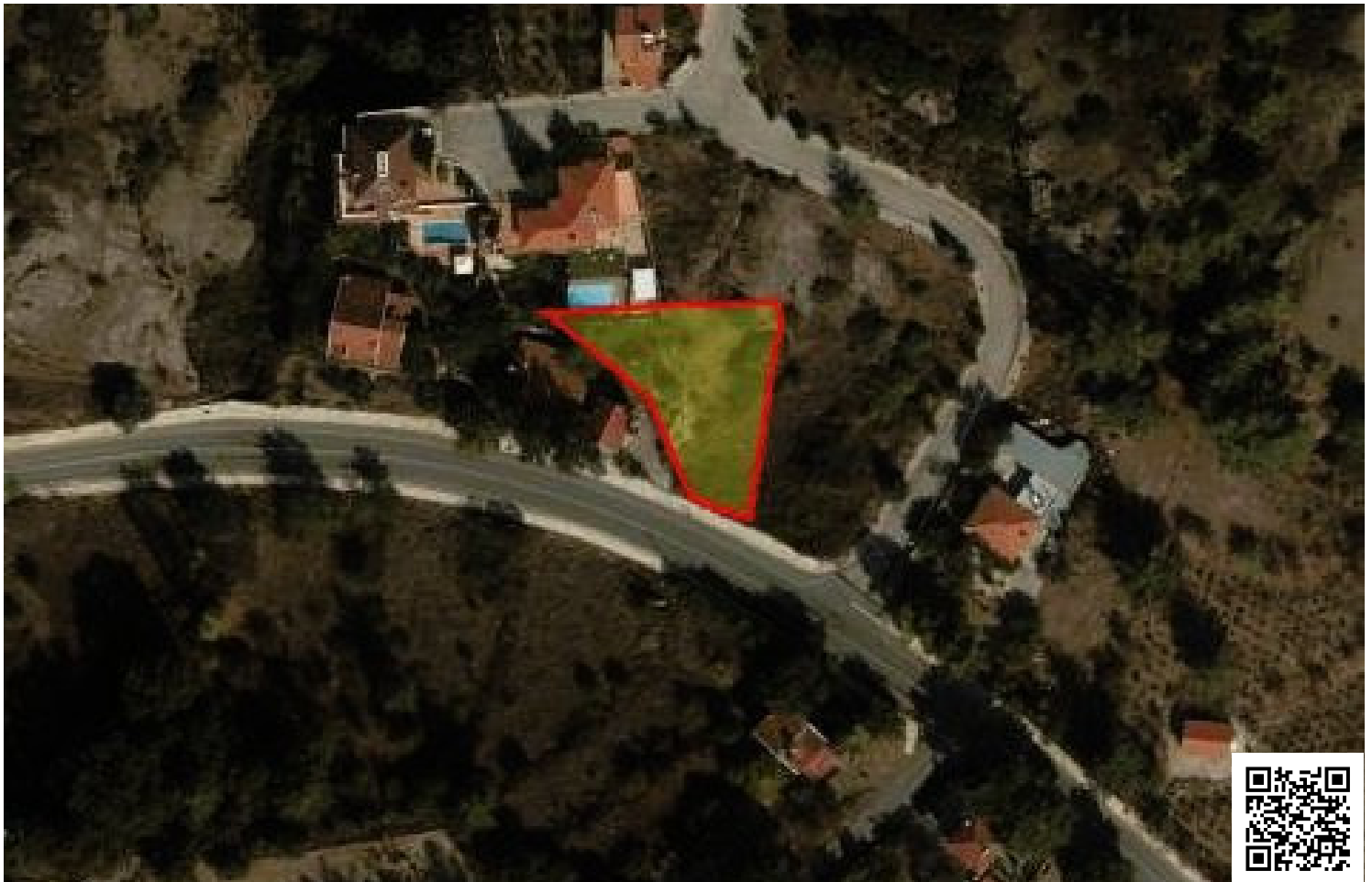


68180772

UNIQUE PLOT OF 718 SQM IN PERA PEDI

 Pera Pedi, Limassol

€110,000



Overview

Specifications

Area

 **718 m²**

Type

Building Plot

Title deed

Yes

Description

A unique residential plot of 718 sqm, its facade is on a registered road and it is connected to electricity and water. It has a coverage of 0.2%, a building factor of 0.3%, two floors are allowed up to 8.3 meters.

Pera pedi is just thirty minutes from Limassol, and five minutes from Platres village. It has a beautiful scenery, submerged into the forest area and a river passing through the whole village.

This is an amazing opportunity for a family to built a first house or for a country house.



Additional information

Features

Connected to electric mains

Country view

Easy access to highway

Easy access to main roads

Investment opportunity

Mountain view

Municipal water/sewage

Near amenities

Near bus route

Next to green area

Panoramic view

Prime land

Quiet area


Planning zones

Zone	Cover factor	Build factor	Max height	Max floors	Affected percentage
H5	0.2%	0.3%	8.3 m	2	-

Contact us



Office Properties

 (+357) 25871010

 info@vivorealty.com.cy

