

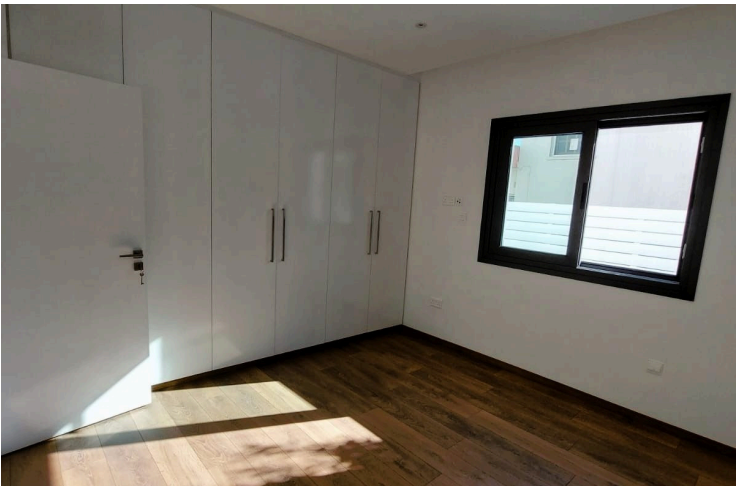
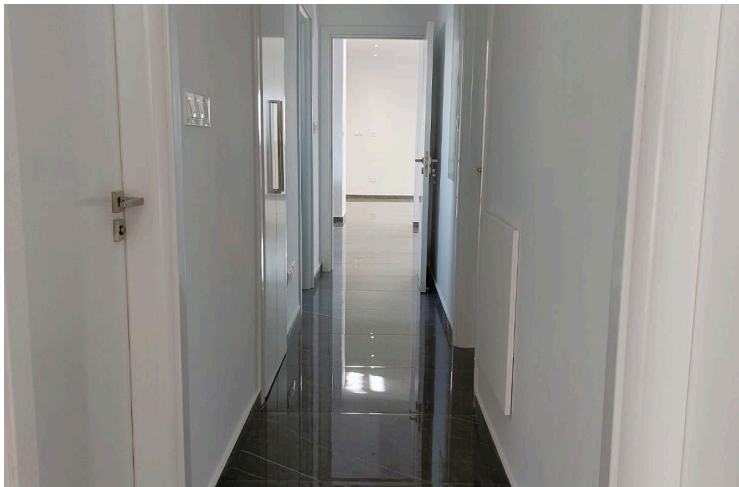
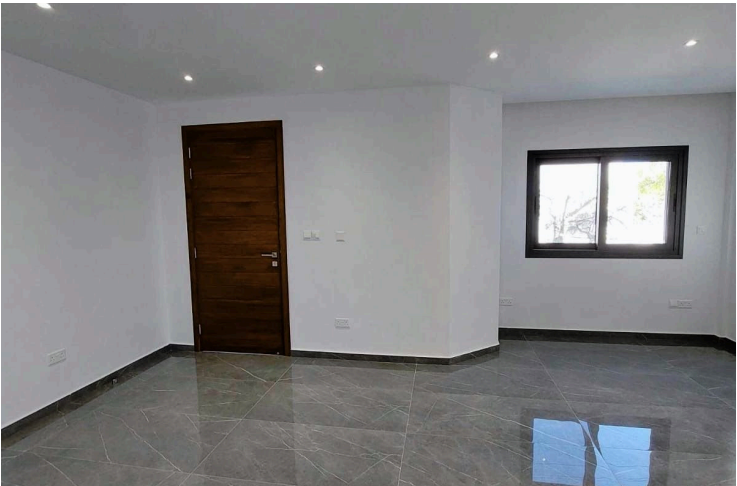
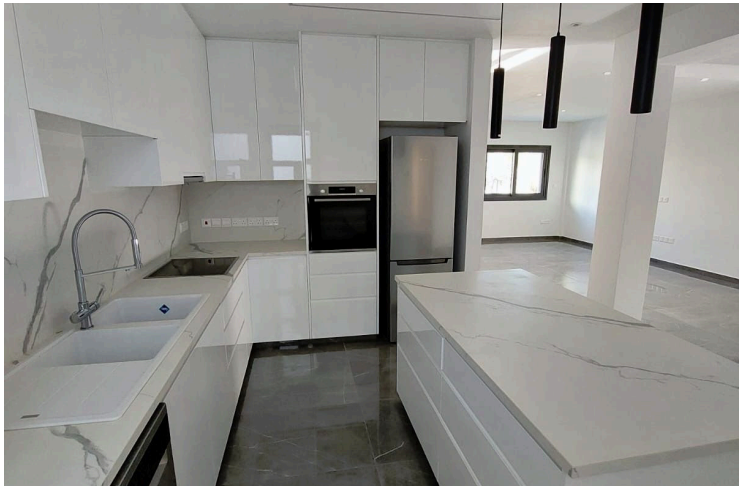
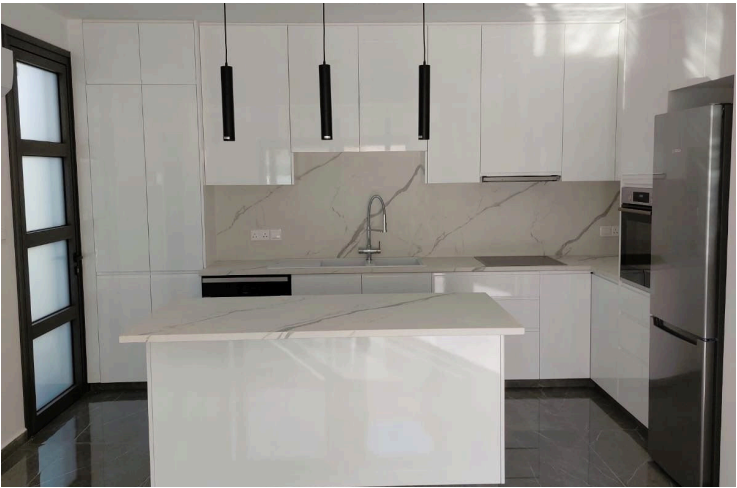
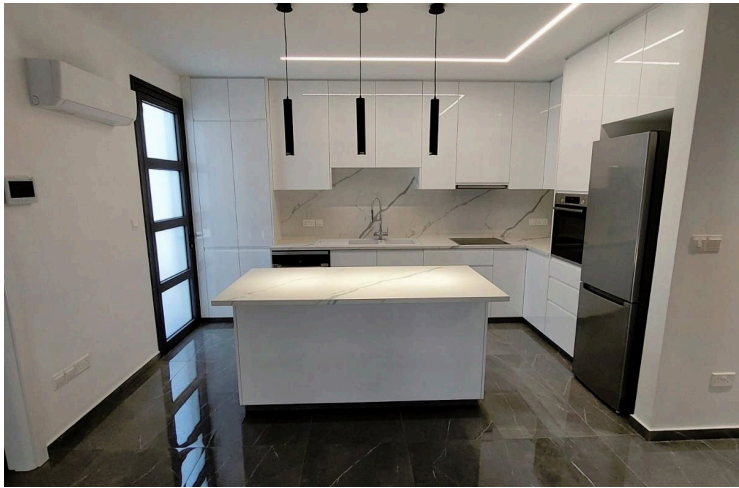
67180922

NEW MODERN THREE BEDROOM APARTMENT IN PANTHEA

 Panthea, Limassol

€2,500 /month ~~€2,700~~





Overview

Specifications

Bedrooms

 **3**


Bathrooms

 **2**

Covered

 **130 m²**

Type	Apartment
Showers	2
Toilets	3
Status	Key ready

Year of construction	2024
Furnished	Unfurnished
Energy efficiency rating	 A

Description

NEW MODERN THREE BEDROOM APARTMENT IN PANTHEA

- The three bedroom apartment is located on the ground floor, in a two floor building. It is in a peaceful and very quiet area in between Panthea and Agia Fyla area and is only 10 minutes away from The Grammar School and KΘ' Primary School (walking distance)/2 minutes by car.
- It consists of an open plan kitchen/living room, with 3 spacious bedrooms, 2 bathrooms and one guest W/C.
- The apartment offers appliances only (oven, stove, extractor fan, fridge, dishwasher, washing machine).
- All areas of the apartment are equipped with A/C.
- Parking
- A garden is also available that can be used by the tenants in accordance.
- Duration of lease: 2 years minimum

Additional information

Facilities

Aircondition, Split system

Parking, Covered

Features

Combined kitchen and dining area

Easy access to highway

Garden

Guest WC

Kitchen appliances

Shower

Distances

Amenities



2 km

Schools




900 m

Contact us



Natalia Pot

 (+357) 96071780

 npot@vivorealty.com.cy