

67180689

# TWO CONTEMPORARY BEDROOM APARTMENT IN AGIA FYLA

 Agia Fyla, Limassol

**€360,000** +VAT







# Overview

## Specifications

Bedrooms

 2


Bathrooms

 1

Covered

 85 m<sup>2</sup>

Type	Apartment
Showers	1
Toilets	1
Status	Under construction

Year of construction	2023
Furnished	Unfurnished
Energy efficiency rating	 A

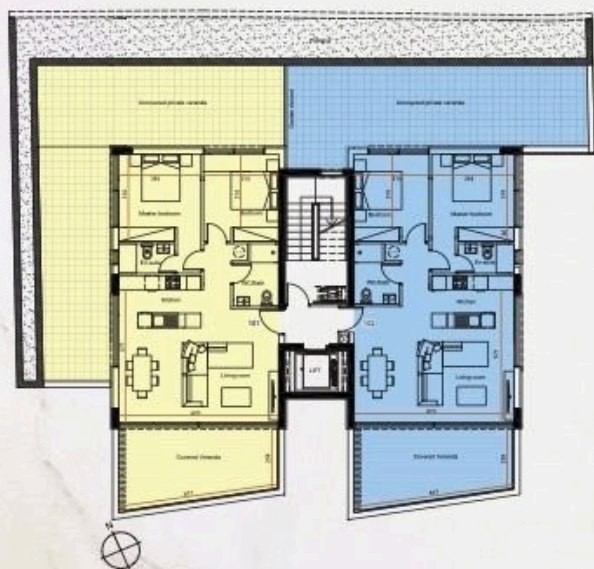
## Description

TWO CONTEMPORARY BEDROOM APARTMENT IN AGIA FYLA - IDEALLY DESIGNED FOR LUXURY AND PRIVACY

- The spacious two bedroom apartment is built in a Grade A efficient new contemporary complex, in Agia Fyla area, with unobstructed panoramic views of Limassol and the sea. Wonderfully located so that its residents enjoy the serenity of living in the outskirts of Limassol and the accessibility of it being just 5 km from the city centre and the sea.
- The apartment offers an Italian-made kitchen with soft closing systems to doors, drawers, a 3 way mixer system and provisions for all electrical appliances in the area.
- The bedrooms are also carefully constructed, with Italian-made bedroom wardrobes manufactured from high quality laminate, inclusive of shelving, rails and drawers. One of the bedrooms includes an en suite bathroom.
- The bathrooms of the apartment are built in high quality mechanisms and all include Italian-made fitted wall units. Additionally, high quality sanitary ware is installed to ensure the best for the tenant.
- To ensure privacy for the tenants, rabel ultra thin framed aluminium, double glazed glass windows, with full height for balconies are constructed. There are no shared walls between apartments, with a mix of exposed concrete and extra thick external brickwork and insulation (33cm), aiming to endure a modern aesthetic.
- An installation of full electrical and structured cabling network with TV points, in both the living room and bedrooms.
- Garden spaces of 45m2-65m2, will be created to blend with the views and aesthetic of the building, with



# Floor plans



**Flat 101**

<b>BEDS</b>	<b>2</b>
<b>BATHROOMS</b>	<b>2</b>
<b>PARKING SPACES</b>	<b>1</b>
<b>COVERED AREA</b>	<b>85</b>
<b>COVERED VERANDA</b>	<b>24</b>
<b>UNCONVERED VERANDA</b>	<b>65</b>
<b>STORE ROOM</b>	<b>4</b>
<b>TOTAL AREA</b>	<b>178</b>

**Flat 102**

<b>BEDS</b>	<b>2</b>
<b>BATHROOMS</b>	<b>2</b>
<b>PARKING SPACES</b>	<b>1</b>
<b>COVERED AREA</b>	<b>85</b>
<b>COVERED VERANDA</b>	<b>24</b>
<b>UNCONVERED VERANDA</b>	<b>45</b>
<b>STORE ROOM</b>	<b>4</b>
<b>TOTAL AREA</b>	<b>158</b>



**Flat 201**

<b>BEDS</b>	<b>2</b>
<b>BATHROOMS</b>	<b>2</b>
<b>PARKING SPACES</b>	<b>1</b>
<b>COVERED AREA</b>	<b>85</b>
<b>COVERED VERANDA</b>	<b>24</b>
<b>UNCONVERED VERANDA</b>	<b>-</b>
<b>STORE ROOM</b>	<b>4</b>
<b>TOTAL AREA</b>	<b>113</b>

**Flat 202**

<b>BEDS</b>	<b>2</b>
<b>BATHROOMS</b>	<b>2</b>
<b>PARKING SPACES</b>	<b>1</b>
<b>COVERED AREA</b>	<b>85</b>
<b>COVERED VERANDA</b>	<b>24</b>
<b>UNCONVERED VERANDA</b>	<b>-</b>
<b>STORE ROOM</b>	<b>4</b>
<b>TOTAL AREA</b>	<b>113</b>

# Additional information

## Facilities

Aircondition, Provision

Solar photovoltaic panels

Heating, Provision

Solar water heater

Parking, Covered

Storage

## Features

Ceramic tiles

En suite shower

Garden

Near bus route

City view

Fire detector

Modern design

Sea view

Double glazing

Fitted wardrobes

Near amenities

Veranda

## Distances

Amenities

 500 m

Airport

 60 km

Sea

 5 km

Public transport

 1 km


Schools

 3 km

## Contact us



**Office Properties**

 (+357) 25871010

 [info@vivorealty.com.cy](mailto:info@vivorealty.com.cy)