



**VIVO**  
REALTY



## THREE BEDROOM APARTMENT IN NEW LUXURY COMPLEX IN P. GERMASOYEIAS

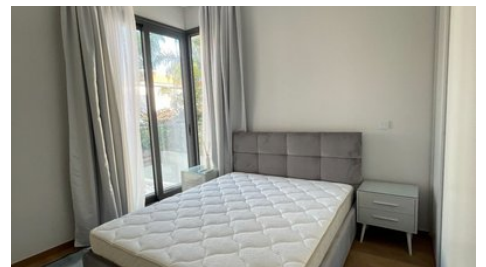
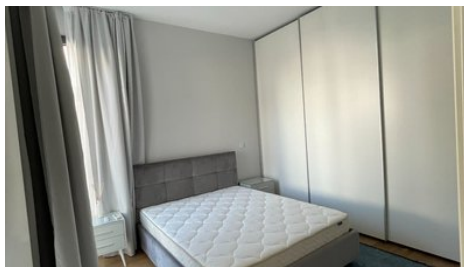
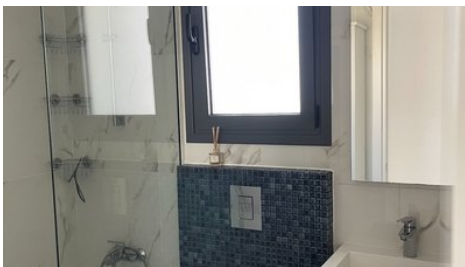
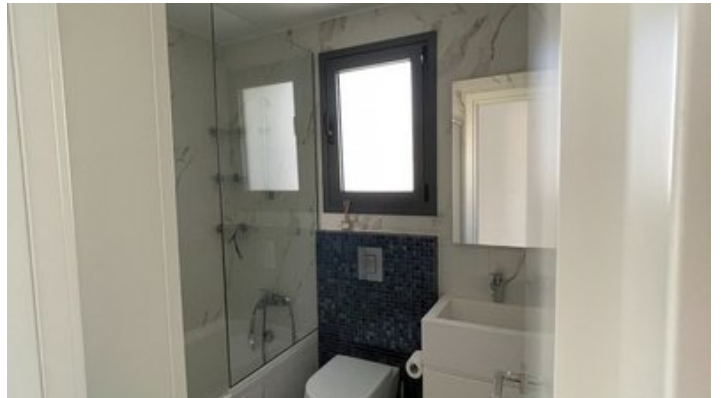
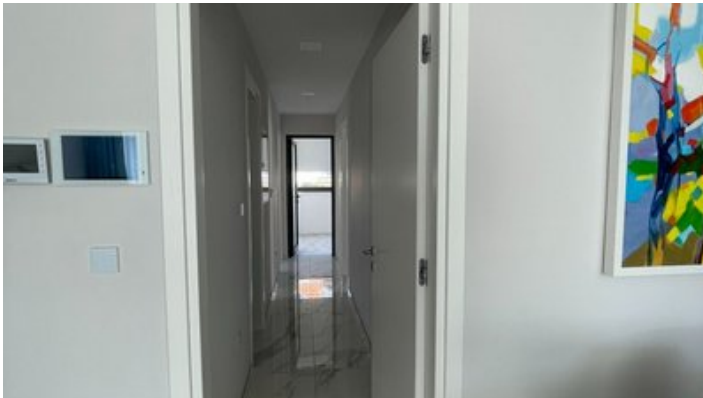
 [Limassol, Potamos Germasogeias](#)

**67180635**



VIVO  
REALTY

vivorealty.com.cy



<b>Rent</b>	€3,600 /month	<b>Type</b>	Apartment
<b>Bedrooms</b>	3	<b>Bathrooms</b>	2
<b>Covered</b>	153 m <sup>2</sup>	<b>Year of Construction</b>	2022
<b>Status</b>	Key ready	<b>Energy efficiency rating</b>	A
<b>Floor</b>	1 / 4	<b>Area</b>	Limassol, Potamos Germasogeias

---

## Description

MODERN THREE BEDROOM APARTMENT IN P. GERMASOYEIAS - CLOSE TO THE SEA

- Situated in the Germasoyia area, this three-bedroom apartment is conveniently close to the seaside and is a part of a new luxury complex, with the only apartment on its floor. The design follows a modern style, providing all the essential features for comfortable living.
- The kitchen and dining area are designed to create a vibrant, comfortable atmosphere. The infusion of colour aims to add a touch of individuality to the home, and all furnishings in this space are sourced from a high-end store to ensure the best for the tenant.
- All three bedrooms are strategically positioned to capture natural light, enhancing the overall brightness of the rooms. One of the bedrooms features an en suite bathroom and a compact walk-in closet for added convenience.
- The apartment offers two verandas and one balcony with furniture to offer a nice outside sitting area to enjoy the quiet area around.
- VRV air conditioning, water filter and water heating floor
- Storage room



### Office Properties

Office Administrator

✉ info@vivorealty.com.cy  
☎ (+357) 25871010

## Facilities

Aircondition, Split system

Elevator

Gated complex

Heating, Underfloor

Storage

---

## Features

Bath

Easy access to main roads

Balcony

Walk-in closet

Quiet Area

Modern design

Near amenities

Shower

Combined kitchen and dining area

Fitted wardrobes

Veranda

En suite Bathroom

Near bus route

---

## Distances

**Amenities**

500 m

**Sea**

500 m