

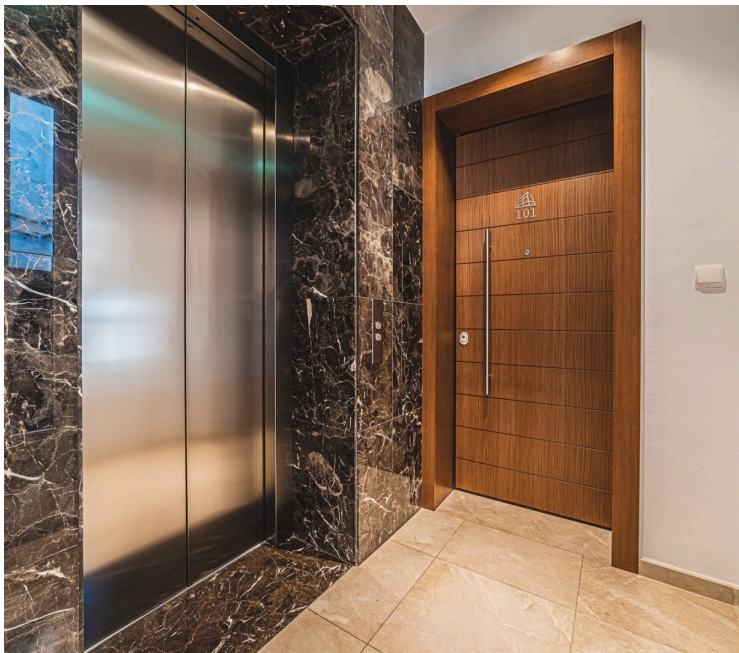
66178583

APARTMENT FOR SALE IN THE HEART OF LIMASSOL

 Agias Zonis, Limassol

€470,000 +VAT





Overview

Specifications

Bedrooms

 2


Bathrooms

 1

Covered

 82 m²

Type	Apartment
Showers	1
Toilets	2

Status	Key ready
Furnished	Unfurnished
Energy efficiency rating	 A

Description

This complex is located in a quiet residential neighborhood in the heart of Limassol and includes 6 two- and three-bedroomed apartments as well as 2 luxurious penthouses with private roof gardens. The modern and elegant architecture, cozy planning solutions, and top-of-the-line finishes will pleasantly surprise those who value true comfort and style. Parquet floors, marble in bathrooms, expensive kitchen cabinets and wardrobes, high ceilings of 3.15 meters, central VRV air-conditioning and water underfloor heating are only part of the extensive list of features the units will have. The central location of the project in the active part of Limassol will provide easy access to city amenities and business infrastructure: shopping streets, high-class business centers, supermarkets, pharmacies, restaurants, and schools (Foley's and Grammar School).

Major benefits:

- only 8 apartments;
- center of Limassol, close to city amenities, business centers, and schools;
- 10 minutes walk to the best beaches;
- gated community with covered parking;
- luxury finishes: parquet flooring, marble in bathrooms, expensive windows, and built-in furniture;
- high ceilings (3.15 m);
- safety entrance door;
- VRV central air-conditioning and water underfloor heating;
- spacious verandas;
- within walking distance to the sandy Olympion beach, Limassol Marina, Old Town with the medieval Limassol castle, Cyprus University of Technology, Anaxartisias shopping street and Molos promenade, which is one of the most popular places for family fun.

Floor plans

2 von 5



Additional information

Facilities

Aircondition, Split system

Heating, Underfloor

Elevator

Parking, Covered

Gated complex

Storage

Features

Bath

City view

Easy access to main roads

Fitted wardrobes

High ceilings

Marble flooring

Near bus route

Shower

Bathroom underfloor heating

Combined kitchen and dining area

En suite shower

Fly screens

Kitchenette

Modern design

Quiet area

Thermal insulation

Bright

Double glazing

Entrance gate, automated

Heart of city center

Luxury specifications

Near amenities


Semi-solid parquet flooring

Veranda, large

Contact us



Office Properties

 (+357) 25871010

 info@vivorealty.com.cy