

66178212

LUXURY THREE BEDROOM PENTHOUSE IN TOURIST AREA

 Potamos Germasogeias, Limassol

€1,200,000 +VAT





Overview

Specifications

Bedrooms

 3


Bathrooms

 3

Covered

 119.2 m²

Type	Apartment
Showers	1
Toilets	3
Status	Under construction

Year of construction	2021
Furnished	Unfurnished
Energy efficiency rating	 A

Description

Three bedroom penthouse in a luxury residential complex located in potamos Germasogeia tourist area of Limassol, 700 meters from the sea.

The complex consists of two identical four-story blocks of 19 apartments each.

Each block has three 3 bedroom, seven 2 bedroom and six 1 bedroom apartments.

In addition it features four penthouses on the top floor - one 3 bedrooms and three 2 bedrooms. Two penthouses have access to their own glorious open air entertainment on the roof top garden.

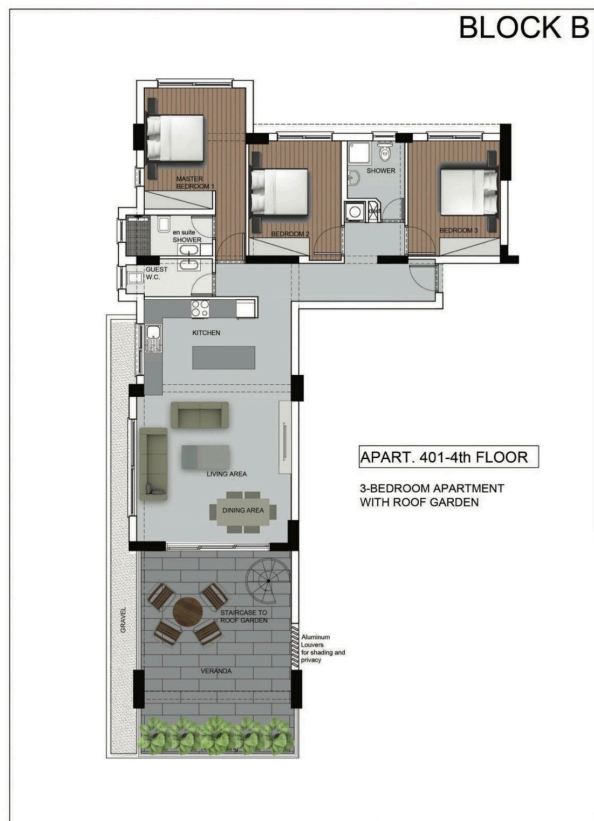
The complex has its own swimming pool, a fenced playarea for kids, as well as a fully equipped sports complex, helth center and SPA.

The Luxury three bedroom penthaus , offers 3 bright bedrooms with fitted wardrobes one en-suite bath and access to the beautiful Veranda with a private access to the roof garden with a barbecue area and jacuzzi provision, one main bathroom with a shower and a guest toilet.

Open plan Kitchen, living area with also access also to the big covered veranda.

feel free to contact us for any additional information you may need.

Floor plans



Additional information

Facilities

Aircondition, Split system

Gated complex

Landscaped garden

Pool, Communal

Storage

Childrens playground

Gym

Outdoor shower

Sauna

Elevator

Heating, Underfloor

Parking, Covered

Spa

Features

Barbeque

Bright

Easy access to highway

Entrance gate, automated

High ceilings

Mountain view

Quiet area

Sound insulation

Bath

Combined kitchen and dining area

Easy access to main roads

Fitted wardrobes

Luxury specifications

Near amenities

Roof garden

Veranda, large

Bathroom underfloor heating

Double glazing

En suite bathroom

Guest WC

Modern design

Next to green area


Shower

Walking distance to beach

Contact us



Natalia Pot

 (+357) 96071780

 npot@vivorealty.com.cy