



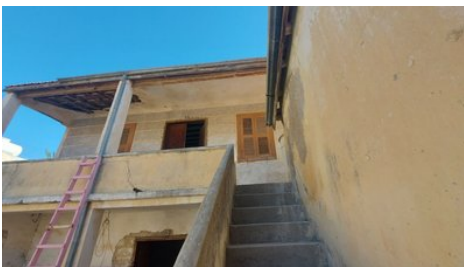
VIVO
REALTY



LISTED PROPERTY IN THE CENTER OF PISSOURI VILLAGE

 [Limassol, Pissouri](#)

65178197



Price	€230,000	Type	Detached Villa
Bedrooms	4	Covered	103 m ²
Plot	247 m ²	Title deed	Yes
Status	Resale	Energy efficiency rating	G
Area	Limassol, Pissouri		

Description

This traditional house is situated in the center of picturesque Pissouri village next to all necessary amenities. It comes with land area of 247sqm.

Uniqueness of this asset is that it is a listed property, which allows the potential purchaser to apply for certain financial support for restoration of the property,

There are 2 buildings on the plot with a quite spacious courtyard. The buildings have 2 floors each.
Zone H1 with the density 120% and coverage 70%. There is a possibility to build 3 floors with the height 11.4m.

There is a possibility to arrange the restaurant on the first floor

A great opportunity to arrange a business like a guest house in the center of one of the most beautiful villages in Cyprus. It is only 5-7 minutes drive to the Blue Flag Beach next to Columbia Beach resort! The quiet not crowded place with really beautiful sunrises and sunsets!

Paphos airport - 28 km

Larnaca airport - 100 km

Limassol - 38 km

Paphos - 32 km

Petra Tou Romiou (Aphrodite Birthplace) - 9 km

Golf Courses of Aphrodite Hills - 12 km

Specific property has a lot of potential!



Office Properties

Office Administrator

✉ info@vivorealty.com.cy

☎ (+357) 25871010

Features

Heart of city center

Municipal water/sewage

Courtyard

Near amenities

Easy access to main roads

Entrance gate

Rental Potential

Indoor Fireplace