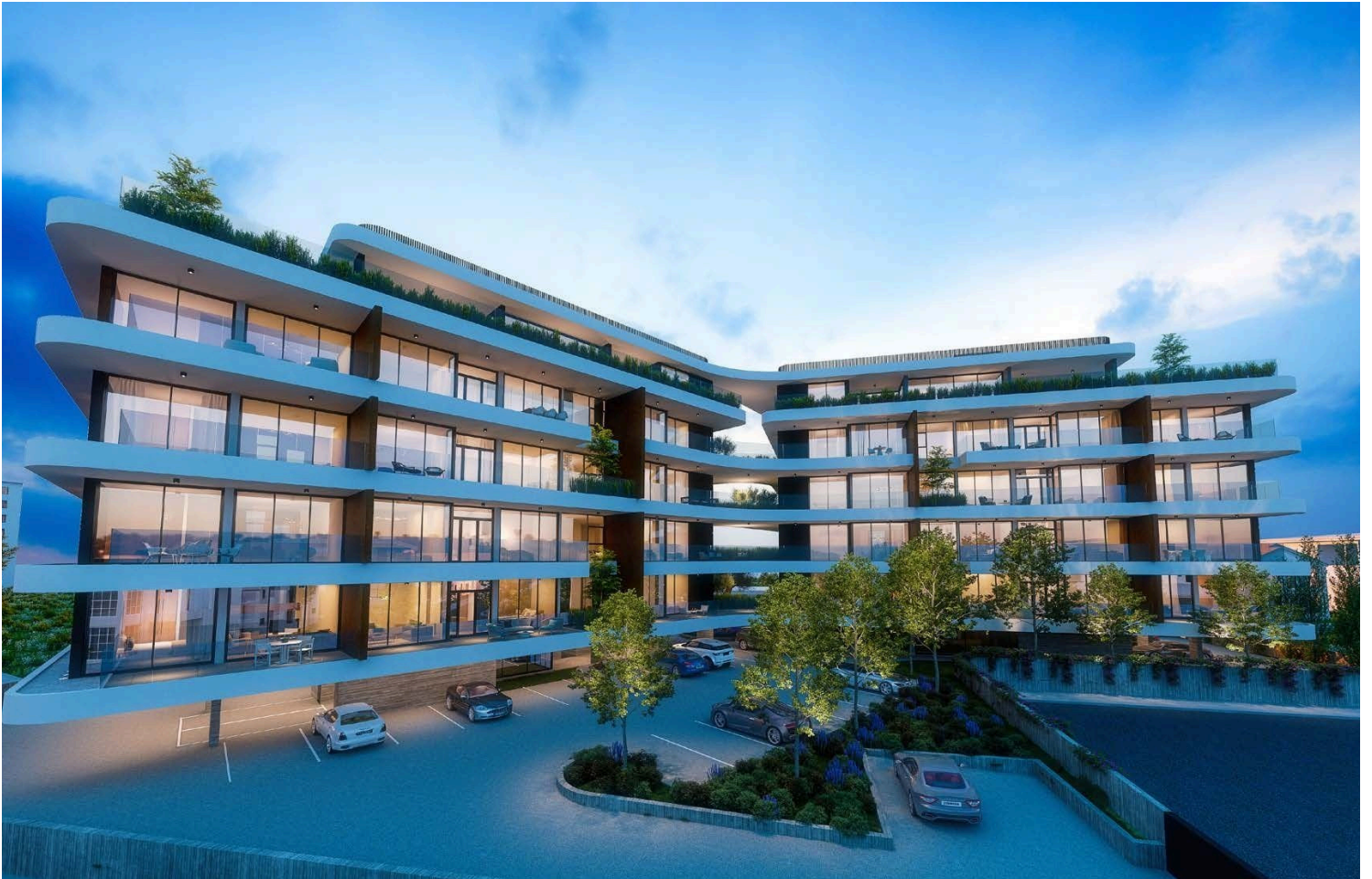


65177936

# BRAND NEW 3 BEDROOM APARTMENT IN MESA GEITONIA

 Mesa Geitonia, Limassol

**€532,875** +VAT







# Overview

## Specifications

Bedrooms

 **3**


Bathrooms

 **1**

Covered

 **151 m<sup>2</sup>**

Type	<b>Apartment</b>
Showers	<b>1</b>
Toilets	<b>3</b>
Status	<b>Key ready</b>

Year of construction	<b>2021</b>
Furnished	<b>Unfurnished</b>
Energy efficiency rating	 <b>A</b>

## Description

Proudly presenting you new project on the map of Limassol, Mesa Geitonia area. The building is a contemporary development situated in a quiet residential area at the Centre of Limassol, within easy reach of the beach and city center. All the city facilities are close and easily accessible.

The Project delivery is planned for middle of October 2021.

The proposed apartment is situated in Block A on the 1st floor.

Total covered area: 118 sqm. There is a covered veranda 33 sqm and storage room 5.2 sqm.

The apartment consists of 3 bedrooms, large veranda, 1 guest WC, 1 bathroom and toilet and 1 ensuit shower with toilet in the masterbedroom.

There are 26 apartments within two buildings each with a separate entrance. Each building consists of 12 apartments in the first four floors (2 2-bedroom and 1 3-bedroom apartments on each floor) and a 3-bedroom penthouse with roof garden and swimming pool on the fifth floor.

Each apartment has one parking space and a storage area.

The buildings are designed in such a manner, so that every apartment is southern facing and most of them have sea view. The south / southeast orientation of the buildings, does not only offer the best view possible, but also enhances energy efficiency, allowing for natural controlled lighting and minimizing the need for mechanical heating and cooling during winter and summer.

TECHNICAL SPECIFICATIONS:



# Floor plans



# Additional information

## Facilities

Aircondition, Provision

Heating, Provision

Elevator

Parking, Covered

Gated complex

Solar water heater

## Features

Bath

City view

Easy access to highway

Entrance gate

Heart of city center

Modern design

Quiet area

Veranda, front

Bright

Combined kitchen and dining area

Easy access to main roads

Fitted wardrobes

High ceilings

Near amenities

Rental potential

CCTV (provision)

Double glazing

En suite shower

Guest WC

Luxury specifications


Near bus route

Shower

## Contact us



### Office Properties

 (+357) 25871010

 [info@vivorealty.com.cy](mailto:info@vivorealty.com.cy)