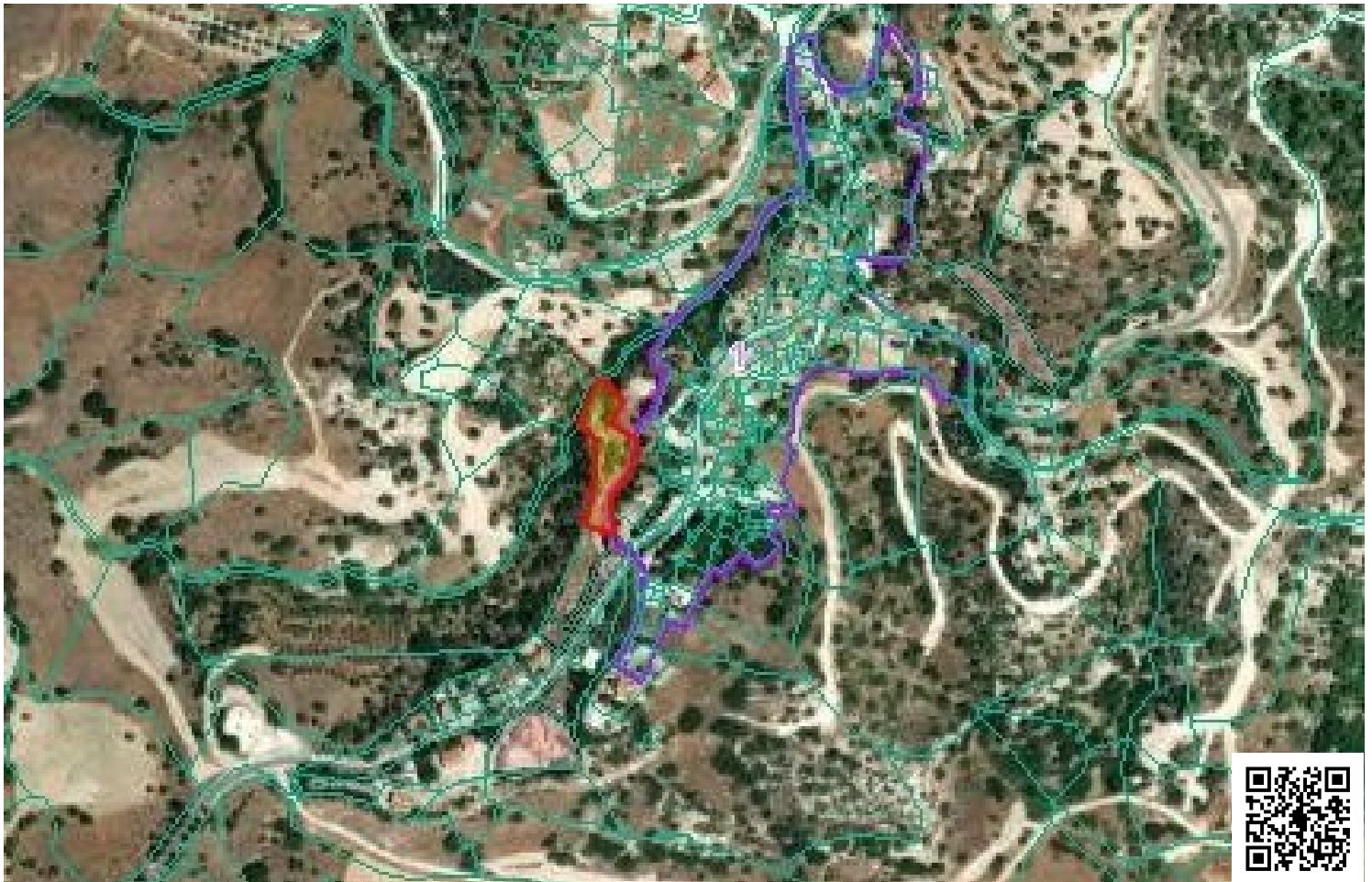


65177667

# RESIDENTIAL PLOT 1673 SQM IN PANO ARCHIMANDRITA, PAPHOS AREA

 Pano Archimandrita, Paphos

€55,000



# Overview

## Specifications

Area

 **1673 m<sup>2</sup>**

Type

**Building Plot**

Title deed

**Yes**

## Description

Residential plot of 1673sqm is available in Pano Archimandrita village in Paphos area with a beautiful view. Archimandrita, a village of the Pafos District, is built in a green landscape and is crossed by the side-rivers “Chapotami” and “Diarizos”. The community is approximately 14 kilometres away from Kouklia, also a village of the Pafos District, and 6 kilometres from Dora, a village of the Lemesos District.

H2 zone with building density 90% , coverage 50% with the possibility to build 2 floors 8.3 m height.

There is access to water and electricity.



# Additional information

## Planning zones

Zone	Cover factor	Build factor	Max height	Max floors	Affected percentage
H2	50%	90%	8.3 m	2	-

## Contact us



### Office Properties

 (+357) 25871010

 [info@vivorealty.com.cy](mailto:info@vivorealty.com.cy)

