



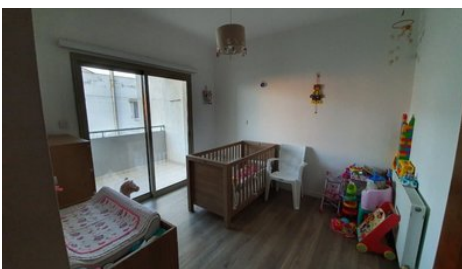
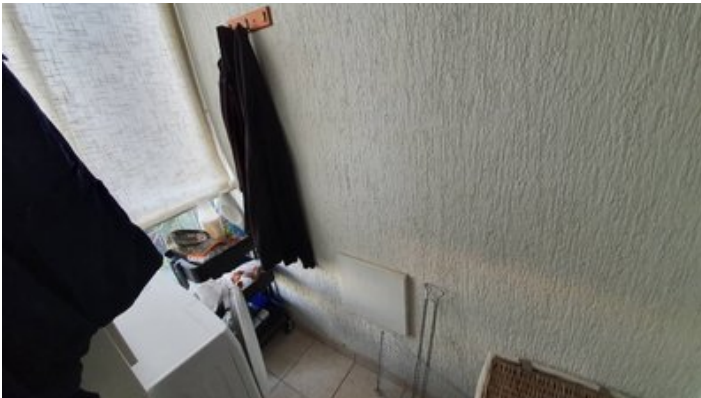
**VIVO**  
REALTY



## SPACIOUS 3 BEDROOM APARTMENT IN MESA GEITONIA

 [Limassol, Mesa Geitonia](#)

**65177059**



|                        |                         |                |                    |
|------------------------|-------------------------|----------------|--------------------|
| <b>Price</b>           | €270,000 €280,000       | <b>Type</b>    | Apartment          |
| <b>Bedrooms</b>        | 3                       | <b>Covered</b> | 115 m <sup>2</sup> |
| <b>Covered veranda</b> | 15 m <sup>2</sup>       | <b>Status</b>  | Resale             |
| <b>Area</b>            | Limassol, Mesa Geitonia |                |                    |

## Description

Absolutely great 3 bedroom apartment of total area 130 sqm is available for sale in Mesa Geitonia area, Limassol. The building is very well maintained. It is situated in a quiet residential area close to Spyrou Kyprianou avenue. The location is near all needed amenities: schools, offices, kindergartens, shops, pharmacies, kiosks, supermarkets etc. It has an easy access to all of the main roads.

Short description: upon entering there is a spacious living room connected with dining area and entrance to a large veranda, separate kitchen area has an access to a small storage room. There are 2 bedrooms and 1 playroom, which can be transformed to the 3rd bedroom if needed.

The apartment has a lot of space and light. The buildings around the apartment are at lower level, which provides the views out of all of the windows.

Central heating is in all rooms (including bathroom), except 1 playroom, there are a/c everywhere, solar water heater. Mosquito nets are on all windows as well as blinds. There is a fan on the veranda.

Covered parking space and storage are available for this apartment

For any additional information, please, don't hesitate to contact us



### Daria Gorbacheva

Property Consultant

✉ admin@vivorealty.com.cy

☎ (+357) 25871010

## Facilities

Aircondition, Provision

Parking, Covered

Storage

Heating, Central

Elevator

Solar water heater

---

## Features

Shower

Easy access to main roads

Spacious rooms

Bright

Double glazing

Roller Blinds

Rental Potential

Near amenities

Separate dining area

Easy access to highway

Connected to electric mains

Laminate flooring

Veranda

Quiet Area

Near bus route

Kitchen appliances