



VIVO
REALTY

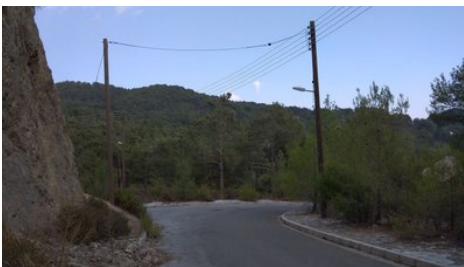


RESIDENTIAL PLOT FOR SALE IN PANO PLATRES 997 SQ M

 [Limassol, Pano Platres](#)

65176434





Price	€120,000 +VAT	Type	Building Plot
Plot	997 m ²	Title deed	Yes
Area	Limassol, Pano Platres		

Description

The Residential land of 997 sq m located in Pano Platres is available for sale. H7 residential planning zone which at the time of listing, allows for 15% of build density, 15% of build cover, 2 maximum number of floors and 8,3m maximum building height. There is a direct access to the road from one side of the plot.

Pano Platres is a mountainous village in Cyprus. It is located on the southern slopes of the Troodos Mountains and is one of the wine villages. Platres is the largest Troodos resort, situated about 5km from Troodos Square, 25 kilometers (16 mi) north-west of Limassol and 45 kilometers (28 mi) south-west of the capital Nicosia. Platres is a very old village and is mentioned among the 119 villages of the Limassol district that existed during the Lusignan Era (1192-1489 AD) and the Venetian Era (1489-1571 AD). Platres is the principal hill resort of Cyprus.



Office Properties

Office Administrator

✉ info@vivorealty.com.cy
☎ (+357) 25871010

Zones

Zone	Cover factor	Build factor	Max height	Max floors	Affected percentage
Res	15%	15%	8.3 m	2	