

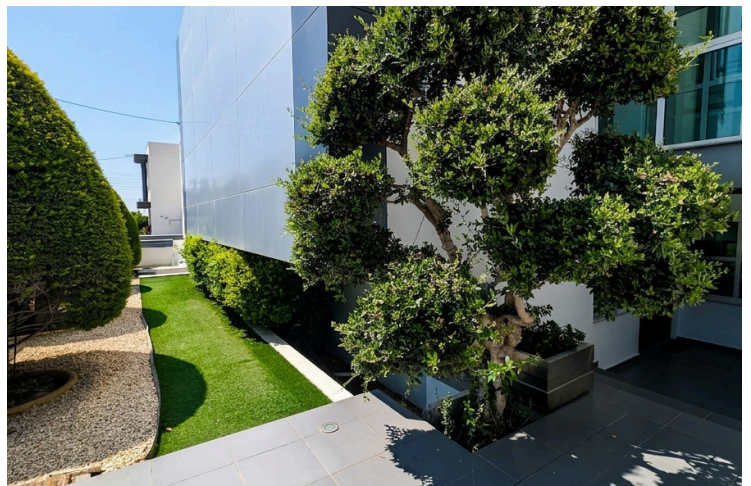
64185663

# ELEGANT VILLA WITH SWIMMING POOL IN EPISKOPI LIMASSOL

 Episkopi, Limassol

**€3,500** /month





# Overview

## Specifications

Bedrooms

 3


Bathrooms

 1

Covered

 217 m<sup>2</sup>

Type	<b>Detached Villa</b>
Showers	<b>3</b>
Toilets	<b>3</b>
Plot	<b>599 m<sup>2</sup></b>

Year of construction	<b>2016</b>
Furnished	<b>Fully furnished</b>
Energy efficiency rating	 <b>B+</b>

## Description

Located in the peaceful residential area of Episkopi, Limassol, this beautifully maintained villa offers an ideal combination of comfort, privacy, and convenience. Situated close to all essential amenities with easy access to the main road network and highway, the property is just a short drive from the stunning sandy beaches of Kourion.

Set on a generous 500 sq.m. plot, the residence features a landscaped garden, private swimming pool, and BBQ area, creating the perfect setting for outdoor living and entertaining.

The ground floor comprises a spacious open-plan living and dining area, a fully equipped modern kitchen with direct access to the backyard, a separate laundry room, and a guest WC.

The upper floor hosts a generously sized master bedroom featuring a walk-in wardrobe, en-suite bathroom, and access to a covered balcony offering beautiful sea views. Two additional well-proportioned bedrooms and a family bathroom complete this level.

Property Features:

- \* 500 sq.m. plot
- \* Private swimming pool
- \* Landscaped garden
- \* BBQ area
- \* 3 bedrooms
- \* Master bedroom with walk-in wardrobe and en-suite bathroom
- \* Covered balcony with sea views



# Additional information

## Facilities

Aircondition, Split system	Heating, Central	Landscaped garden
Outdoor shower	Parking, Covered	Pool, Private
Solar photovoltaic panels	Solar water heater	Storage


## Features

Alarm system	Balcony	Balcony, back
Barbeque	Bath	Bicycle parking
Bright	Combined kitchen and dining area	Double glazing
Easy access to highway	Easy access to main roads	En suite shower
Energy efficient doors/windows	Entrance gate	Fitted wardrobes
Fly screens	Garden	Guest WC
High ceilings	Internal stairs	Kitchen appliances
Marble flooring	Municipal water/sewage	Near amenities
Near bus route	Openings in opposite sides	Painted
Pressurized water system	Quiet area	Roller blinds
Sea view	Solitary	Sound insulation
Spacious rooms	Thermal insulation	Under stairs storage
Utility room	Veranda	Veranda, back
Walk-in closet	Wooden flooring	

## Contact us



**Tatiana Kirshanova**

 (+357) 96071790

 [tatianak@vivorealty.com.cy](mailto:tatianak@vivorealty.com.cy)

