

64185649

BRAND NEW TWO BEDROOM APARTMENT IN ZAKAKI LIMASSOL

 Zakaki, Limassol

€325,000 +VAT





Overview

Specifications

Bedrooms

 2


Bathrooms

 1

Covered

 78 m²

Type	Apartment
Showers	1
Toilets	2
Covered veranda	24 m²
Status	Completed

Year of construction	2026
Furnished	Unfurnished
Structure	Concrete
Energy efficiency rating	 Certificate expected

Description

Located in the highly sought-after residential area of Zakaki, Limassol, this contemporary apartment offers an excellent combination of comfort, convenience, and investment potential. The property enjoys a quiet setting while being just minutes away from key amenities, including My Mall Limassol, the New Port, the City of Dreams Mediterranean Resort, and providing easy access to the city center and highway network.

Situated on the 1st floor of an exclusive low-rise residential development, the apartment is part of a brand-new project scheduled for completion and delivery in September 2026.

The property features a bright open-plan living and dining area that seamlessly connects to a spacious covered veranda, creating an ideal space for both relaxation and entertaining. The modern open-plan kitchen complements the living space, while two well-proportioned bedrooms provide comfortable accommodation. The apartment also includes a family bathroom and a separate guest WC.

Additional benefits include a covered parking space and a private storage room.

Key Features:

- * Prime location in Zakaki, Limassol
- * Brand-new development – delivery September 2026
- * 2 comfortable bedrooms
- * Open-plan kitchen, living and dining area
- * Spacious covered veranda



Floor plans

1ST FLOOR

APARTMENT 101

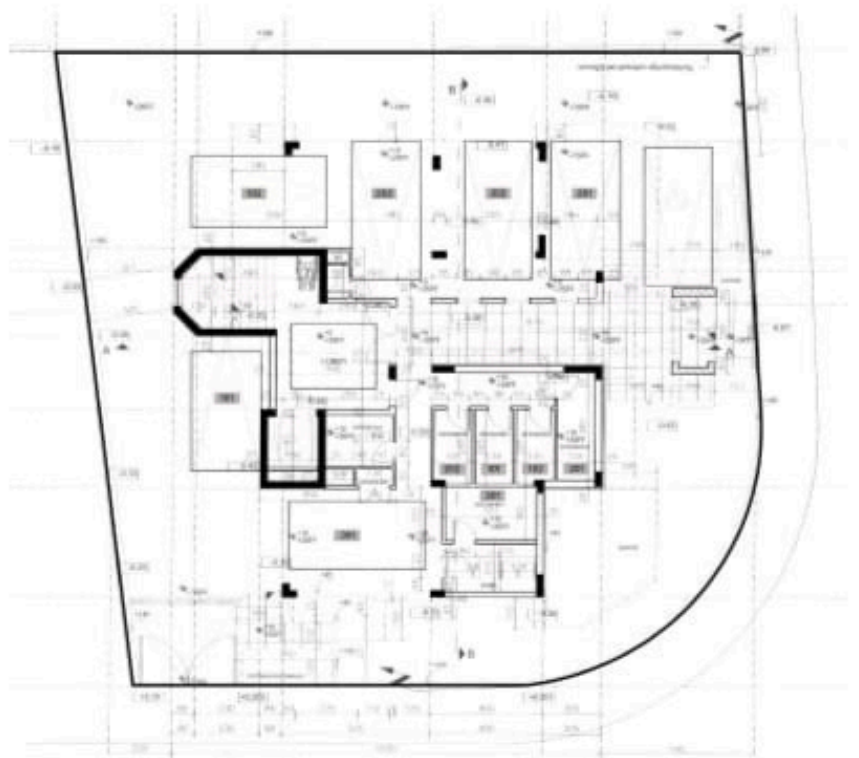
- Cover area - 78 sq.m
- Veranda - 24 sq.m
- Common area - 15 sq.m
- Included storage and cover parking

APARTMENT 102

- Cover area - 78 sq.m
- Cover veranda - 28 sq.m
- Common area - 15 sq.m
- Included storage and cover parking



GROUND FLOOR



Additional information

Facilities

Aircondition, Split system

Elevator

Parking, Covered

Solar photovoltaic panels

Solar water heater

Storage

Features

Bright

City view

Combined kitchen and dining area

Connected to electric mains

Corner

Double glazing

Easy access to highway

Easy access to main roads

Energy efficient doors/windows

Entrance gate, automated

Fireproof entrance doors

Fitted wardrobes

Floor-to-ceiling windows

Guest WC

Internal stairs

Kitchen island

Laminate flooring

Near amenities

Near bus route

Pressurized water system

Quiet area

Rental potential

Shower

Shutters, electric (provision)

Sound insulation

Thermal insulation

Tile flooring

Veranda, front

Contact us



Tatiana Kirshanova

 (+357) 96071790

 tatianak@vivorealty.com.cy

