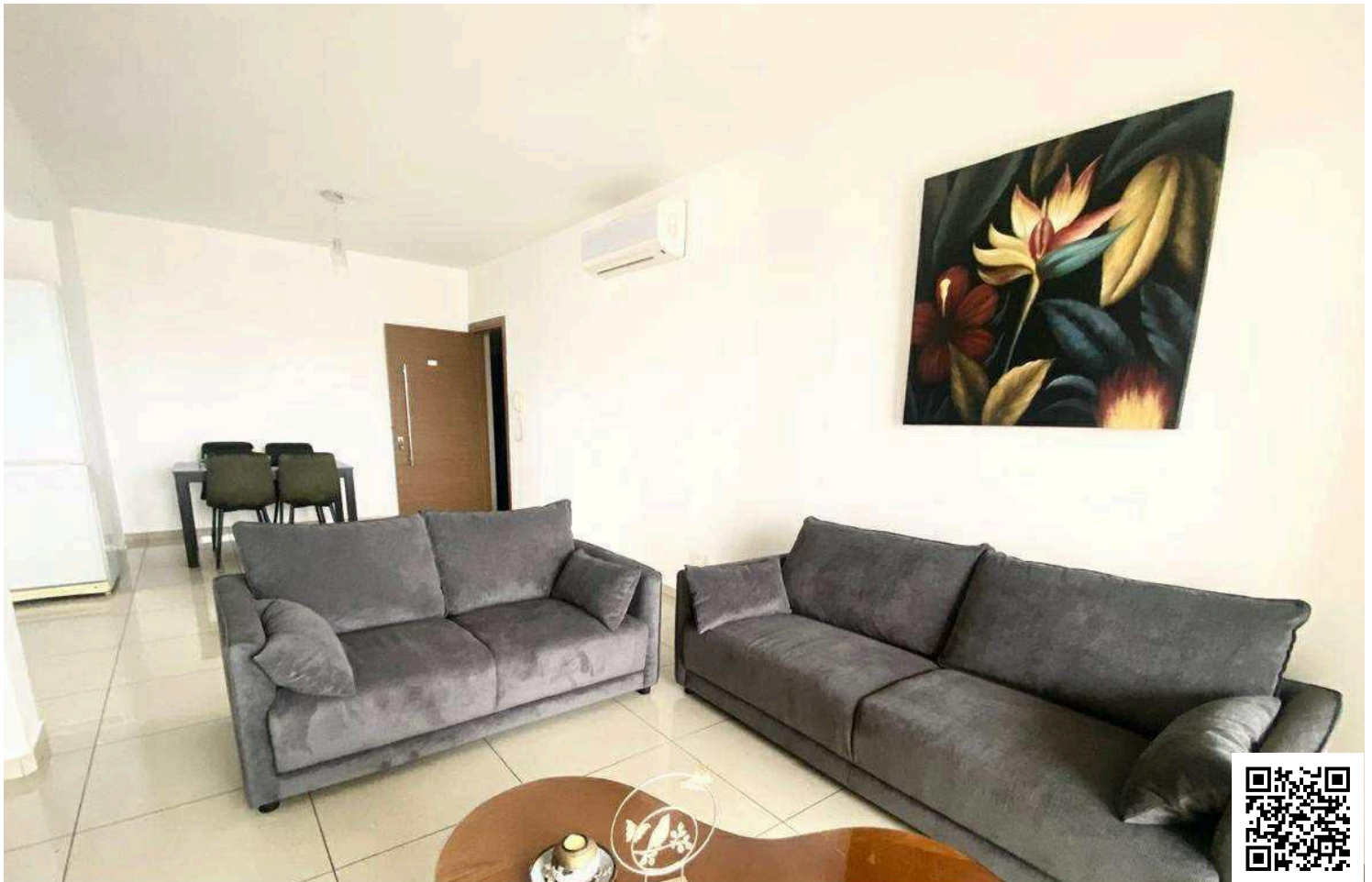


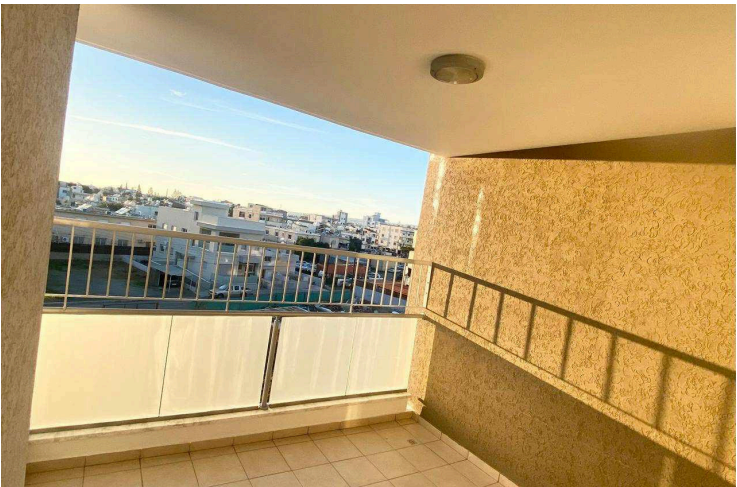
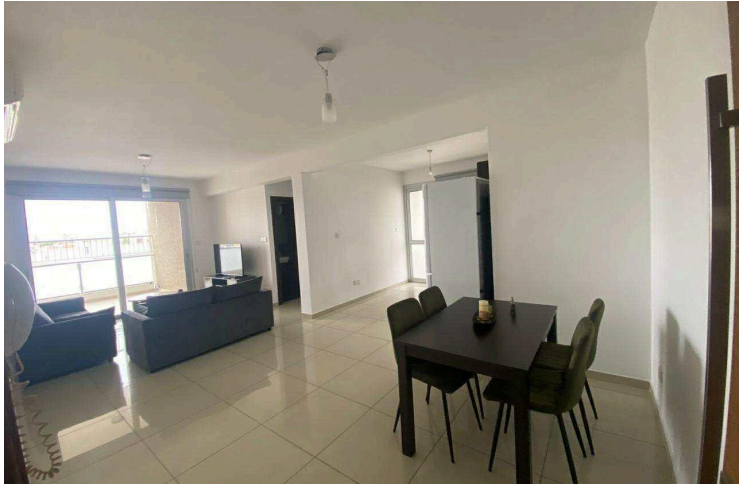
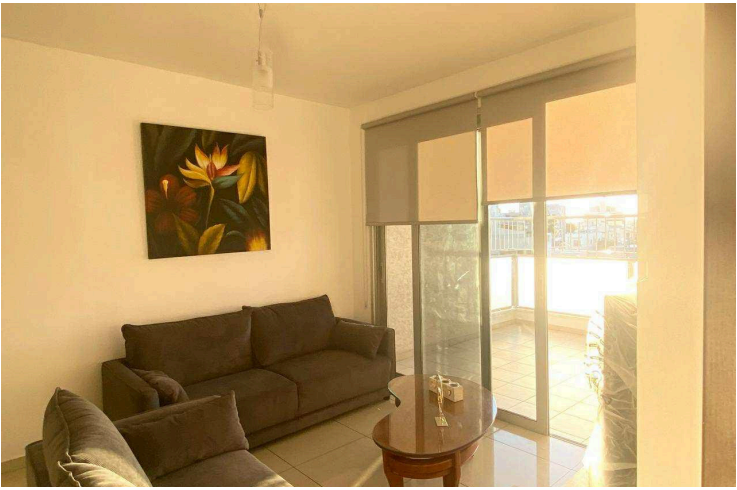
64184688

MODERN FULLY FURNISHED TWO BEDROOM APARTMENT CLOSE TO NEW PORT IN LIMASSOL

 Tsiflikoudia Limassol, Limassol

€1,500 /month





Overview

Specifications

Bedrooms


 2

Bathrooms

 1

Covered

 85 m²

| | | | |
|-----------------|-------------------|--------------------------|---|
| Type | Apartment | Status | Used |
| Toilets | 2 | Furnished | Fully furnished |
| Covered veranda | 12 m ² | Energy efficiency rating |  A |

Description

This bright and comfortable apartment is located in a quiet residential area of **Tsiflikoudia**, just **5 minutes** by car from Limassol Marina, Limassol Mall, and very close to the **New Port**—an ideal spot for convenient access to all major city destinations.

Situated on the **3rd floor** of a small residential building, the apartment features:

- 2 comfortable bedrooms**
- 1 bathroom + guest toilet (2 toilets total)**
- 2 spacious verandas**, one of which includes a **BBQ area**
- Covered parking space**
- Private storage room** on the ground floor

The apartment comes **fully furnished** and is perfect for tenants seeking comfort, practicality, and quick access to key Limassol locations.



Additional information

Features

| | | |
|--------------------------------|----------------------------------|---------------------------|
| Balcony | Balcony, back | Balcony, front |
| Barbeque | Bath | Bicycle parking |
| City view | Combined kitchen and dining area | Door screen |
| Double glazing | Easy access to highway | Easy access to main roads |
| Energy efficient doors/windows | Fitted wardrobes | Floor-to-ceiling windows |
| Guest WC | Kitchen appliances | Near amenities |
| Near bus route | Open plan | Painted |
| Quiet area | Sound insulation | Spacious rooms |
| Suitable for work | Thermal insulation | Veranda |

Contact us



Tatiana Kirshanova

 (+357) 96071790

 tatianak@vivorealty.com.cy

