

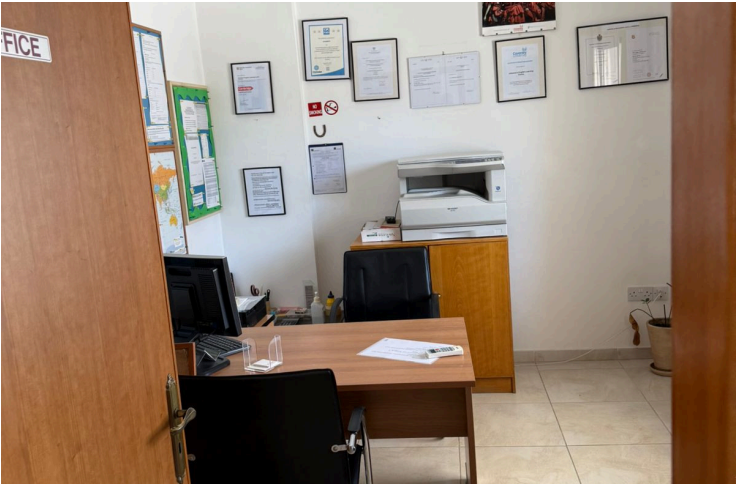
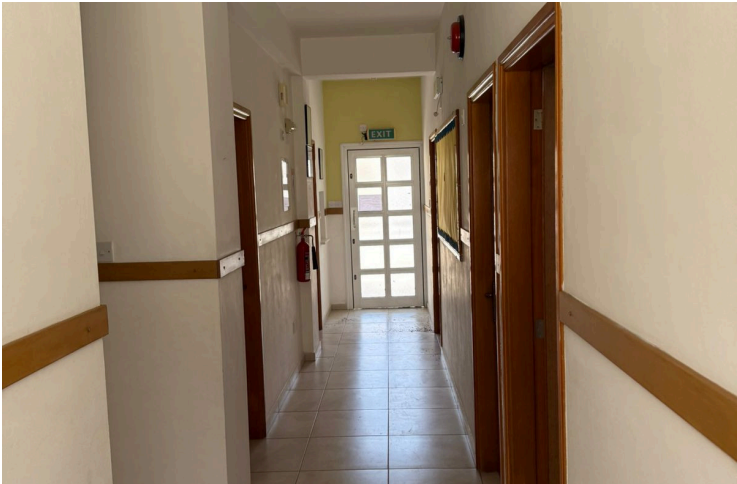
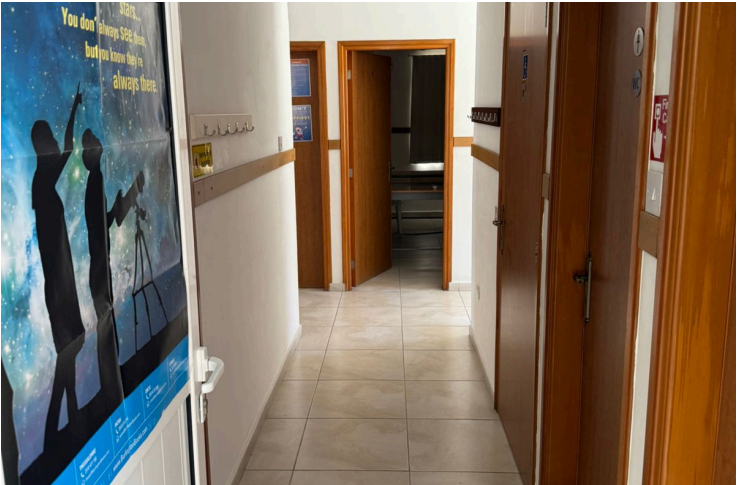
64183246

SPACIOUS OFFICE SPACE OF 240 SQ.M. IN AG. FYLA

 Agia Fyla, Limassol

€4,000 /month






Overview

Specifications

Covered

 **240 m²**

Type	Office
Toilets	4
Status	Key ready

Year of construction	2005
Energy efficiency rating	 Exempt

Description

A large and versatile office space of 240 sqm is now available for rent in one of Limassol's most sought-after locations, directly on the main road of Agia Fyla. Strategically positioned just above the Agia Fyla roundabout, this property is only 1,000 meters from the Mediterranean Hospital, making it an excellent choice for medical or professional services.

? Property Highlights:

- * **Total covered area:** 240 sqm
- * **8 spacious, private offices**
- * **4 modern toilets**, including **1** with full accessibility for individuals with mobility issues
- * **Fully equipped kitchen**
- * **Dedicated storage room**
- * **Disability access ramp**
- * **4 private parking spaces**

This ground floor unit is ideal for a multi-purpose medical centre, clinic, physiotherapy practice, wellness centre, or any other professional service requiring high visibility, easy access, and proximity to key amenities.

? Location Benefits:

- * Prime main road exposure for visibility and branding
- * High-traffic area with excellent accessibility
- * Close to residential areas, schools, and hospital



Additional information

Facilities

Aircondition, Split system

Parking, Uncovered

Solar water heater

Features

City view

Closed offices

Entrance gate

Kitchen

Near bus route


Near public transport

Spacious rooms

Contact us



Tatiana Kirshanova

 (+357) 96071790

 tatianak@vivorealty.com.cy

