

64182261

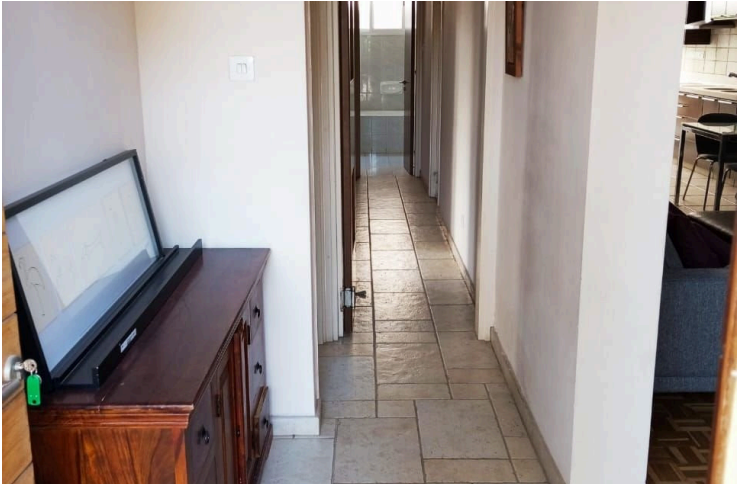
# COZY THREE BEDROOM GROUND FLOOR HOUSE

 Petrou & Pavlou, Limassol

**€1,700** /month







# Overview

## Specifications

Bedrooms

 3

Bathrooms

 1

Covered

 120 m<sup>2</sup>

Type

**Semi-Detached Villa**

Toilets

**1**

Status

**Key ready**

Furnished

**Fully furnished**

Energy efficiency rating

 **B+**

## Description

This beautiful ground floor residence is located in the residential area of Petrou & Pavlou (Nafi), right in the heart of Limassol. Enjoy the convenience of being close to all essential amenities including supermarkets, bakeries, banks, schools, bus stations, the ERA Apollon shopping center, and more.

The property is part of a small residential building and features a spacious living and dining area with a cozy fireplace. The open-plan, fully equipped kitchen opens onto a private back veranda—perfect for relaxing or entertaining.

There are three comfortable bedrooms and a family bathroom. Additional features include air conditioning units in all rooms, a private landscaped garden, and private parking for two vehicles.



# Additional information

## Facilities

Aircondition, Split system

Landscaped garden

Parking, Uncovered

Solar water heater

## Features

Bath

City view

Combined kitchen and dining area

Corner

Courtyard

Easy access to main roads

Entrance gate

Fitted wardrobes

Floor-to-ceiling windows

Garden

Ground floor bedroom

Heart of city center

Indoor fireplace

Kitchen appliances

Near amenities

Near bus route

Open plan

Openings in opposite sides

Quiet area

Sound insulation

Spacious rooms

Thermal insulation


Veranda

Wooden flooring

## Contact us



**Tatiana Kirshanova**

 (+357) 96071790

 [tatianak@vivorealty.com.cy](mailto:tatianak@vivorealty.com.cy)

