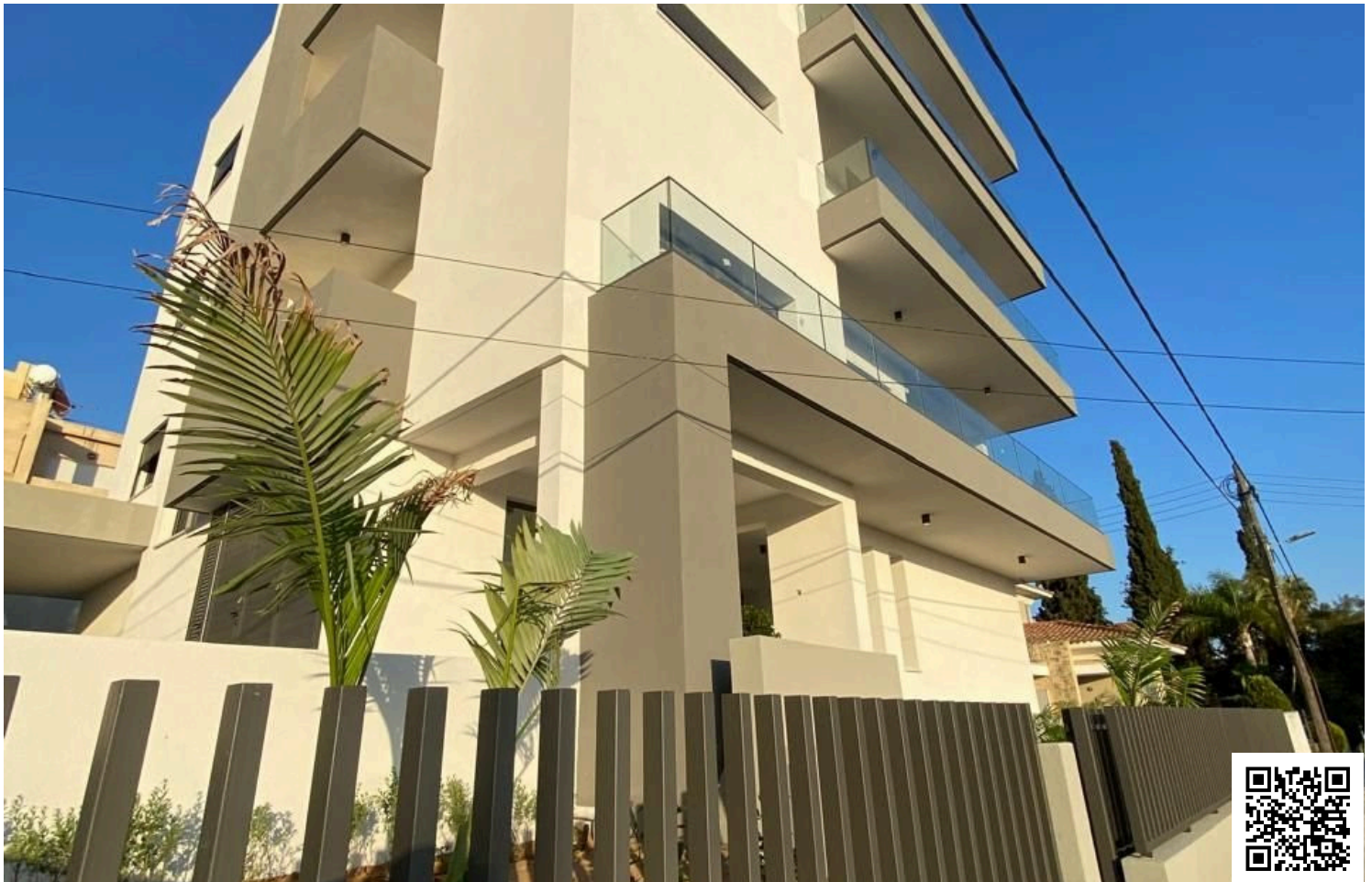


64182220

# BRAND NEW THREE BEDROOM WHOLE- FLOOR APARTMENT + STUDIO IN PANTHEA

 Panthea, Limassol

**€3,100** /month







# Overview

## Specifications


Bedrooms

 3

Covered

 150 m<sup>2</sup>

Type	Apartment
Showers	3
Toilets	3
Status	Key ready

Year of construction	2025
Furnished	Unfurnished
Energy efficiency rating	 A+

## Description

**\*\*Be the First to Live in This Stunning New Apartment with Panoramic Views\*\***

Experience luxurious living in this brand-new, spacious 3-bedroom apartment, part of an exclusive building with only **\*\*three units\*\***—offering unmatched privacy and tranquility. Nestled in a **\*\*quiet, safe residential neighborhood\*\***, this home boasts **\*\*breathtaking views of both the sea and surrounding mountains\*\***.

**\*\*Key Features:\*\***

- \* Just **\*\*3 apartments\*\*** in the building – enjoy peace, quiet, and privacy
- \* **\*\*Expansive sea and mountain views\*\*** from the comfort of your home
- \* Located near **\*\*Grammar School\*\*** and **\*\*Foyle's\*\*** – ideal for families
- \* **\*\*Quiet and secure\*\*** area with a strong sense of community
- \* Includes **\*\*2 private parking spaces\*\***
- \* **\*\*Extra ground-floor studio\*\*** – perfect for a home office or guest suite.
- \* **\*\*Fully furnished option\*\*** tailored to your needs \*(minimal rent increase if desired)\*

Whether you're a professional, a couple, or a family, this home offers the perfect balance of **\*\*comfort, convenience, and serenity\*\***.

**\*\*Make this your new home – book a viewing today!\*\***



# Additional information

## Facilities

Aircondition, Split system

Parking, Covered

Elevator

Solar water heater

Maid's room

Storage

## Features

Balcony

Combined kitchen and dining area

Easy access to highway

Energy efficient doors/windows

Floor-to-ceiling windows

Guestroom

Kitchen island

Mountain view

Open plan

Pressurized water system

Shutters, electric

Bright

Door screen

Easy access to main roads

Entrance gate, automated

Guest WC

Internet

Laundry room

Near amenities

Panoramic view

Quiet area

Thermal insulation

City view

Double glazing

En suite shower

Fitted wardrobes

Guest cloakroom

Kitchen appliances

Modern design

Near bus route


Pipe-in-pipe plumbing system

Sea view

## Contact us



**Tatiana Kirshanova**

 (+357) 96071790

 [tatianak@vivorealty.com.cy](mailto:tatianak@vivorealty.com.cy)

