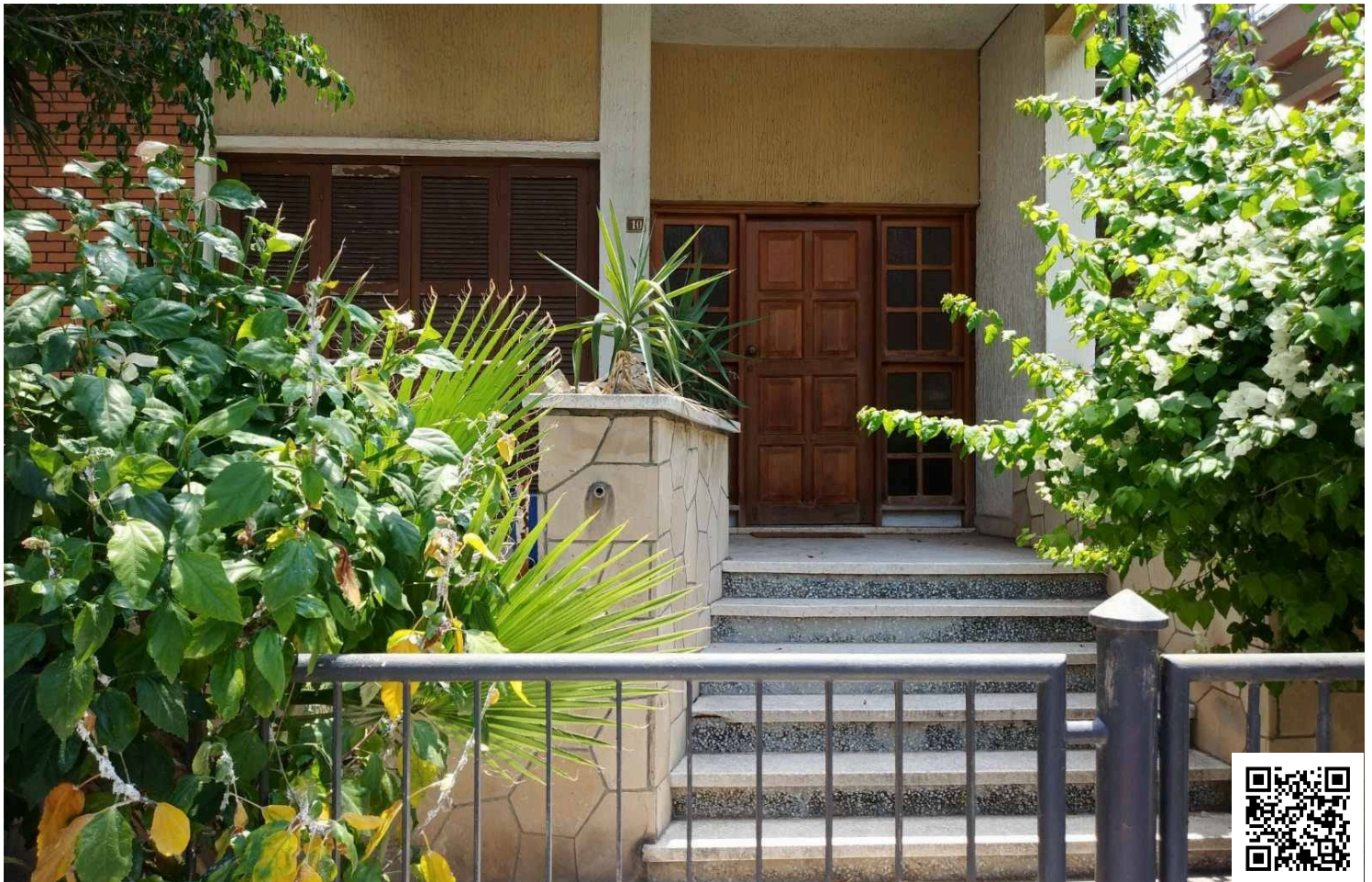


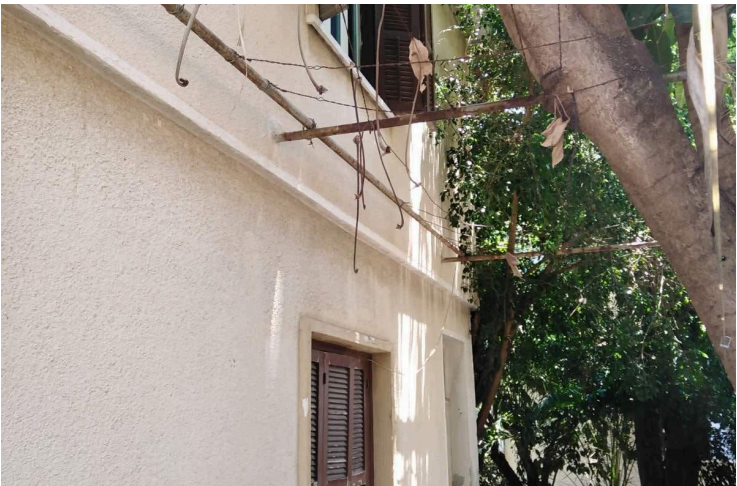
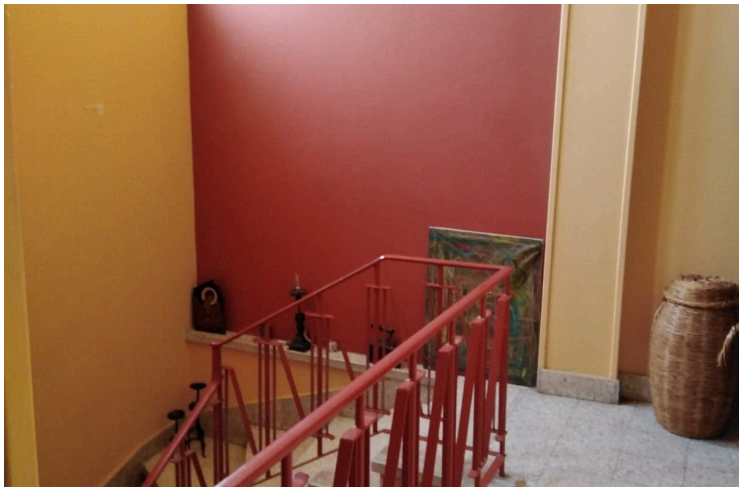
64182052

For Sale Building Plot 265 m2 in Katholiki

 Katholiki, Limassol

€440,000





Overview

Specifications

Area

 265 m²

Type

Building Plot

Title deed

Share of land

Description

For Sale: A prime building plot of 265 m² located in the sought-after area of Katholiki, Limassol. This plot offers a fantastic opportunity to build your dream home or an investment property. With a density of 140% and a coverage 50%, you have the potential to construct up to four floors. The existing semi-detached house of 130 m² on the property can either be demolished or renovated to suit your needs. Situated in a residential area, it's close to all city amenities and offers easy access to the main roads. A great opportunity in a thriving location!

Partially exchange accepted.



Additional information

Features

City view	Connected to electric mains	Easy access to highway
Easy access to main roads	Heart of city center	Investment opportunity
Municipal water/sewage	Near amenities	Near bus route
Prime land	Quiet area	


Planning zones

Zone	Cover factor	Build factor	Max height	Max floors	Affected percentage
Ka3	50%	1.4%	17 m	4	-

Contact us



Tatiana Kirshanova

 (+357) 96071790

 tatianak@vivorealty.com.cy

