



VIVO
REALTY

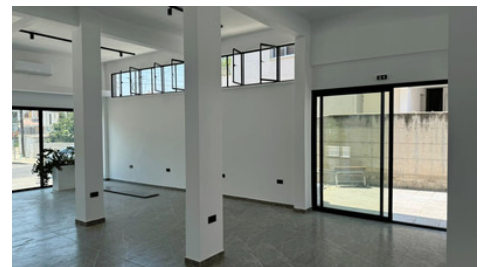
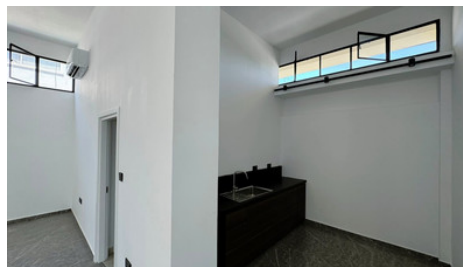


OFFICE/SHOP SPACE OF 180SQ.M. IN LIMASSOL CENTER

 Limassol, Petrou & Pavlou

64181490





Rent	€5,000 /month	Type	Office
Covered	180 m ²	Uncovered veranda	40 m ²
Status	Key ready	Energy efficiency rating	A
Area	Limassol, Petrou & Pavlou		

Description

Commercial office space of 180 sq.m. for rent located in Petrou and Pavlou Limassol close to all amenities with easy access to the main road and Limassol business centre.

Total Area of 180 m2, open plan space, 2 toilets, kitchenette, partitions.

-A/C units in all areas

-5 private parking spaces.

Available for long term rent.



Tatiana Kirshanova

Property Consultant

✉ tatianak@vivorealty.com.cy

☎ (+357) 96071790

Facilities

Parking, Uncovered

Features

Energy efficient doors/windows

Easy access to main roads

Kitchenette

Excellent condition

Double glazing

Near bus route

Heart of city center

Business facilities

Alarm system, Provision

Granite flooring

Near public transport

Near amenities