



VIVO
REALTY

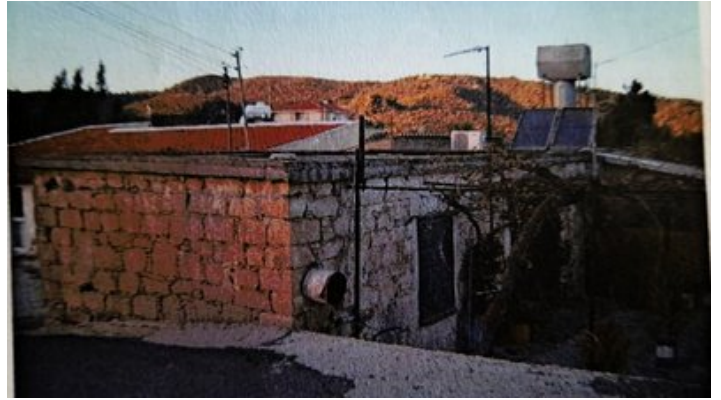


RESIDENTIAL LAND WITH OLD TRADITIONALHOUSE IN VASA KELLAKIOU LIMASSOL

 [Limassol, Vasa Kellakiou](#)

64181214





Price	€95,000 €120,000	Type	Development Land
Plot	967 m ²	Title deed	Yes
Area	Limassol, Vasa Kellakiou		

Description

Residential land of 967sq m. located in the center of Vasa Kellakiou village of Limassol, just 25-30 minute drive from Limassol town.

Surrounded by houses and lots of greenery and with a building density of 90%, you can build your private villa in a laidback peaceful area with natural surroundings.

Currently there is an old traditional stone built two bedroom house in the land which can be renovated.



Tatiana Kirshanova

Property Consultant

✉ tatianak@vivorealty.com.cy

☎ (+357) 96071790

Features

Easy access to main roads

Own water supply

Municipal water/sewage

Village view

Easy access to highway

Connected to electric mains

Quiet Area

Near amenities

Zones

Zone	Cover factor	Build factor	Max height	Max floors	Affected percentage
H2	50%	90%	8.3 m	2	