

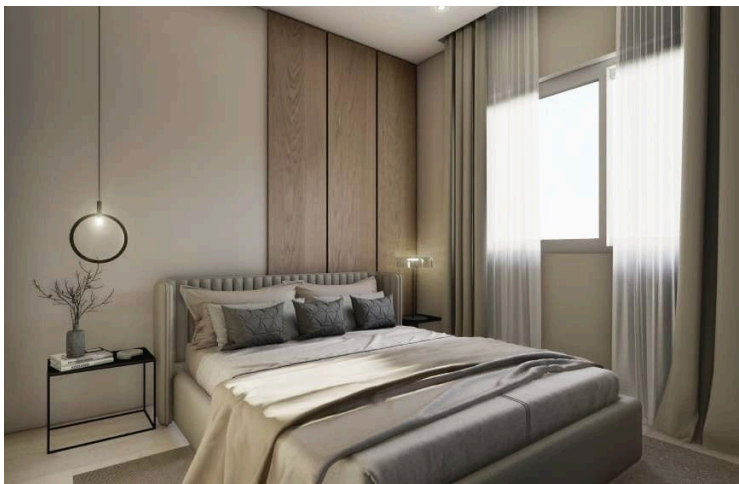
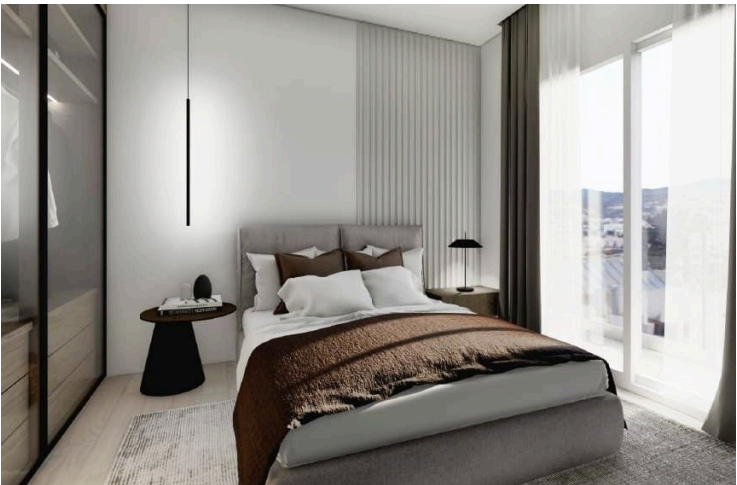
64180595

TWO BEDROOM PENTHOUSE WITH ROOF GARDEN IN YPSONAS

 Ypsonas, Limassol

€330,000 +VAT





Overview

Specifications

Bedrooms

 2


Bathrooms

 1

Covered

 85.2 m²

Type	Apartment
Showers	1
Toilets	2
Status	Under construction

Year of construction	2024
Furnished	Unfurnished
Energy efficiency rating	 A

Description

This stunning two-bedroom smart penthouse in Ypsonas, Limassol, combines luxury, style, and practicality. Perfectly situated with easy access to the highway, and just few minutes drive away from schools, supermarkets, and the beautiful beaches of Limassol, this apartment offers the ultimate modern living experience.

The building is designed with exclusivity in mind, featuring just six apartments spread across three floors. Inside, the penthouse offers a bright and airy sitting and dining area that opens up onto a large covered veranda—ideal for enjoying outdoor meals or simply relaxing. The spacious kitchen includes a breakfast bench, perfect for casual dining or entertaining guests. One of the standout features is the roof garden, offering open views of the city of Limassol—an exceptional space for unwinding and enjoying panoramic vistas.

Both bedrooms are generously sized, with the master bedroom benefiting from an en-suite bathroom. A separate family bathroom is available for the second bedroom, adding convenience and functionality.

The apartment is equipped with top-of-the-line, energy-efficient features such as underfloor water heating with a heat pump, photovoltaic panels for sustainable energy, smart switches, electric shutters, and thermal aluminum and glass with 8 cm thermal insulation. A water pressure pump ensures optimal water flow throughout the home.

Additional benefits include provisions for air conditioning, two covered parking spaces, and extra storage. What truly makes this property special is that the buyer can select their own internal finishes, allowing them to create a personalized and unique living space.

This penthouse is an exceptional choice for those seeking a modern, energy-efficient, and stylish home in a prime location.

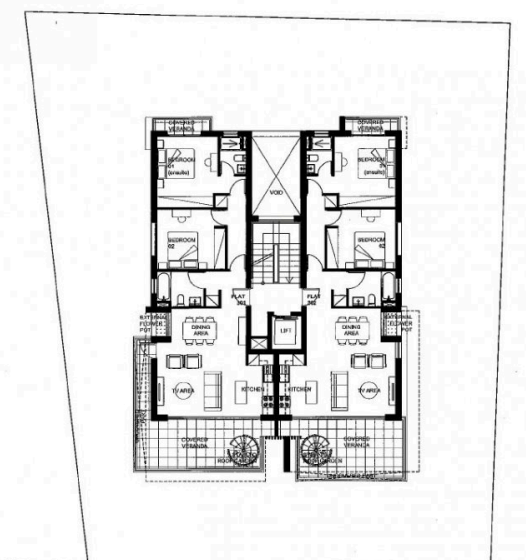


Floor plans

3RD FLOOR



3RD FLOOR



Flat	Floor	Bedrooms	Internal covered area	Covered veranda	Uncovered veranda	Roof Garden	Parking / store room	Total area
301	3	2	85.2m²	19.95m²	4.70m²	37.90m²	2/1	147.75m²
302	3	2	85.2m²	18.50m²	2.95m²	38.55m²	2/1	145.20m²

11



Additional information

Facilities

Aircondition, Provision

Parking, Covered

Storage

Elevator

Solar photovoltaic panels
(provision)

Heating, Provision

Solar water heater

Features

Alarm system (provision)

Bright

Door screen

Easy access to main roads

Internet

Luxury specifications

Near amenities

Pressurized water system

Roof garden

Sound insulation

Balcony

Central satellite system

Double glazing

Fitted wardrobes

Investment opportunity

Modern design

Near bus route

Quiet area

Shower

Spacious rooms

Bath

Combined kitchen and dining area

Easy access to highway

Guest cloakroom

Laminate flooring

Municipal water/sewage

Open plan

Rental potential

Shutters, electric

Thermal insulation

Contact us



Tatiana Kirshanova

 (+357) 96071790

 tatianak@vivorealty.com.cy

